

IDAHO

CONTACT THE STAFF

COORDINATOR:

Jeff Kingsbury
Email: kingsbuj@dhw.idaho.gov
Phone: 208-334-5967
Fax: 208-334-4914

ADDRESS:

Idaho Department of Health and Welfare
Immunization Program
PO Box 83720
Boise, ID 83720-0036

SCREENING REQUIREMENTS

Does the jurisdiction require screening of pregnant women for hepatitis B infection or hepatitis B surface antigen (HBsAg)?

No

Does the jurisdiction specifically require reporting of positive HBsAg status in pregnant women?

No

COMPLETION OF HEPATITIS B VACCINATION SERIES

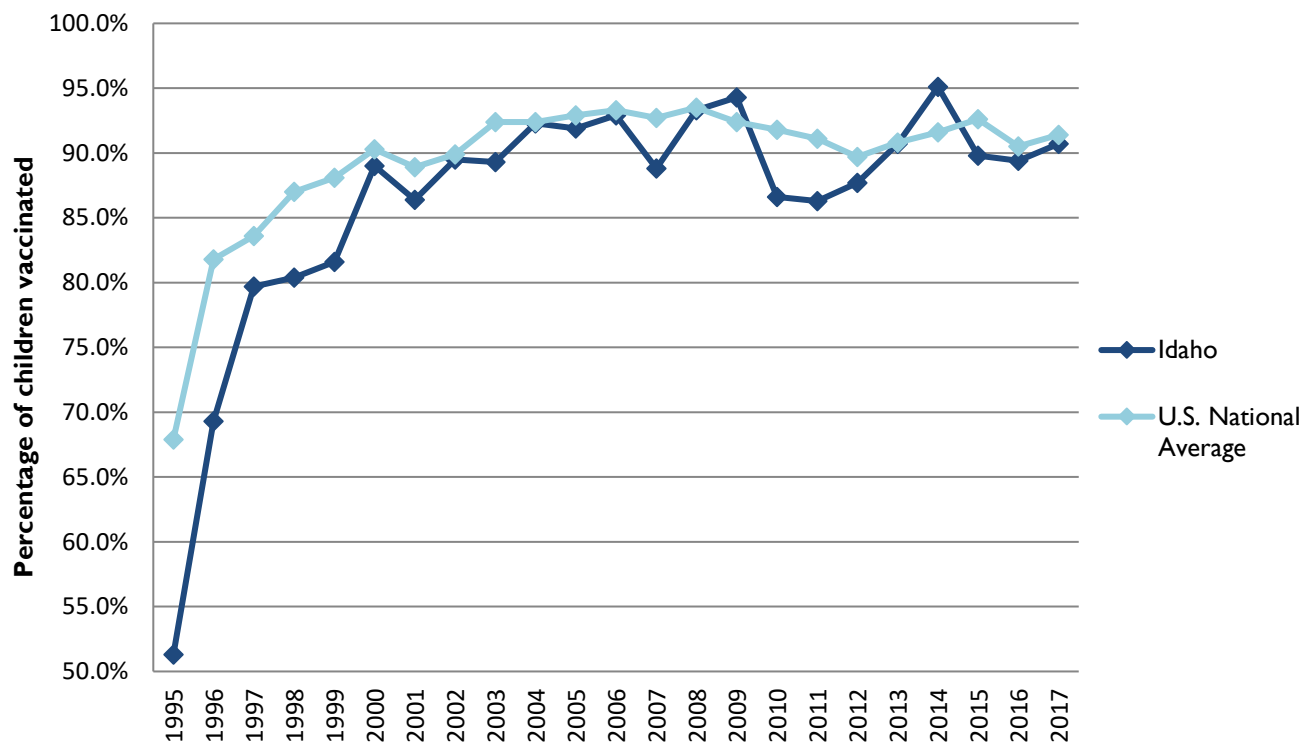
3 or more doses among children 19-35 months of age

	Percentage of children 19-35 months of age receiving 3 or more doses	Rank among other states	U.S. National Average	#1 ranked state and coverage
1995	51.3 ± 7.1%	43	67.9 ± 1.3%	88.5 ± 5.4% (South Carolina)
1996	69.3 ± 5.6%	48	81.8 ± 0.9%	95.8 ± 2.2% (South Carolina)
1997	79.7 ± 4.6%	45	83.6 ± 0.8%	91.6 ± 4.2% (New Jersey)
1998	80.4 ± 4.6%	49	87.0 ± 0.7%	94.1 ± 2.7% (South Carolina)
1999	81.6 ± 4.7%	49	88.1 ± 0.7%	94.0 ± 3.1% (Rhode Island)
2000	89.0 ± 3.6%	35	90.3 ± 0.6%	96.4 ± 1.9% (Rhode Island)
2001	86.4 ± 3.9%	39	88.9 ± 0.7%	95.8 ± 2.2% (Rhode Island)
2002	89.5 ± 4.0%	35	89.9 ± 0.7%	97.0 ± 2.0% (Rhode Island)
2003	89.3 ± 4.3%	45	92.4 ± 0.6%	98.2 ± 1.4% (Connecticut)
2004	92.3 ± 3.7%	30	92.4 ± 0.6%	96.8 ± 1.7% (Florida)
2005	91.9 ± 3.8%	30	92.9 ± 0.6%	97.9 ± 2.0% (Massachusetts)
2006	92.9 ± 3.5%	31	93.3 ± 0.6%	97.8 ± 1.6% (Rhode Island)
2007	88.8 ± 4.7%	46	92.7 ± 0.7%	98.6 ± 1.5% (New Hampshire)
2008	93.3 ± 3.4%	27	93.5 ± 0.7%	98.1 ± 1.6% (Connecticut)
2009	94.3 ± 3.6%	18	92.4 ± 0.7%	98.8 ± 1.5% (Rhode Island)
2010	86.8 ± 4.9%	49	91.8 ± 1.5%	98.3 ± 1.5% (North Dakota)
2011	86.3 ± 5.4%	47	91.1 ± 0.7%	97.1 ± 1.7% (Louisiana)
2012	87.7 ± 5.0%	43	89.7 ± 0.9%	96.3 ± 3.0% (Georgia)
2013	90.7 ± 4.3%	29	90.8 ± 1.0%	96.7 ± 2.3% (Rhode Island)
2014	95.1 ± 3.1%	8	91.6 ± 0.9%	97.6 ± 1.8% (Louisiana)
2015	89.8 ± 4.6%	47	92.6 ± 0.7%	97.3 ± 2.3% (Connecticut)
2016	89.4 ± 4.7%	39	90.5 ± 1.1%	97.4 ± 1.9% (Iowa)
2017	90.7 ± 4.7%	32	91.4 ± 0.9%	97.7 ± 1.6% (North Dakota)

Data compiled by the ALC from National Immunization Surveys, 1995-2017¹, <https://www.cdc.gov/vaccines/imz-managers/coverage/childvaxview/data-reports/hepb/index.html>

GRAPH:

Percentage of Children 19-35 Months of Age Receiving 3 or More Doses of Hepatitis B Vaccine



Data compiled by the ALC from National Immunization Surveys, 1995-2017¹,
<https://www.cdc.gov/vaccines/imz-managers/coverage/childvaxview/data-reports/hepb/index.html>

HEPATITIS B BIRTH DOSE VACCINATION COVERAGE

1 or more dose among infants within 3 days of birth

	Percentage of infants receiving			Rank among other states according to		
	1 dose within 1 day of birth*	1 dose within 2 days of birth	1 dose within 3 days of birth*	1 dose within 1 day of birth	1 dose within 2 days of birth	1 dose within 3 days of birth
2003		61.9 ± 6.9%		N/A	11	N/A
2004		59.3 ± 6.6%		N/A	23	N/A
2005		51.0 ± 7.0%		N/A	29	N/A
2006	42.3 ± 7.2%	47.5 ± 7.3%	48.6 ± 7.3%	31	35	36
2007	56.4 ± 7.8%	60.8 ± 7.7%	61.7 ± 7.6%	18	25	27
2008	59.8 ± 6.7%	63.5 ± 6.6%	64.0 ± 6.6%	15	22	26
2009	65.7 ± 7.3%	69.6 ± 7.1%	70.3 ± 7.1%	10	12	12
2010	62.3 ± 6.5%	64.2 ± 6.4%	65.2 ± 6.4%	17	29	31
2011	67.5 ± 7.7%	70.0 ± 7.5%	70.2 ± 7.5%	19	25	31
2012	68.3 ± 7.9%	70.0 ± 7.8%	70.1 ± 7.8%	18	29	35
2013	68.2 ± 6.8%	72.3 ± 6.6%	72.7 ± 6.5%	22	30	36
2014	71.8 ± 7.7%	74.5 ± 7.5%	75.4 ± 7.4%	19	26	26
2015	66.4 ± 7.1%	68.6 ± 7.0%	69.8 ± 6.9%	25	35	36
2016	63.8 ± 8.0%	68.1 ± 7.7%	68.3 ± 7.7%	27	36	40
2017	73.6 ± 7.1%	74.7 ± 7%	75.6 ± 6.9%	13	22	26

*No data available 2003-2005

2017 U.S. NATIONAL AVERAGE

Day 1: 65.7 ± 1.6%
Day 2: 72.0 ± 1.6%
Day 3: 73.6 ± 1.6%

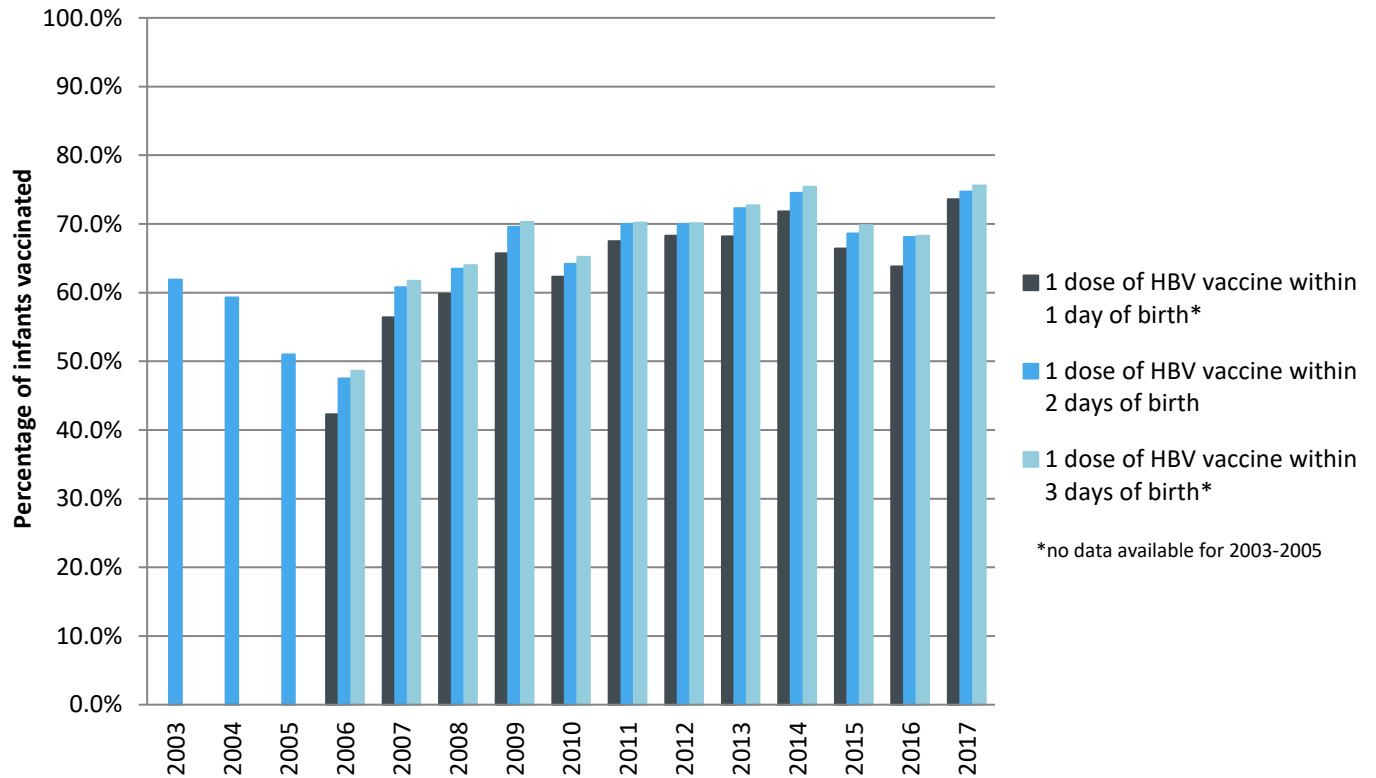
2017 HIGHEST BIRTH DOSE COVERAGE

Day 1: 82.0 ± 5.7% (Kentucky)
Day 2: 84.1 ± 5.6% (Kentucky)
Day 3: 84.1 ± 5.6% (Kentucky)

Data compiled by the ALC from National Immunization Surveys, 1995-2017¹,
<https://www.cdc.gov/vaccines/imz-managers/coverage/childvaxview/data-reports/hepb/index.html>

GRAPH:

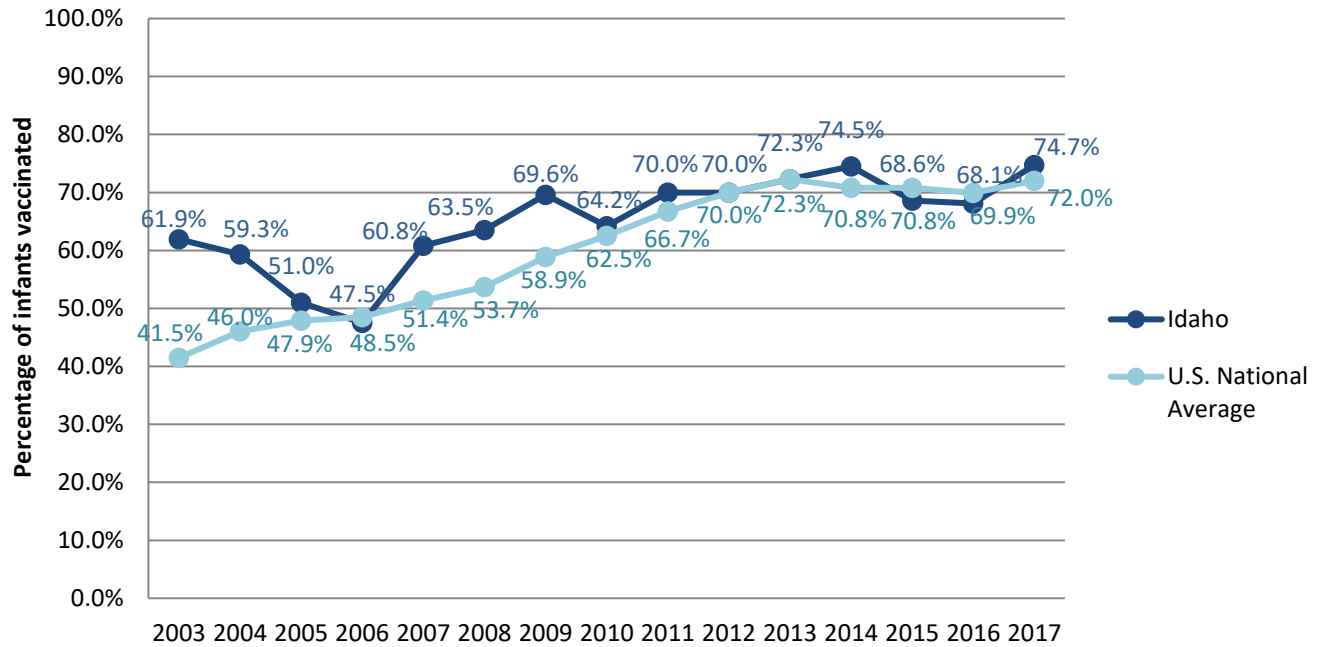
Estimated Vaccination Coverage for Hepatitis B Vaccine among Children from Birth to 3 Days of Age in Idaho



Data compiled by the ALC from National Immunization Surveys, 1995-2017¹,
<https://www.cdc.gov/vaccines/imz-managers/coverage/childvaxview/data-reports/hepb/index.html>

GRAPH:

Percentage of Infants Receiving 1 Dose of Hepatitis B Vaccine within 2 Days of Birth



Data compiled by the ALC from National Immunization Surveys, 1995-2017¹,
<https://www.cdc.gov/vaccines/imz-managers/coverage/childvaxview/data-reports/hepb/index.html>

¹ The data from the National Immunization Surveys constitute a composite of data from children who were 19-35 months of age at the time of the survey. Therefore, the data might reflect a different estimate from the states' own birth cohort data.