

CALIFORNIA

CONTACT THE STAFF

PERINATAL HEPATITIS B DATA COORDINATOR:

Rosie Glenn-Finer
Email: Rosie.glenn-finer@cdph.ca.gov
Phone: 510-620-3741
Fax: 510-620-3949

ADDRESS:

CDPH Immunization Branch
850 Marina Bay Pkwy
Building P, 2nd Floor
Richmond, CA, 94804-6403

VPD EPIDEMIOLOGIST:

Jennifer Zipprich
Email: Jennifer.Zipprich@cdph.ca.gov
Phone: 510-620-3848

SCREENING REQUIREMENTS

Does the jurisdiction require screening of pregnant women for hepatitis B infection or hepatitis B surface antigen (HBsAg)?

Yes - Cal. Health & Safety Code § 125080 and Cal. Health & Safety Code § 125085

Does the jurisdiction specifically require reporting of positive HBsAg status in pregnant women?

Yes - Cal. Health & Safety Code § 125085

COMPLETION OF HEPATITIS B VACCINATION SERIES

3 or more doses among children 19-35 months of age

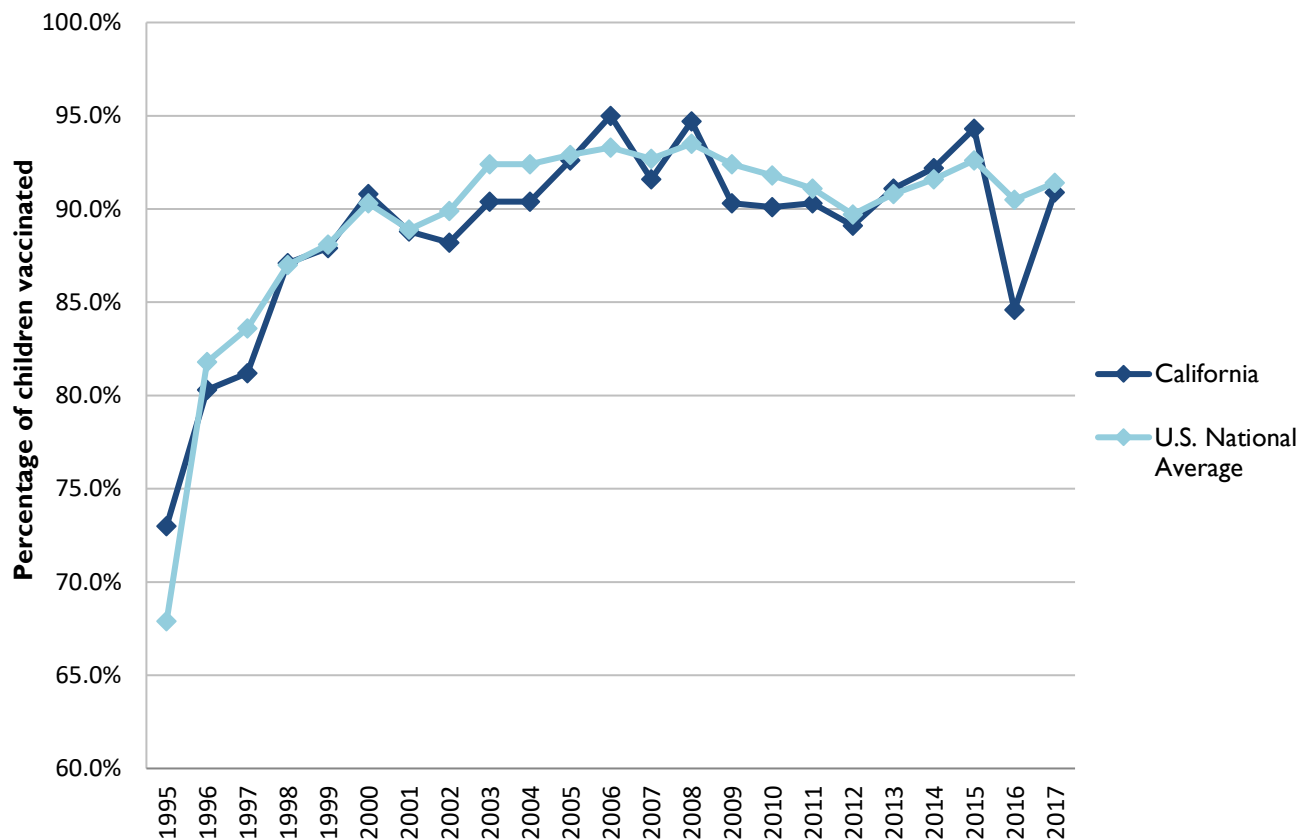
	Percentage of children 19-35 months of age receiving 3 or more doses	Rank among other states	U.S. National Average	#1 ranked state and coverage
1995	73.0 ± 5.2%	14	67.9 ± 1.3%	88.5 ± 5.4% (South Carolina)
1996	80.3 ± 3.5%	29	81.8 ± 0.9%	95.8 ± 2.2% (South Carolina)
1997	81.2 ± 3.4%	40	83.6 ± 0.8%	91.6 ± 4.2% (New Jersey)
1998	87.1 ± 2.9%	26	87.0 ± 0.7%	94.1 ± 2.7% (South Carolina)
1999	87.9 ± 2.8%	30	88.1 ± 0.7%	94.0 ± 3.1% (Rhode Island)
2000	90.8 ± 2.3%	23	90.3 ± 0.6%	96.4 ± 1.9% (Rhode Island)
2001	88.8 ± 2.8%	28	88.9 ± 0.7%	95.8 ± 2.2% (Rhode Island)
2002	88.2 ± 3.0%	40	89.9 ± 0.7%	97.0 ± 2.0% (Rhode Island)
2003	90.4 ± 2.8%	35	92.4 ± 0.6%	98.2 ± 1.4% (Connecticut)
2004	90.4 ± 2.6%	41	92.4 ± 0.6%	96.8 ± 1.7% (Florida)
2005	92.6 ± 2.3%	27	92.9 ± 0.6%	97.9 ± 2.0% (Massachusetts)
2006	95.0 ± 1.7%	16	93.3 ± 0.6%	97.8 ± 1.6% (Rhode Island)
2007	91.6 ± 3.2%	41	92.7 ± 0.7%	98.6 ± 1.5% (New Hampshire)
2008	94.7 ± 2.5%	15	93.5 ± 0.7%	98.1 ± 1.6% (Connecticut)
2009	90.3 ± 3.7%	36	92.4 ± 0.7%	98.8 ± 1.5% (Rhode Island)
2010	90.1 ± 3.8%	39	91.8 ± 1.5%	98.3 ± 1.5% (North Dakota)
2011	90.3 ± 3.2%	34	91.1 ± 0.7%	97.1 ± 1.7% (Louisiana)
2012	89.1 ± 4.2%	33	89.7 ± 0.9%	96.3 ± 3.0% (Georgia)
2013	91.1 ± 5.2%	24	90.8 ± 1.0%	96.7 ± 2.3% (Rhode Island)
2014	92.2 ± 4.1%	26	91.6 ± 0.9%	97.6 ± 1.8% (Louisiana)
2015	94.3 ± 3.4%	13	92.6 ± 0.7%	97.3 ± 2.3% (Connecticut)
2016	84.6 ± 6.6%	51	90.5 ± 1.1%	97.4 ± 1.9% (Iowa)
2017	90.9 ± 5.3%	31	91.4 ± 0.9%	97.7 ± 1.6% (North Dakota)

Data compiled by the ALC from National Immunization Surveys, 1995-2017¹,

<https://www.cdc.gov/vaccines/imz-managers/coverage/childvaxview/data-reports/hepb/index.html>

GRAPH:

Percentage of Children 19-35 Months of Age Receiving 3 or More Doses of Hepatitis B Vaccine



Data compiled by the ALC from National Immunization Surveys, 1995-2017¹,
<https://www.cdc.gov/vaccines/imz-managers/coverage/childvaxview/data-reports/hepb/index.html>

HEPATITIS B BIRTH DOSE VACCINATION COVERAGE

1 or more dose among infants within 3 days of birth

	Percentage of infants receiving			Rank among other states according to		
	1 dose within 1 day of birth*	1 dose within 2 days of birth	1 dose within 3 days of birth*	1 dose within 1 day of birth	1 dose within 2 days of birth	1 dose within 3 days of birth
2003		20.3 ± 3.4%		N/A	47	N/A
2004		22.3 ± 3.6%		N/A	46	N/A
2005		29.4 ± 4.7%		N/A	44	N/A
2006	29.0 ± 4.3%	30.9 ± 4.4%	31.3 ± 4.4%	40	42	44
2007	30.3 ± 5.9%	33.6 ± 6.0%	34.8 ± 6.0%	40	42	43
2008	32.1 ± 4.8%	34.9 ± 4.9%	36.3 ± 5.0%	43	45	45
2009	43.2 ± 6.3%	46.9 ± 6.3%	49.8 ± 6.3%	42	44	41
2010	47.8 ± 6.8%	52.2 ± 6.7%	53.0 ± 6.7%	38	45	45
2011	52.4 ± 6.5%	56.5 ± 6.4%	58.4 ± 6.3%	40	46	45
2012	55.8 ± 7.6%	60.4 ± 7.5%	61.5 ± 7.5%	40	47	47
2013	60.9 ± 8.2%	68.2 ± 7.9%	70.3 ± 7.7%	35	37	38
2014	52.5 ± 8.4%	60.0 ± 8.3%	63.9 ± 8.1%	42	44	43
2015	56.4 ± 8.1%	67.9 ± 8.3%	69.1 ± 7.4%	42	34	37
2016	52.7 ± 9.3%	59.2 ± 9.3%	60.1 ± 9.4%	46	48	48
2017	55.6 ± 9.4%	62.8 ± 9.6%	66.1 ± 9.4%	45	47	45

*No data available 2003-2005

2017 U.S. NATIONAL AVERAGE

Day 1: 65.7 ± 1.6%
Day 2: 72.0 ± 1.6%
Day 3: 73.6 ± 1.6%

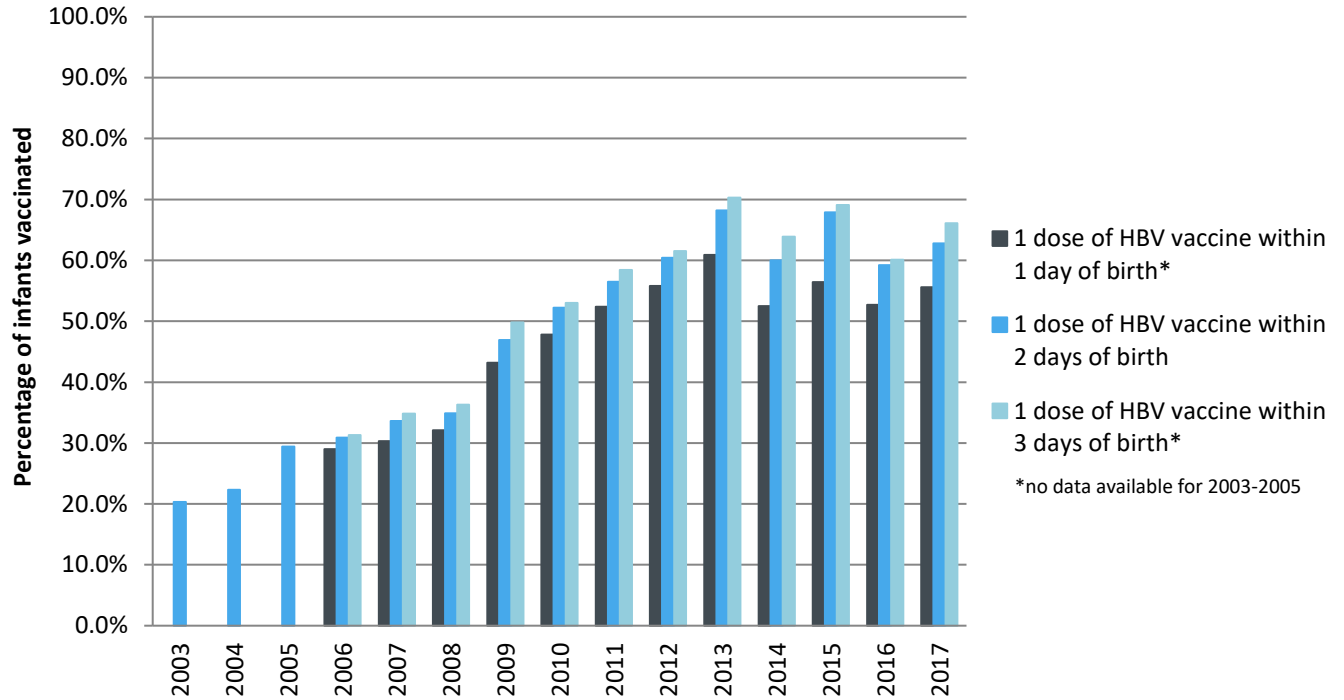
2017 HIGHEST BIRTH DOSE COVERAGE

Day 1: 82.0 ± 5.7% (Kentucky)
Day 2: 84.1 ± 5.6% (Kentucky)
Day 3: 84.1 ± 5.6% (Kentucky)

Data compiled by the ALC from National Immunization Surveys, 1995-2017¹,
<https://www.cdc.gov/vaccines/imz-managers/coverage/childvaxview/data-reports/hepb/index.html>

GRAPH:

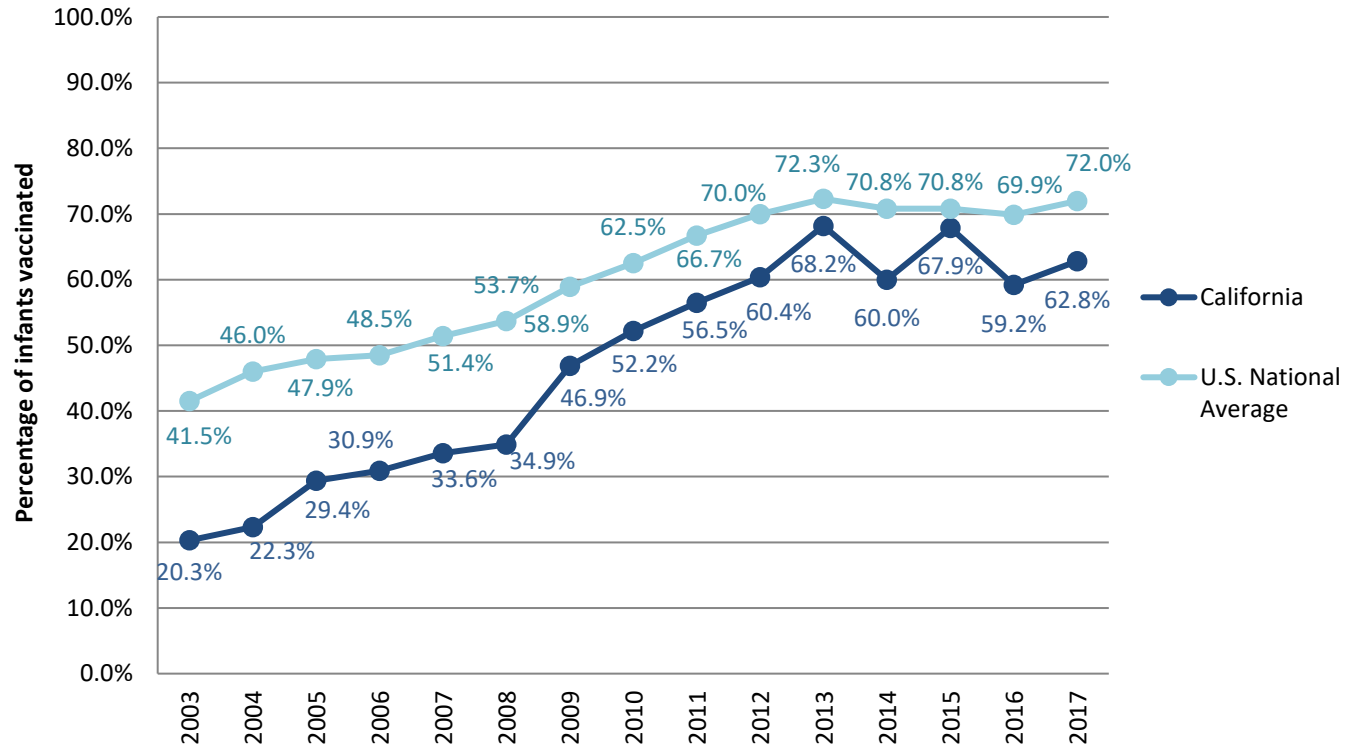
Estimated Vaccination Coverage for Hepatitis B Vaccine among Children from Birth to 3 Days of Age in California



Data compiled by the ALC from National Immunization Surveys, 1995-2017¹,
<https://www.cdc.gov/vaccines/imz-managers/coverage/childvaxview/data-reports/hepb/index.html>

GRAPH:

Percentage of Infants Receiving 1 Dose of Hepatitis B Vaccine within 2 Days of Birth



Data compiled by the ALC from National Immunization Surveys, 1995-2017¹,
<https://www.cdc.gov/vaccines/imz-managers/coverage/childvaxview/data-reports/hepb/index.html>

¹ The data from the National Immunization Surveys constitute a composite of data from children who were 19-35 months of age at the time of the survey. Therefore, the data might reflect a different estimate from the states' own birth cohort data.