

INDIANA

CONTACT THE STAFF

COORDINATOR:

Brenda Mason
Email: bmason@isdh.IN.gov
Phone: 317-416-0267
Fax: 317-972-0142

ADDRESS:

Indiana State Department of Health
2 North Meridian, 6th floor
Indianapolis, IN 46204

SCREENING REQUIREMENTS

Does the jurisdiction require screening of pregnant women for hepatitis B infection or hepatitis B surface antigen (HBsAg)?

No

Does the jurisdiction specifically require reporting of positive HBsAg status in pregnant women?

Yes - 410 IAC 1-2.3-47 (2005)

COMPLETION OF HEPATITIS B VACCINATION SERIES

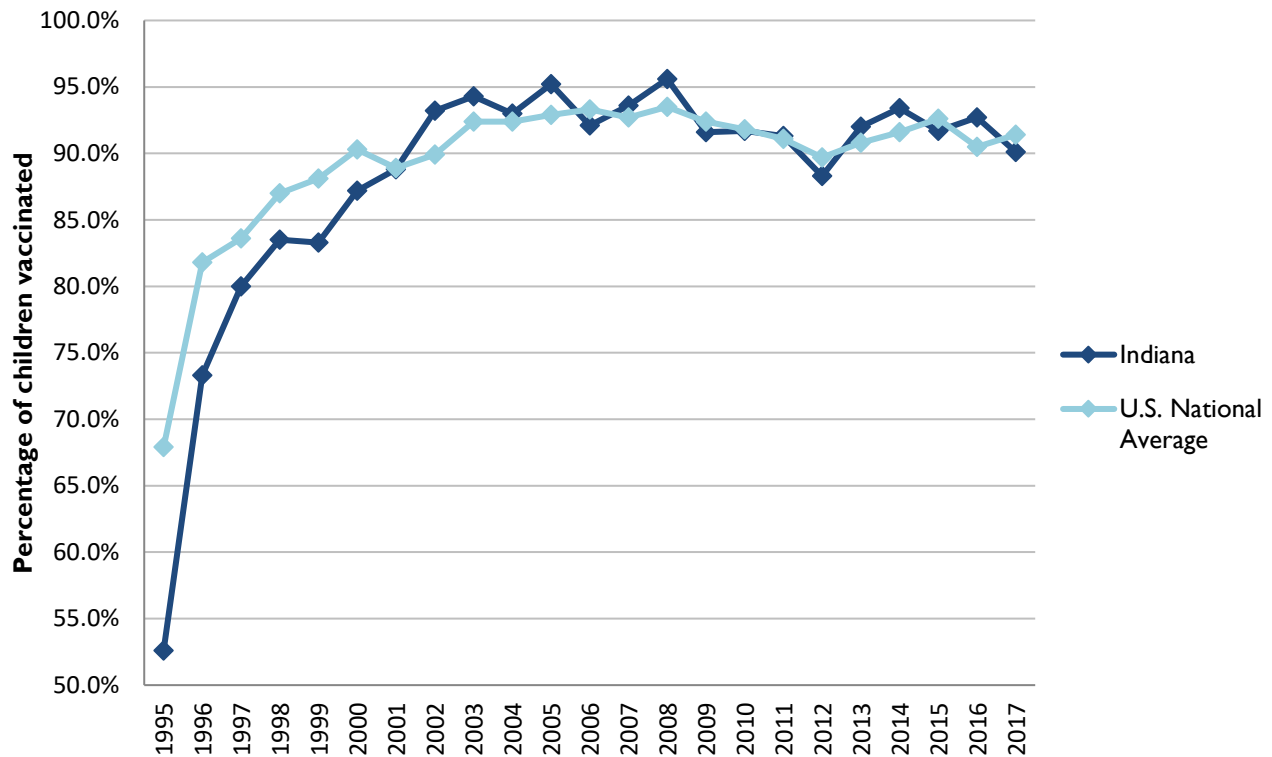
3 or more doses among children 19-35 months of age

	Percentage of children 19-35 months of age receiving 3 or more doses	Rank among other states	U.S. National Average	#1 ranked state and coverage
1995	52.6 ± 6.2%	42	67.9 ± 1.3%	88.5 ± 5.4% (South Carolina)
1996	73.3 ± 4.9%	43	81.8 ± 0.9%	95.8 ± 2.2% (South Carolina)
1997	80.0 ± 4.1%	44	83.6 ± 0.8%	91.6 ± 4.2% (New Jersey)
1998	83.5 ± 4.2%	43	87.0 ± 0.7%	94.1 ± 2.7% (South Carolina)
1999	83.3 ± 4.0%	45	88.1 ± 0.7%	94.0 ± 3.1% (Rhode Island)
2000	87.2 ± 3.7%	42	90.3 ± 0.6%	96.4 ± 1.9% (Rhode Island)
2001	88.8 ± 3.4%	27	88.9 ± 0.7%	95.8 ± 2.2% (Rhode Island)
2002	93.2 ± 2.7%	8	89.9 ± 0.7%	97.0 ± 2.0% (Rhode Island)
2003	94.3 ± 2.9%	11	92.4 ± 0.6%	98.2 ± 1.4% (Connecticut)
2004	93.0 ± 2.9%	28	92.4 ± 0.6%	96.8 ± 1.7% (Florida)
2005	95.2 ± 4.3%	9	92.9 ± 0.6%	97.9 ± 2.0% (Massachusetts)
2006	92.1 ± 3.6%	35	93.3 ± 0.6%	97.8 ± 1.6% (Rhode Island)
2007	93.6 ± 2.5%	26	92.7 ± 0.7%	98.6 ± 1.5% (New Hampshire)
2008	95.6 ± 2.6%	8	93.5 ± 0.7%	98.1 ± 1.6% (Connecticut)
2009	91.6 ± 3.4%	31	92.4 ± 0.7%	98.8 ± 1.5% (Rhode Island)
2010	91.7 ± 3.4%	30	91.8 ± 0.7%	98.3 ± 1.5% (North Dakota)
2011	91.3 ± 3.8%	24	91.1 ± 0.7%	97.1 ± 1.7% (Louisiana)
2012	88.3 ± 4.7%	39	89.7 ± 0.9%	96.3 ± 3.0% (Georgia)
2013	92.0 ± 4.0%	20	90.8 ± 1.0%	96.7 ± 2.3% (Rhode Island)
2014	93.4 ± 4.1%	16	91.6 ± 0.9%	97.6 ± 1.8% (Louisiana)
2015	91.7 ± 4.6%	35	92.6 ± 0.7%	97.3 ± 2.3% (Connecticut)
2016	92.7 ± 3.6%	23	90.5 ± 1.1%	97.4 ± 1.9% (Iowa)
2017	90.1 ± 4.8%	38	91.4 ± 0.9%	97.7 ± 1.6% (North Dakota)

Data compiled by the ALC from National Immunization Surveys, 1995-2017¹,
<https://www.cdc.gov/vaccines/imz-managers/coverage/childvaxview/data-reports/hepb/index.html>

GRAPH:

Percentage of Children 19-35 Months of Age Receiving 3 or More Doses of Hepatitis B Vaccine



Data compiled by the ALC from National Immunization Surveys, 1995-2017¹, <https://www.cdc.gov/vaccines/imz-managers/coverage/childvaxview/data-reports/hepb/index.html>

HEPATITIS B BIRTH DOSE VACCINATION COVERAGE

1 or more dose among infants within 3 days of birth

	Percentage of infants receiving			Rank among other states according to		
	1 dose within 1 day of birth*	1 dose within 2 days of birth	1 dose within 3 days of birth*	1 dose within 1 day of birth	1 dose within 2 days of birth	1 dose within 3 days of birth
2003		58.0 ± 6.8%		N/A	17	N/A
2004		69.0 ± 6.0%		N/A	10	N/A
2005		66.5 ± 8.0%		N/A	10	N/A
2006	61.0 ± 6.5%	64.8 ± 6.4%	65.6 ± 6.4%	9	13	16
2007	63.9 ± 5.5%	71.3 ± 5.1%	72.3 ± 5.0%	9	9	11
2008	56.1 ± 7.4%	62.9 ± 7.3%	64.5 ± 7.3%	18	23	25
2009	66.3 ± 6.1%	72.7 ± 5.6%	74.8 ± 5.4%	8	7	7
2010	62.9 ± 6.0%	75.1 ± 5.4%	77.9 ± 5.1%	16	9	8
2011	71.1 ± 6.0%	81.7 ± 5.0%	83.4 ± 4.6%	10	3	2
2012	70.0 ± 7.0%	76.2 ± 6.3%	78.2 ± 6.0%	15	18	16
2013	73.7 ± 6.4%	79.9 ± 6.0%	82.8 ± 5.7%	13	10	4
2014	76.2 ± 6.4%	82.7 ± 5.8%	83.1 ± 5.7%	6	4	7
2015	71.7 ± 7.0%	76.6 ± 6.8%	80.0 ± 6.3%	14	14	9
2016	71.4 ± 6.4%	77.4 ± 6.3	78.1 ± 6.2	10	6	7
2017	74.3 ± 6.7%	77.9 ± 6.2%	78.0 ± 6.2%	12	12	17

*No data available 2003-2005

2017 U.S. NATIONAL AVERAGE

Day 1: 65.7 ± 1.6%
Day 2: 72.0 ± 1.6%
Day 3: 73.6 ± 1.6%

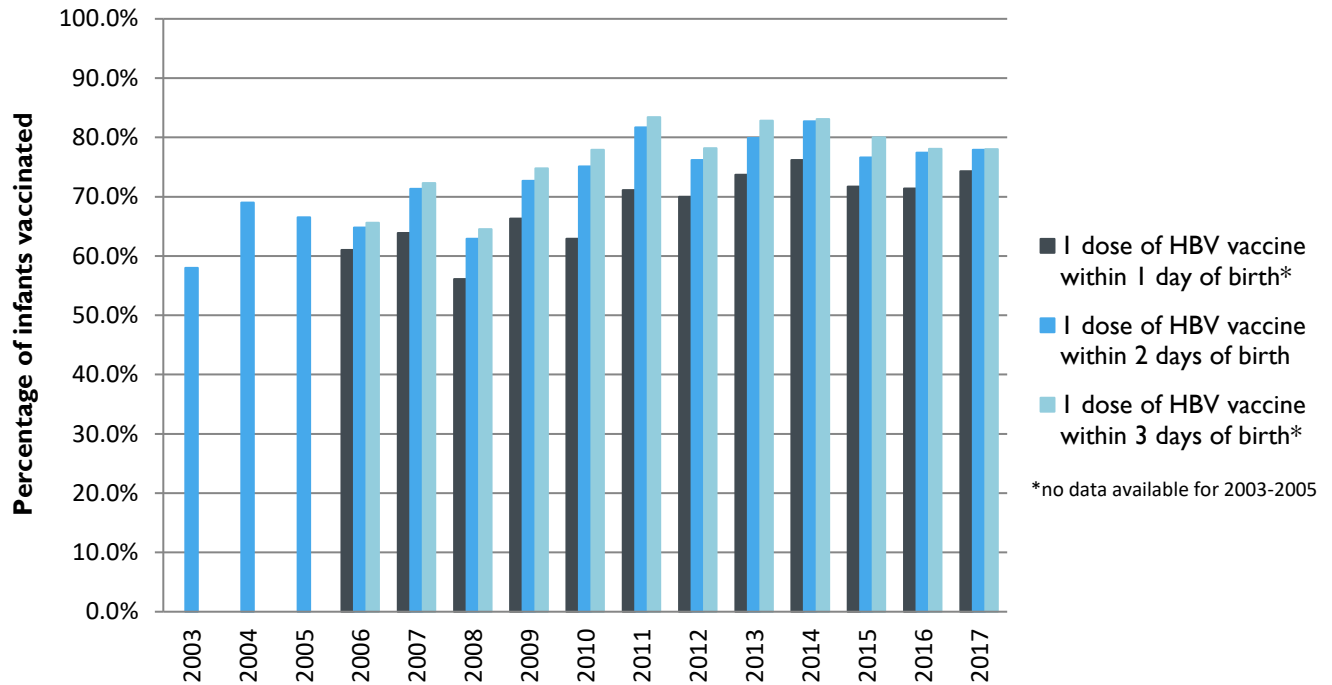
2017 HIGHEST BIRTH DOSE COVERAGE

Day 1: 82.0 ± 5.7% (Kentucky)
Day 2: 84.1 ± 5.6% (Kentucky)
Day 3: 84.1 ± 5.6% (Kentucky)

Data compiled by the ALC from National Immunization Surveys, 1995-2017¹,
<https://www.cdc.gov/vaccines/imz-managers/coverage/childvaxview/data-reports/hepb/index.html>

GRAPH:

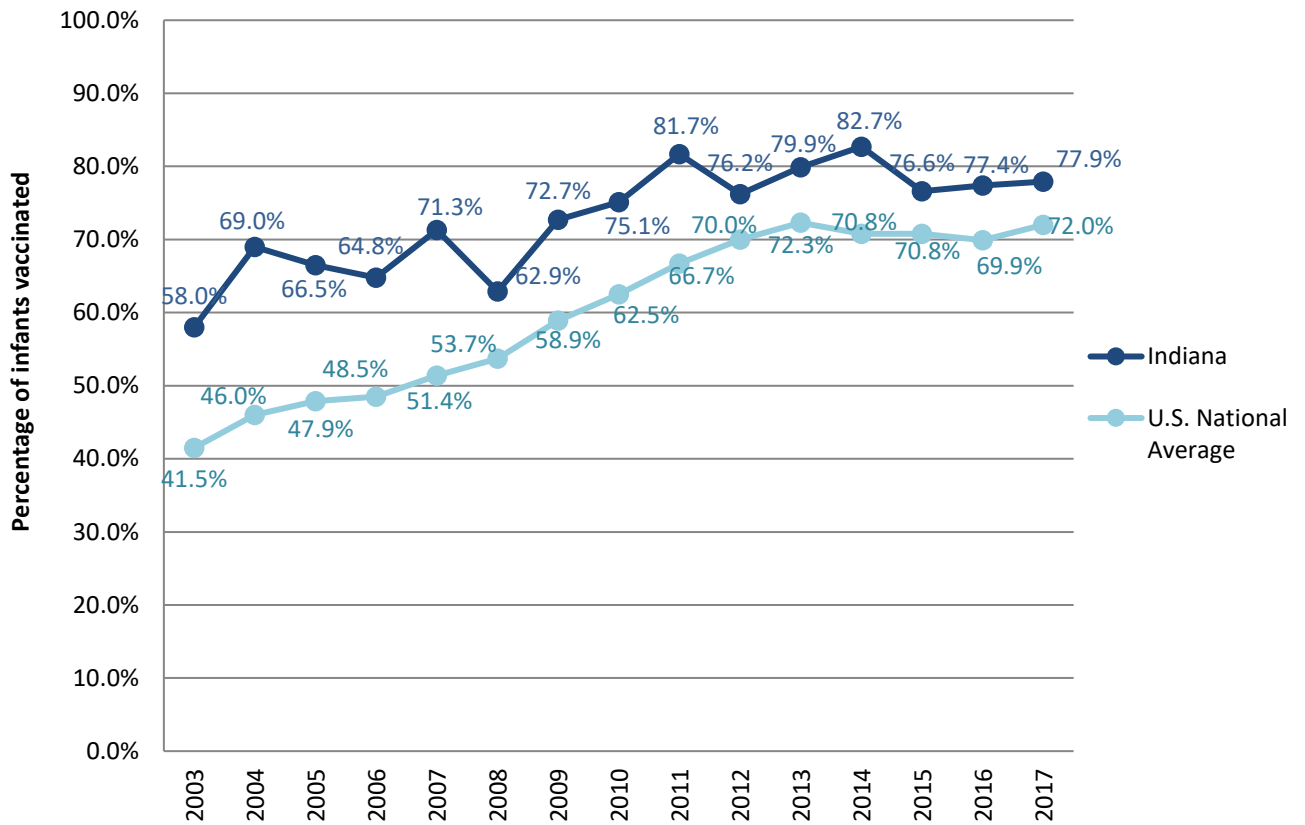
Estimated Vaccination Coverage for Hepatitis B Vaccine among Children from Birth to 3 Days of Age in Indiana



Data compiled by the ALC from National Immunization Surveys, 1995-2017¹,
<https://www.cdc.gov/vaccines/imz-managers/coverage/childvaxview/data-reports/hepb/index.html>

GRAPH:

Percentage of Infants Receiving 1 Dose of Hepatitis B Vaccine within 2 Days of Birth



Data compiled by the ALC from National Immunization Surveys, 1995-2017¹,
<https://www.cdc.gov/vaccines/imz-managers/coverage/childvaxview/data-reports/hepb/index.html>

¹ The data from the National Immunization Surveys constitute a composite of data from children who were 19-35 months of age at the time of the survey. Therefore, the data might reflect a different estimate from the states' own birth cohort data.