

OHIO

CONTACT THE STAFF

COORDINATOR:

Alise Brown, RN, BA
Email: Alise.Brown@odh.ohio.gov
Phone: 614-644-0230
Fax: 614-728-4279

ADDRESS:

Ohio Department of Health
Bureau of Infectious Diseases
35 E. Chestnut Street, 7th Floor
Columbus, OH 43215

SCREENING REQUIREMENTS

Does the jurisdiction require screening of pregnant women for hepatitis B infection or hepatitis B surface antigen (HBsAg)?

No

Does the jurisdiction specifically require reporting of positive HBsAg status in pregnant women?

No

COMPLETION OF HEPATITIS B VACCINATION SERIES

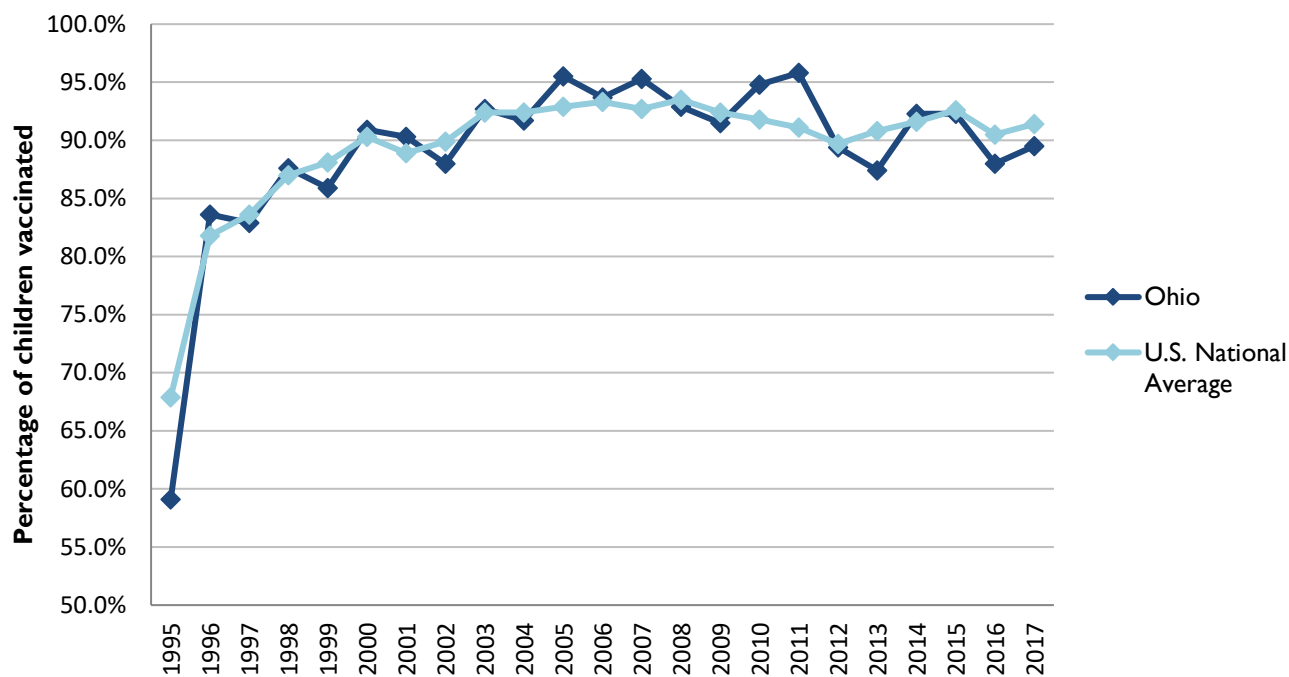
3 or more doses among children 19-35 months of age

	Percentage of children 19-35 months of age receiving 3 or more doses	Rank among other states	U.S. National Average	#1 ranked state and coverage
1995	59.1 ± 5.5%	36	67.9 ± 1.3%	88.5 ± 5.4% (South Carolina)
1996	83.6 ± 3.6%	21	81.8 ± 0.9%	95.8 ± 2.2% (South Carolina)
1997	82.9 ± 3.9%	31	83.6 ± 0.8%	91.6 ± 4.2% (New Jersey)
1998	87.6 ± 3.2%	22	87.0 ± 0.7%	94.1 ± 2.7% (South Carolina)
1999	85.9 ± 3.4%	39	88.1 ± 0.7%	94.0 ± 3.1% (Rhode Island)
2000	90.9 ± 3.0%	21	90.3 ± 0.6%	96.4 ± 1.9% (Rhode Island)
2001	90.3 ± 2.7%	17	88.9 ± 0.7%	95.8 ± 2.2% (Rhode Island)
2002	88.0 ± 3.7%	41	89.9 ± 0.7%	97.0 ± 2.0% (Rhode Island)
2003	92.7 ± 3.1%	23	92.4 ± 0.6%	98.2 ± 1.4% (Connecticut)
2004	91.7 ± 3.9%	36	92.4 ± 0.6%	96.8 ± 1.7% (Florida)
2005	95.5 ± 2.3%	6	92.9 ± 0.6%	97.9 ± 2.0% (Massachusetts)
2006	93.7 ± 3.0%	22	93.3 ± 0.6%	97.8 ± 1.6% (Rhode Island)
2007	95.3 ± 2.8%	10	92.7 ± 0.7%	98.6 ± 1.5% (New Hampshire)
2008	92.9 ± 5.0%	30	93.5 ± 0.7%	98.1 ± 1.6% (Connecticut)
2009	91.5 ± 3.6%	32	92.4 ± 0.7%	98.8 ± 1.5% (Rhode Island)
2010	94.8 ± 2.9%	11	91.8 ± 0.7%	98.3 ± 1.5% (North Dakota)
2011	95.8 ± 2.5%	4	91.1 ± 0.7%	97.1 ± 1.7% (Louisiana)
2012	89.4 ± 4.9%	30	89.7 ± 0.9%	96.3 ± 3.0% (Georgia)
2013	87.4 ± 5.5%	46	90.8 ± 1.0%	96.7 ± 2.3% (Rhode Island)
2014	92.3 ± 3.9%	25	91.6 ± 0.9%	97.6 ± 1.8% (Louisiana)
2015	92.3 ± 4.3%	29	92.6 ± 0.7%	97.3 ± 2.3% (Connecticut)
2016	88.0 ± 5.6%	45	90.5 ± 1.1%	97.4 ± 1.9 (Iowa)
2017	89.5 ± 4.0%	41	91.4 ± 0.9%	97.7 ± 1.6% (North Dakota)

Data compiled by the ALC from National Immunization Surveys, 1995-2017¹,
<https://www.cdc.gov/vaccines/imz-managers/coverage/childvaxview/data-reports/hepb/index.html>

GRAPH:

Percentage of Children 19-35 Months of Age Receiving 3 or More Doses of Hepatitis B Vaccine



Data compiled by the ALC from National Immunization Surveys, 1995-2017¹,
<https://www.cdc.gov/vaccines/imz-managers/coverage/childvaxview/data-reports/hepb/index.html>

HEPATITIS B BIRTH DOSE VACCINATION COVERAGE

1 or more dose among infants within 3 days of birth

	Percentage of infants receiving			Rank among other states according to		
	1 dose within 1 day of birth*	1 dose within 2 days of birth	1 dose within 3 days of birth*	1 dose within 1 day of birth	1 dose within 2 days of birth	1 dose within 3 days of birth
2003		52.1 ± 5.8%		N/A	24	N/A
2004		63.9 ± 5.4%		N/A	17	N/A
2005		58.5 ± 5.9%		N/A	19	N/A
2006	53.7 ± 6.3%	62.8 ± 6.3%	66.0 ± 6.2%	20	15	15
2007	52.9 ± 6.6%	61.0 ± 6.5%	62.6 ± 6.5%	23	24	24
2008	52.7 ± 7.2%	64.0 ± 7.0%	64.7 ± 7.0%	23	21	23
2009	51.7 ± 7.4%	61.8 ± 7.5%	63.6 ± 7.5%	30	26	27
2010	61.9 ± 7.4%	72.4 ± 7.2%	73.5 ± 7.1%	18	11	12
2011	72.7 ± 6.9%	79.5 ± 6.4%	81.9 ± 6.2%	7	7	6
2012	67.5 ± 6.7%	76.1 ± 6.4%	77.8 ± 6.2%	20	19	19
2013	62.7 ± 7.3%	74.7 ± 6.7%	78.1 ± 6.4%	29	25	19
2014	60.6 ± 8.4%	71.5 ± 7.9%	73.6 ± 7.8%	35	31	32
2015	63.4 ± 7.8%	75.2 ± 6.9%	77.9 ± 6.5%	28	17	16
2016	65.9 ± 7.7%	73.7 ± 7.0%	74.9 ± 6.9%	23	17	20
2017	63.6 ± 7.2%	73.5 ± 6.9%	76.5 ± 6.7%	37	27	20

*No data available 2003-2005

2017 U.S. NATIONAL AVERAGE

Day 1: 65.7 ± 1.6%
Day 2: 72.0 ± 1.6%
Day 3: 73.6 ± 1.6%

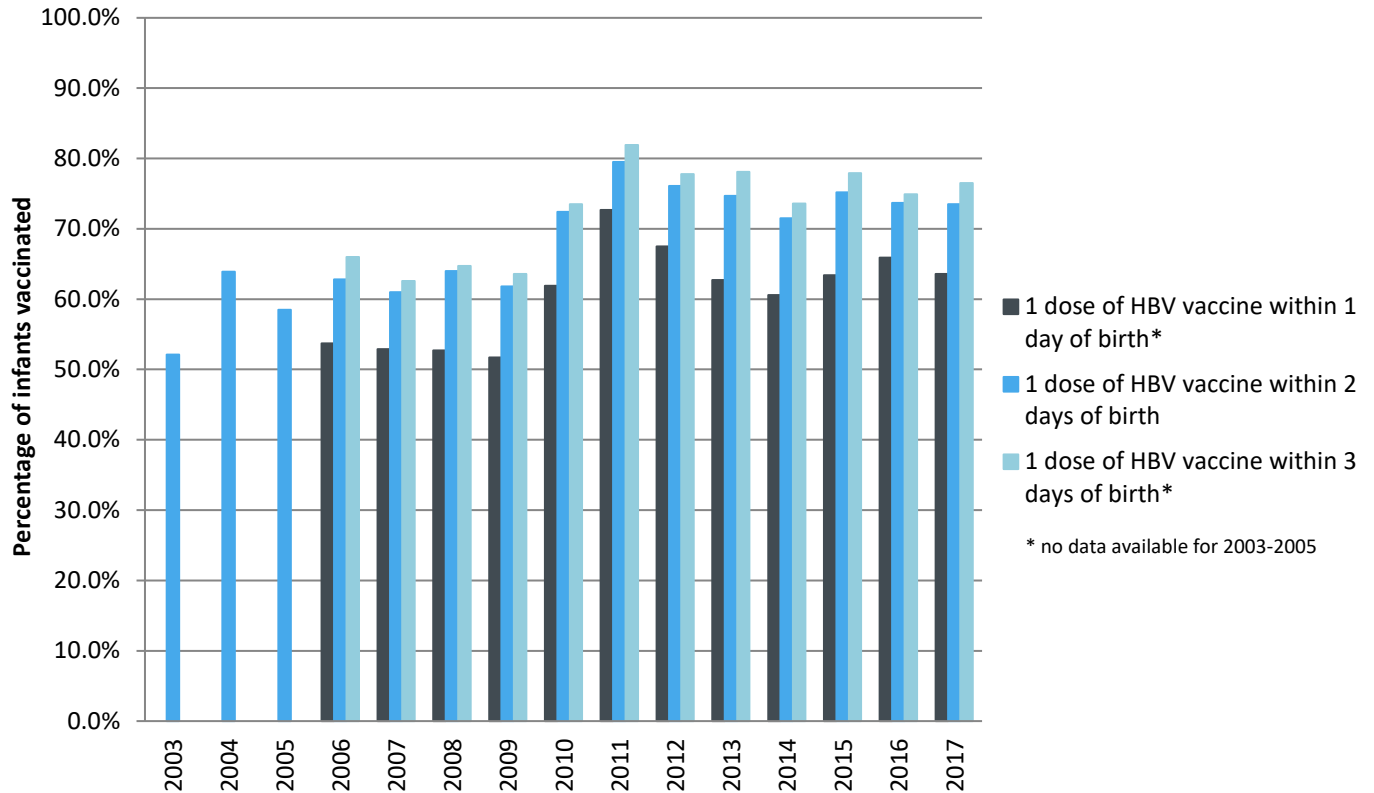
2017 HIGHEST BIRTH DOSE COVERAGE

Day 1: 82.0 ± 5.7% (Kentucky)
Day 2: 84.1 ± 5.6% (Kentucky)
Day 3: 84.1 ± 5.6% (Kentucky)

Data compiled by the ALC from National Immunization Surveys, 1995-2017¹,
<https://www.cdc.gov/vaccines/imz-managers/coverage/childvaxview/data-reports/hepb/index.html>

GRAPH:

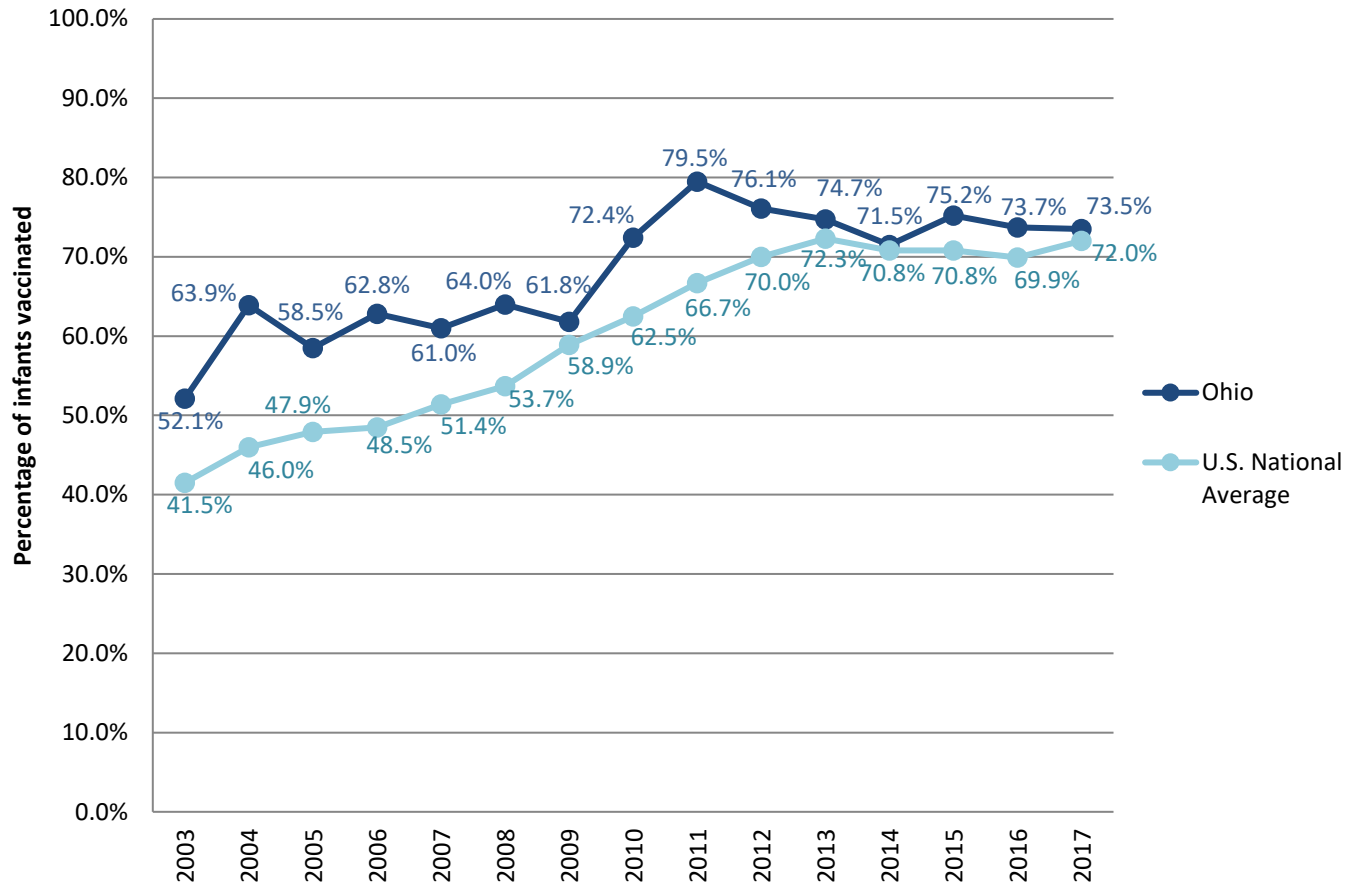
Estimated Vaccination Coverage for Hepatitis B Vaccine among Children from Birth to 3 Days of Age in Ohio



Data compiled by the ALC from National Immunization Surveys, 1995-2017¹,
<https://www.cdc.gov/vaccines/imz-managers/coverage/childvaxview/data-reports/hepb/index.html>

GRAPH:

Percentage of Infants Receiving 1 Dose of Hepatitis B Vaccine within 2 Days of Birth



Data compiled by the ALC from National Immunization Surveys, 1995-2017¹,
<https://www.cdc.gov/vaccines/imz-managers/coverage/childvaxview/data-reports/hepb/index.html>

¹ The data from the National Immunization Surveys constitute a composite of data from children who were 19-35 months of age at the time of the survey. Therefore, the data might reflect a different estimate from the states' own birth cohort data.