

ALASKA

CONTACT THE STAFF

COORDINATOR:

Annie Peterson-Lewis
Email: Annie.peterson-lewis@alaska.gov
Phone: 907-269-8013
Fax: 907-562-7802

ADDRESS:

State of Alaska
Dept of Health & Social Services
Division of Public Health
3601 C Street, Suite 540
Anchorage, Alaska 99503

SCREENING REQUIREMENTS

Does the jurisdiction require screening of pregnant women for hepatitis B infection or hepatitis B surface antigen (HBsAg)?

Yes - Alaska Stat. § 18.15.400

Does the jurisdiction specifically require reporting of positive HBsAg status in pregnant women?

No

COMPLETION OF HEPATITIS B VACCINATION SERIES

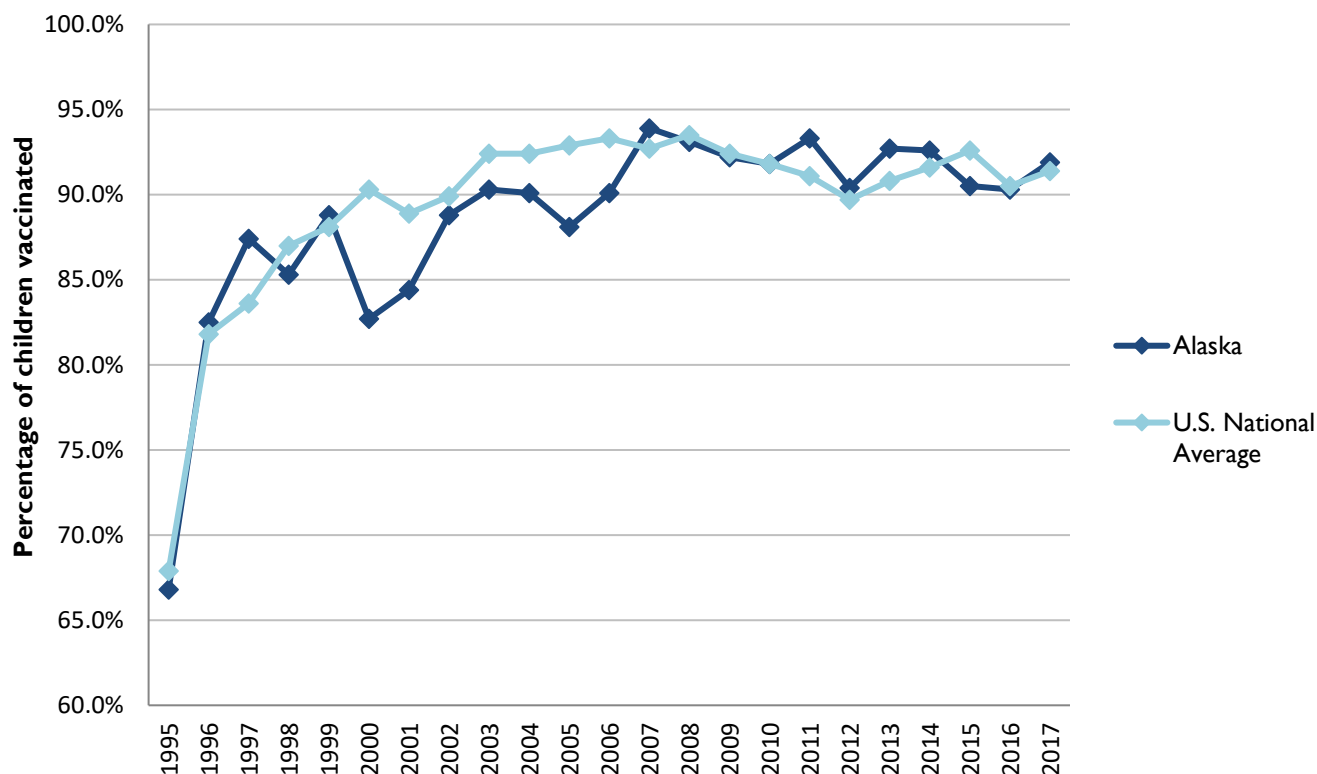
3 or more doses among children 19-35 months of age

	Percentage of children 19-35 months of age receiving 3 or more doses	Rank among other states	U.S. National Average	#1 ranked state and coverage
1995	66.8 ± 7.4%	24	67.9 ± 1.3%	88.5 ± 5.4% (South Carolina)
1996	82.5 ± 5.1%	23	81.8 ± 0.9%	95.8 ± 2.2% (South Carolina)
1997	87.4 ± 4.1%	12	83.6 ± 0.8%	91.6 ± 4.2% (New Jersey)
1998	85.3 ± 4.4%	37	87.0 ± 0.7%	94.1 ± 2.7% (South Carolina)
1999	88.8 ± 3.6%	28	88.1 ± 0.7%	94.0 ± 3.1% (Rhode Island)
2000	82.7 ± 4.8%	50	90.3 ± 0.6%	96.4 ± 1.9% (Rhode Island)
2001	84.4 ± 4.6%	46	88.9 ± 0.7%	95.8 ± 2.2% (Rhode Island)
2002	88.8 ± 4.7%	38	89.9 ± 0.7%	97.0 ± 2.0% (Rhode Island)
2003	90.3 ± 3.8%	38	92.4 ± 0.6%	98.2 ± 1.4% (Connecticut)
2004	90.1 ± 4.7%	42	92.4 ± 0.6%	96.8 ± 1.7% (Florida)
2005	88.1 ± 5.0%	44	92.9 ± 0.6%	97.9 ± 2.0% (Massachusetts)
2006	90.1 ± 4.3%	44	93.3 ± 0.6%	97.8 ± 1.6% (Rhode Island)
2007	93.9 ± 3.5%	23	92.7 ± 0.7%	98.6 ± 1.5% (New Hampshire)
2008	93.1 ± 3.5%	28	93.5 ± 0.7%	98.1 ± 1.6% (Connecticut)
2009	92.2 ± 4.1%	27	92.4 ± 0.7%	98.8 ± 1.5% (Rhode Island)
2010	91.8 ± 3.4%	26	91.8 ± 1.5%	98.3 ± 1.5% (North Dakota)
2011	93.3 ± 3.5%	11	91.1 ± 0.7%	97.1 ± 1.7% (Louisiana)
2012	90.2 ± 4.5%	26	89.7 ± 0.9%	96.3 ± 3.0% (Georgia)
2013	92.7 ± 3.4%	16	90.8 ± 1.0%	96.7 ± 2.3% (Rhode Island)
2014	92.6 ± 3.9%	22	91.6 ± 0.9%	97.6 ± 1.8% (Louisiana)
2015	90.5 ± 3.7%	43	92.6 ± 0.7%	97.3 ± 2.3% (Connecticut)
2016	90.3 ± 4.1%	30	90.5 ± 1.1%	97.4 ± 1.9% (Iowa)
2017	91.9 ± 3.3%	26	91.4 ± 0.9%	97.7 ± 1.6% (North Dakota)

Data compiled by the ALC from National Immunization Surveys, 1995-2017¹,
<https://www.cdc.gov/vaccines/imz-managers/coverage/childvaxview/data-reports/hepb/index.html>

GRAPH:

Percentage of Children 19-35 Months of Age Receiving 3 or More Doses of Hepatitis B Vaccine



Data compiled by the ALC from National Immunization Surveys, 1995-2017¹,
<https://www.cdc.gov/vaccines/imz-managers/coverage/childvaxview/data-reports/hepb/index.html>

HEPATITIS B BIRTH DOSE VACCINATION COVERAGE

1 or more dose among infants within 3 days of birth

	Percentage of infants receiving			Rank among other states according to		
	1 dose within 1 day of birth*	1 dose within 2 days of birth	1 dose within 3 days of birth*	1 dose within 1 day of birth	1 dose within 2 days of birth	1 dose within 3 days of birth
2003		60.9 ± 6.7%		N/A	13	N/A
2004		54.2 ± 7.3%		N/A	25	N/A
2005		60.0 ± 7.9%		N/A	16	N/A
2006	55.9 ± 7.2%	57.8 ± 7.2%	58.7 ± 7.2%	14	24	25
2007	60.4 ± 7.5%	62.9 ± 7.4%	63.2 ± 7.4%	13	18	21
2008	63.2 ± 7.0%	64.3 ± 6.9%	64.6 ± 6.9%	8	20	24
2009	59.6 ± 7.9%	64.4 ± 7.7%	65.4 ± 7.6%	19	22	23
2010	67.9 ± 6.2%	70.4 ± 6.1%	71.2 ± 6.0%	8	13	16
2011	62.5 ± 7.2%	63.3 ± 7.1%	63.9 ± 7.1%	28	38	42
2012	54.4 ± 6.9%	56.0 ± 6.9%	56.8 ± 6.9%	44	49	49
2013	56.9 ± 7.1%	59.2 ± 7.0%	59.4 ± 7.0%	42	45	47
2014	50.9 ± 7.6%	53.6 ± 7.6%	54.1 ± 7.6%	44	48	48
2015	63.3 ± 6.2%	64.8 ± 6.1%	65.7 ± 6.1%	31	42	45
2016	61.1 ± 6.7%	65.6 ± 6.5%	67.8 ± 6.4%	36	40	41
2017	66.7 ± 6.6%	68.9 ± 6.5%	70.8 ± 6.3%	31	40	41

*No data available 2003-2005

2017 U.S. NATIONAL AVERAGE

Day 1: 65.7 ± 1.6%
Day 2: 72.0 ± 1.6%
Day 3: 73.6 ± 1.6%

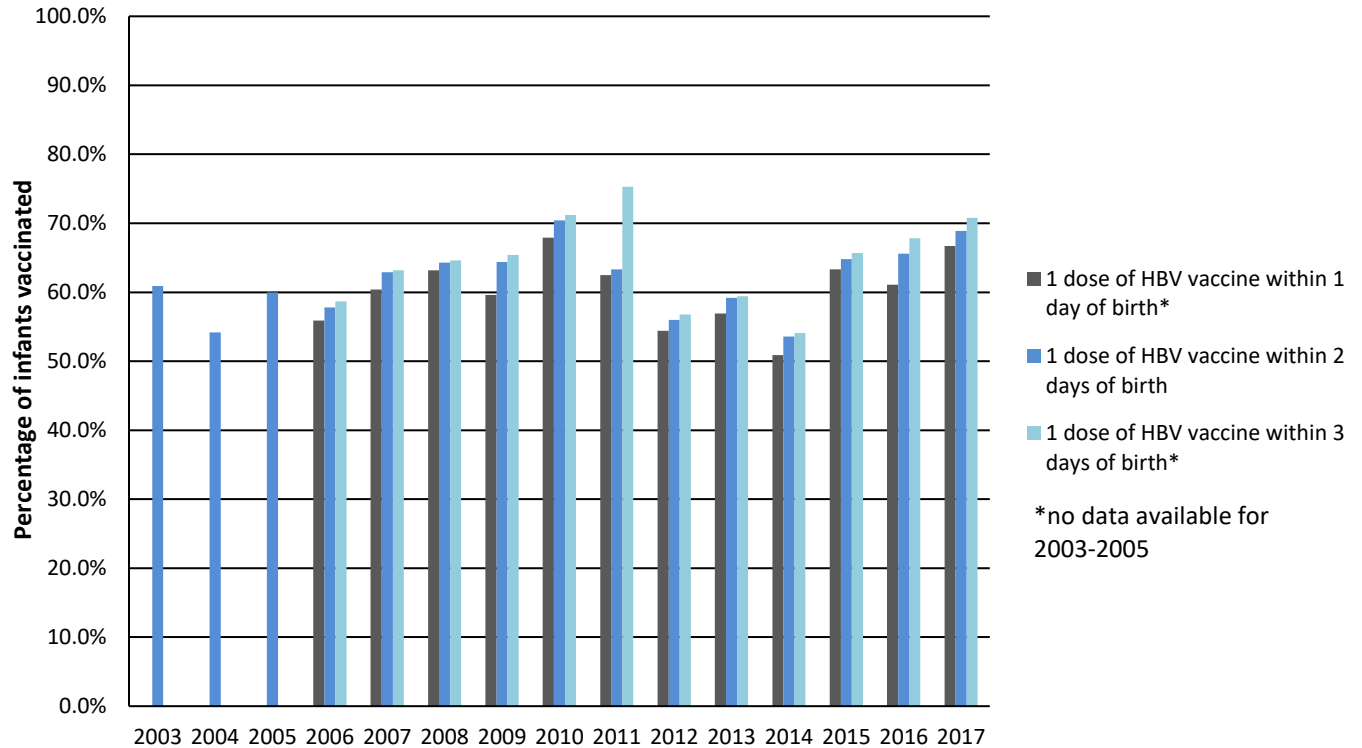
2017 HIGHEST BIRTH DOSE COVERAGE

Day 1: 82.0 ± 5.7% (Kentucky)
Day 2: 84.1 ± 5.6% (Kentucky)
Day 3: 84.1 ± 5.6% (Kentucky)

Data compiled by the ALC from National Immunization Surveys, 1995-2017¹,
<https://www.cdc.gov/vaccines/imz-managers/coverage/childvaxview/data-reports/hepb/index.html>

GRAPH:

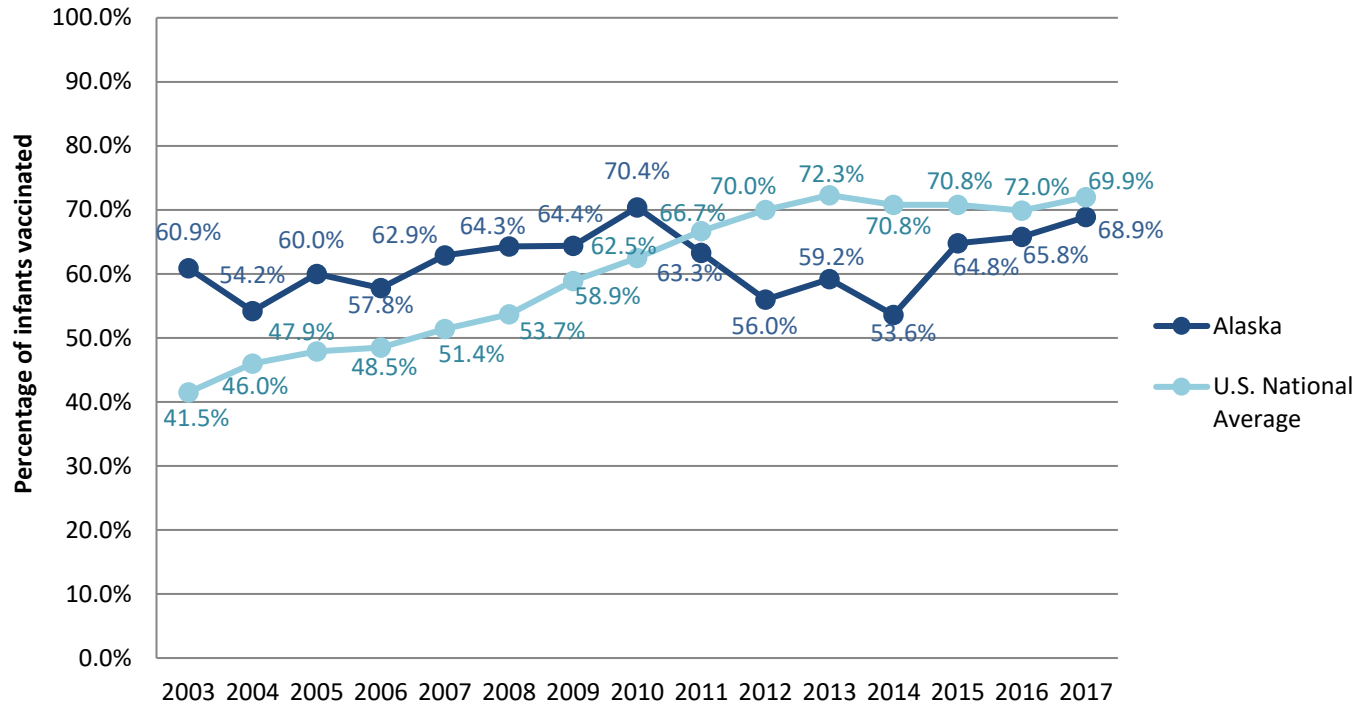
Estimated Vaccination Coverage for Hepatitis B Vaccine among Children from Birth to 3 Days of Age in Alaska



Data compiled by the ALC from National Immunization Surveys, 1995-2017¹,
<https://www.cdc.gov/vaccines/imz-managers/coverage/childvaxview/data-reports/hepb/index.html>

GRAPH:

Percentage of Infants Receiving 1 Dose of Hepatitis B Vaccine within 2 Days of Birth



Data compiled by the ALC from National Immunization Surveys, 1995-2017¹,
<https://www.cdc.gov/vaccines/imz-managers/coverage/childvaxview/data-reports/hepb/index.html>

¹ The data from the National Immunization Surveys constitute a composite of data from children who were 19-35 months of age at the time of the survey. Therefore, the data might reflect a different estimate from the states' own birth cohort data.