

GEORGIA

CONTACT THE STAFF

COORDINATOR:

Tracy Kavanaugh, MS, MCHES
Email: Tracy.Kavanaugh@dph.ga.gov
Phone: 404-651-5196
Fax: 404-657-6871

ADDRESS:

Georgia Department of Public Health
Epidemiology Section
2 Peachtree Street, NW Suite 14-263
Atlanta, GA 30303

SCREENING REQUIREMENTS

Does the jurisdiction require screening of pregnant women for hepatitis B infection or hepatitis B surface antigen (HBsAg)?

No

Does the jurisdiction specifically require reporting of positive HBsAg status in pregnant women?

Yes - Ga. Code Ann. § 31-12-2(a) (since Jan. 2005)

COMPLETION OF HEPATITIS B VACCINATION SERIES

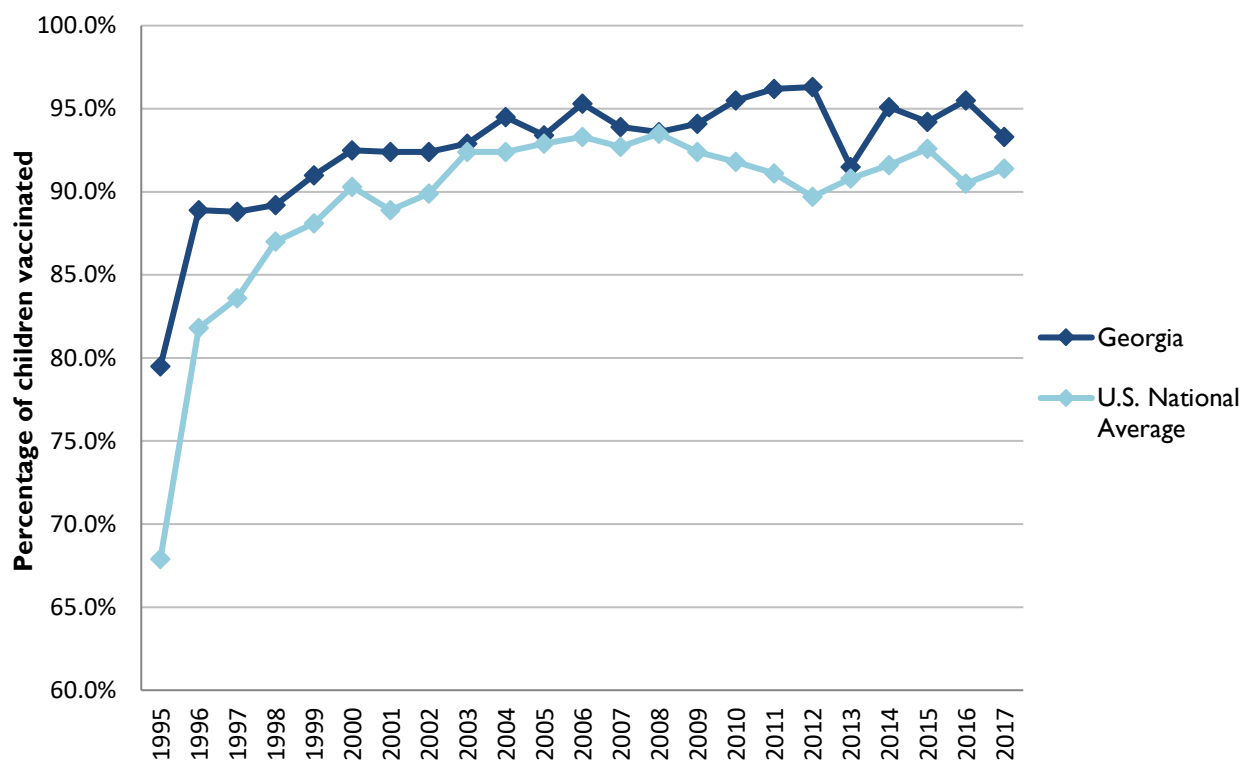
3 or more doses among children 19-35 months of age

	Percentage of children 19-35 months of age receiving 3 or more doses	Rank among other states	U.S. National Average	#1 ranked state and coverage
1995	79.5 ± 6.4%	4	67.9 ± 1.3%	88.5 ± 5.4% (South Carolina)
1996	88.9 ± 3.5%	5	81.8 ± 0.9%	95.8 ± 2.2% (South Carolina)
1997	88.8 ± 3.5%	5	83.6 ± 0.8%	91.6 ± 4.2% (New Jersey)
1998	89.2 ± 3.2%	17	87.0 ± 0.7%	94.1 ± 2.7% (South Carolina)
1999	91.0 ± 3.1%	14	88.1 ± 0.7%	94.0 ± 3.1% (Rhode Island)
2000	92.5 ± 3.0%	12	90.3 ± 0.6%	96.4 ± 1.9% (Rhode Island)
2001	92.4 ± 2.9%	4	88.9 ± 0.7%	95.8 ± 2.2% (Rhode Island)
2002	92.4 ± 2.6%	15	89.9 ± 0.7%	97.0 ± 2.0% (Rhode Island)
2003	92.9 ± 3.0%	22	92.4 ± 0.6%	98.2 ± 1.4% (Connecticut)
2004	94.5 ± 3.1%	14	92.4 ± 0.6%	96.8 ± 1.7% (Florida)
2005	93.4 ± 3.2%	20	92.9 ± 0.6%	97.9 ± 2.0% (Massachusetts)
2006	95.3 ± 2.3%	13	93.3 ± 0.6%	97.8 ± 1.6% (Rhode Island)
2007	93.9 ± 3.4%	24	92.7 ± 0.7%	98.6 ± 1.5% (New Hampshire)
2008	93.6 ± 3.7%	24	93.5 ± 0.7%	98.1 ± 1.6% (Connecticut)
2009	94.1 ± 3.3%	19	92.4 ± 0.7%	98.8 ± 1.5% (Rhode Island)
2010	95.5 ± 3.1%	9	91.8 ± 1.5%	98.3 ± 1.5% (North Dakota)
2011	96.2 ± 2.1%	2	91.1 ± 0.7%	97.1 ± 1.7% (Louisiana)
2012	96.3 ± 3.0%	1	89.7 ± 0.9%	96.3 ± 3.0% (Georgia)
2013	91.5 ± 5.5%	23	90.8 ± 1.0%	96.7 ± 2.3% (Rhode Island)
2014	95.1 ± 3.7%	7	91.6 ± 0.9%	97.6 ± 1.8% (Louisiana)
2015	94.2 ± 3.7%	14	92.6 ± 0.7%	97.3 ± 2.3% (Connecticut)
2016	95.5 ± 2.4%	5	90.5 ± 1.1%	97.4 ± 1.9% (Iowa)
2017	93.3 ± 4.6%	14	91.4 ± 0.9%	97.7 ± 1.6% (North Dakota)

Data compiled by the ALC from National Immunization Surveys, 1995-2017¹, <https://www.cdc.gov/vaccines/imz-managers/coverage/childvaxview/data-reports/hepb/index.html>

GRAPH:

Percentage of Children 19-35 Months of Age Receiving 3 or More Doses of Hepatitis B Vaccine



Data compiled by the ALC from National Immunization Surveys, 1995-2017¹,
<https://www.cdc.gov/vaccines/imz-managers/coverage/childvaxview/data-reports/hepb/index.html>

HEPATITIS B BIRTH DOSE VACCINATION COVERAGE

1 or more dose among infants within 3 days of birth

	Percentage of infants receiving			Rank among other states according to		
	1 dose within 1 day of birth*	1 dose within 2 days of birth	1 dose within 3 days of birth*	1 dose within 1 day of birth	1 dose within 2 days of birth	1 dose within 3 days of birth
2003		34.8 ± 6.9%		N/A	36	N/A
2004		39.6 ± 6.9%		N/A	35	N/A
2005		49.8 ± 6.0%		N/A	30	N/A
2006	47.2 ± 5.7%	51.0 ± 5.7%	52.2 ± 5.7%	26	30	32
2007	57.6 ± 7.6%	62.0 ± 7.4%	62.4 ± 7.4%	17	21	25
2008	58.3 ± 7.3%	65.3 ± 7.0%	65.8 ± 7.0%	16	17	21
2009	63.6 ± 7.0%	70.5 ± 6.6%	71.2 ± 6.6%	13	9	10
2010	67.1 ± 6.5%	74.7 ± 5.9%	74.9 ± 5.8%	9	10	11
2011	73.2 ± 6.0%	81.5 ± 4.9%	82.1 ± 4.9%	6	4	4
2012	75.1 ± 6.8%	85.9 ± 5.3%	87.6 ± 5.1%	7	1	1
2013	N/A	75.7 ± 8.8%	76.4 ± 8.8%	NA	23	25
2014	74.8 ± 7.5%	78.2 ± 7.3%	78.4 ± 7.3%	10	16	19
2015	71.5 ± 6.7%	79.2 ± 5.8%	80.5 ± 5.7%	14	9	7
2016	71.0 ± 6.8%	76.0 ± 6.1%	76.7 ± 6.0	11	11	11
2017	66.1 ± 7.1%	73.8 ± 3.8%	74.6 ± 6.7%	32	25	28

*No data available 2003-2005

2017 U.S. NATIONAL AVERAGE

Day 1: 65.7 ± 1.6%
Day 2: 72.0 ± 1.6%
Day 3: 73.6 ± 1.6%

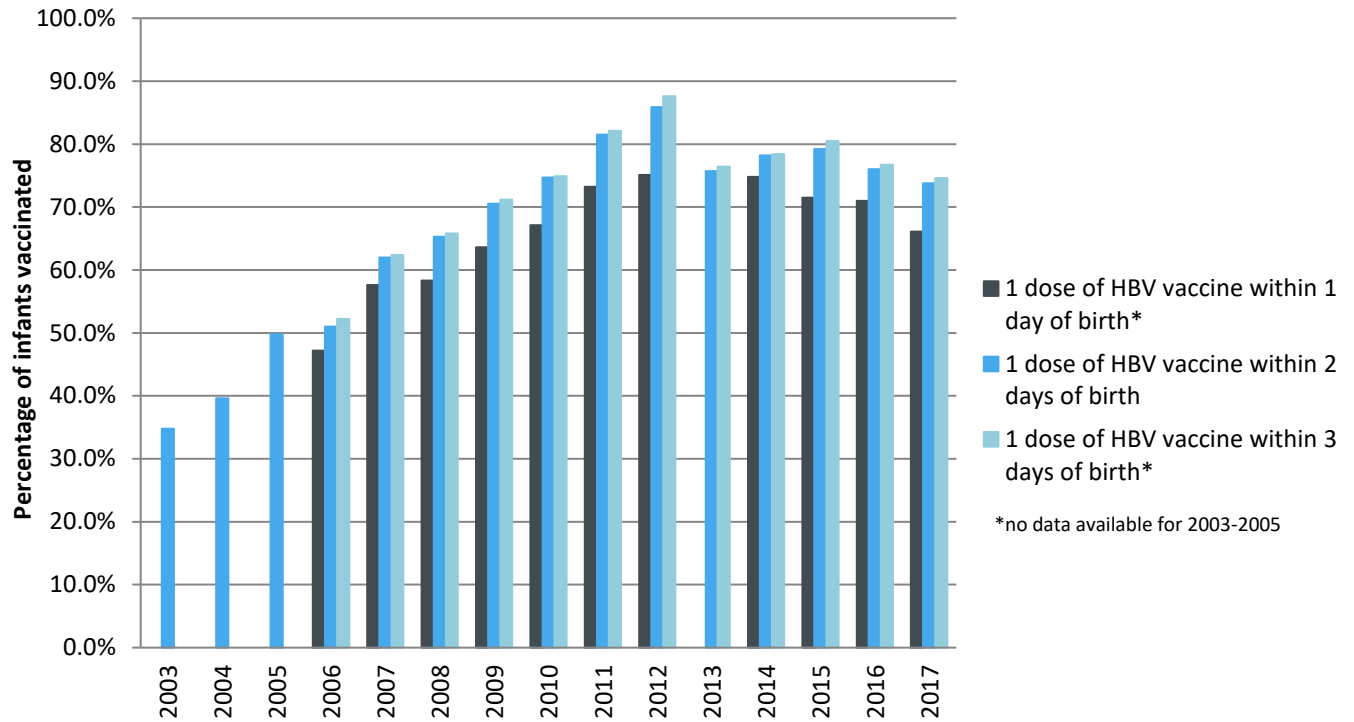
2017 HIGHEST BIRTH DOSE COVERAGE

Day 1: 82.0 ± 5.7% (Kentucky)
Day 2: 84.1 ± 5.6% (Kentucky)
Day 3: 84.1 ± 5.6% (Kentucky)

Data compiled by the ALC from National Immunization Surveys, 1995-2017¹,
<https://www.cdc.gov/vaccines/imz-managers/coverage/childvaxview/data-reports/hepb/index.html>

GRAPH:

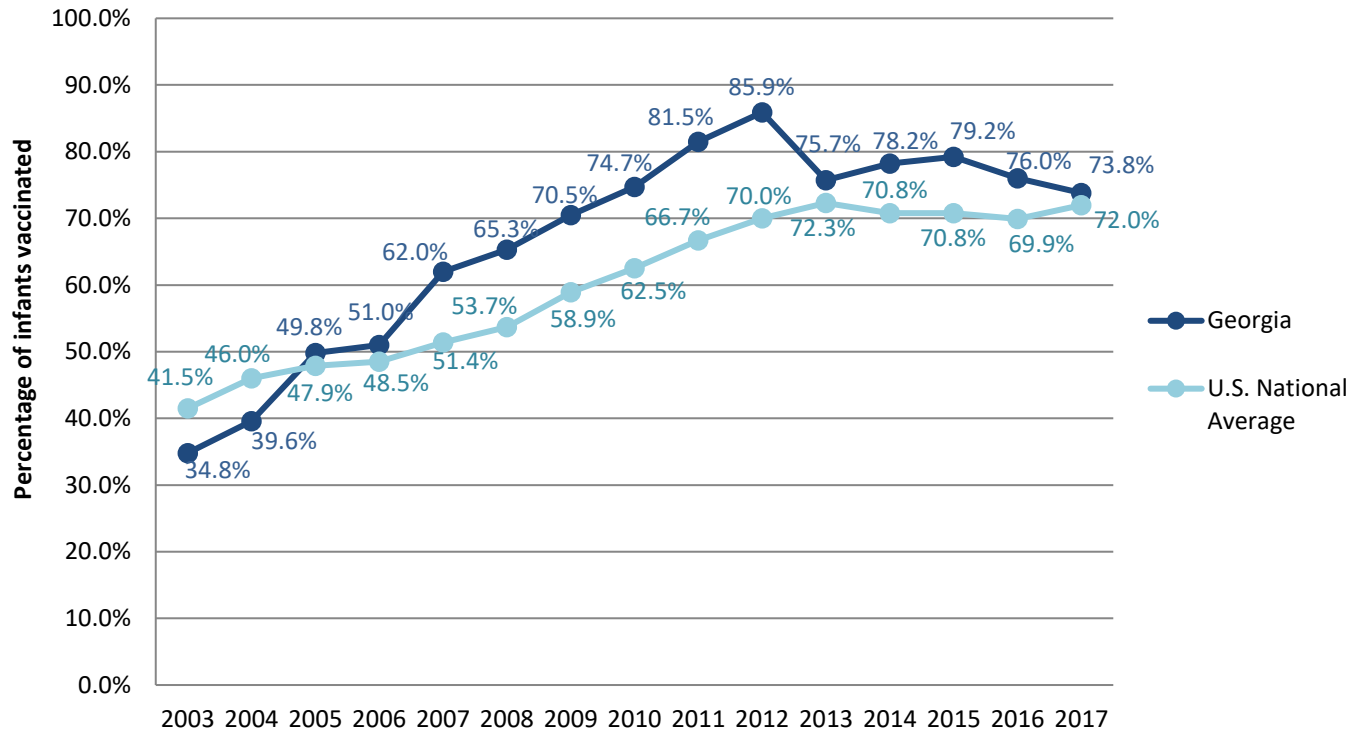
Estimated Vaccination Coverage for Hepatitis B Vaccine among Children from Birth to 3 Days of Age in Georgia



Data compiled by the ALC from National Immunization Surveys, 1995-2017¹,
<https://www.cdc.gov/vaccines/imz-managers/coverage/childvaxview/data-reports/hepb/index.html>

GRAPH:

Percentage of Infants Receiving 1 Dose of Hepatitis B Vaccine within 2 Days of Birth



Data compiled by the ALC from National Immunization Surveys, 1995-2017¹,
<https://www.cdc.gov/vaccines/imz-managers/coverage/childvaxview/data-reports/hepb/index.html>

¹ The data from the National Immunization Surveys constitute a composite of data from children who were 19-35 months of age at the time of the survey. Therefore, the data might reflect a different estimate from the states' own birth cohort data.