

# IOWA

---

## CONTACT THE STAFF

### COORDINATOR:

Shelly Jensen  
Email: [Shelly.Jensen@idph.iowa.gov](mailto:Shelly.Jensen@idph.iowa.gov)  
Toll Free: 800-831-6293 ext. 2  
Phone: 515-281-4938  
Fax: 800-831-6292

### ADDRESS:

Iowa Department of Public Health  
321 East 12th Street  
Des Moines, IA 50319-0075

---

## SCREENING REQUIREMENTS

Does the jurisdiction require screening of pregnant women for hepatitis B infection or hepatitis B surface antigen (HBsAg)?

No

Does the jurisdiction specifically require reporting of positive HBsAg status in pregnant women?

No

---

## COMPLETION OF HEPATITIS B VACCINATION SERIES

3 or more doses among children 19-35 months of age

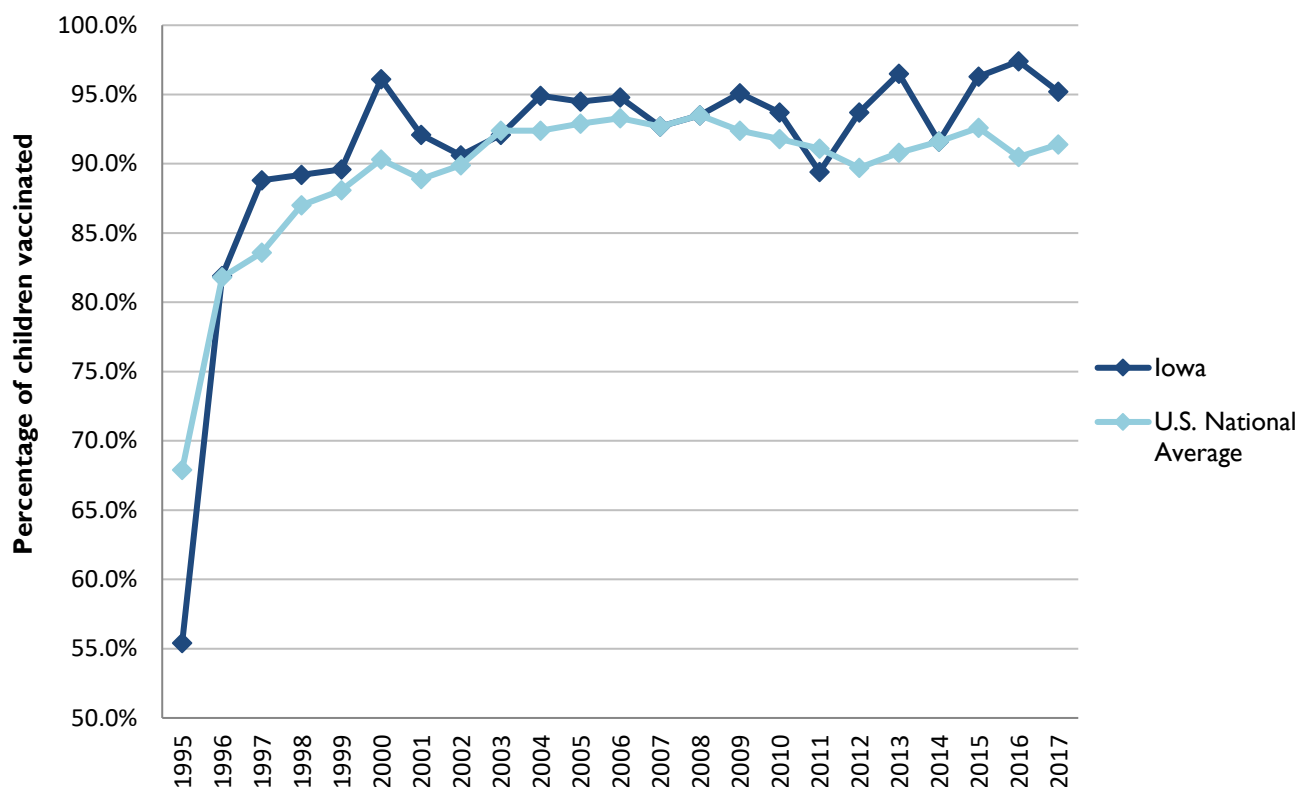
|      | Percentage of children 19-35 months of age receiving 3 or more doses | Rank among other states | U.S. National Average | #1 ranked state and coverage |
|------|--|-------------------------|-----------------------|------------------------------|
| 1995 | 55.4 ± 6.4%  | 40                      | 67.9 ± 1.3%           | 88.5 ± 5.4% (South Carolina) |
| 1996 | 81.9 ± 4.7%  | 24                      | 81.8 ± 0.9%           | 95.8 ± 2.2% (South Carolina) |
| 1997 | 88.8 ± 3.7%  | 4                       | 83.6 ± 0.8%           | 91.6 ± 4.2% (New Jersey)     |
| 1998 | 89.2 ± 3.5%  | 16                      | 87.0 ± 0.7%           | 94.1 ± 2.7% (South Carolina) |
| 1999 | 89.6 ± 3.6%  | 25                      | 88.1 ± 0.7%           | 94.0 ± 3.1% (Rhode Island)   |
| 2000 | 96.1 ± 2.6%  | 2                       | 90.3 ± 0.6%           | 96.4 ± 1.9% (Rhode Island)   |
| 2001 | 92.1 ± 3.5%  | 6                       | 88.9 ± 0.7%           | 95.8 ± 2.2% (Rhode Island)   |
| 2002 | 90.6 ± 4.2%  | 28                      | 89.9 ± 0.7%           | 97.0 ± 2.0% (Rhode Island)   |
| 2003 | 92.1 ± 3.9%  | 27                      | 92.4 ± 0.6%           | 98.2 ± 1.4% (Connecticut)    |
| 2004 | 94.9 ± 3.7%  | 9                       | 92.4 ± 0.6%           | 96.8 ± 1.7% (Florida)        |
| 2005 | 94.5 ± 3.9%  | 14                      | 92.9 ± 0.6%           | 97.9 ± 2.0% (Massachusetts)  |
| 2006 | 94.8 ± 3.7%  | 17                      | 93.3 ± 0.6%           | 97.8 ± 1.6% (Rhode Island)   |
| 2007 | 92.7 ± 4.1%  | 29                      | 92.7 ± 0.7%           | 98.6 ± 1.5% (New Hampshire)  |
| 2008 | 93.5 ± 3.3%  | 25                      | 93.5 ± 0.7%           | 98.1 ± 1.6% (Connecticut)    |
| 2009 | 95.1 ± 3.1%  | 12                      | 92.4 ± 0.7%           | 98.8 ± 1.5% (Rhode Island)   |
| 2010 | 93.7 ± 3.8%  | 17                      | 91.8 ± 1.5%           | 98.3 ± 1.5% (North Dakota)   |
| 2011 | 89.4 ± 4.7%  | 37                      | 91.1 ± 0.7%           | 97.1 ± 1.7% (Louisiana)      |
| 2012 | 93.7 ± 3.4%  | 6                       | 89.7 ± 0.9%           | 96.3 ± 3.0% (Georgia)        |
| 2013 | 96.5 ± 2.5%  | 2                       | 90.8 ± 1.0%           | 96.7 ± 2.3% (Rhode Island)   |
| 2014 | 91.6 ± 5.3%  | 22                      | 91.6 ± 0.9%           | 97.6 ± 1.8% (Louisiana)      |
| 2015 | 96.3 ± 2.1%  | 2                       | 92.6 ± 0.7%           | 97.3 ± 2.3% (Connecticut)    |
| 2016 | 97.4 ± 1.9%  | 1                       | 90.5 ± 1.1%           | 97.4 ± 1.9% (Iowa)           |
| 2017 | 95.2 ± 3.3%  | 5                       | 91.4 ± 0.9%           | 97.7 ± 1.6% (North Dakota)   |

Data compiled by the ALC from National Immunization Surveys, 1995-2017<sup>1</sup>,  
<https://www.cdc.gov/vaccines/imz-managers/coverage/childvaxview/data-reports/hepb/index.html>

---

## GRAPH:

### Percentage of Infants Receiving 1 Dose of Hepatitis B Vaccine within 2 Days of Birth



Data compiled by the ALC from National Immunization Surveys, 1995-2017<sup>1</sup>, <https://www.cdc.gov/vaccines/imz-managers/coverage/childvaxview/data-reports/hepb/index.html>

## HEPATITIS B BIRTH DOSE VACCINATION COVERAGE

1 or more dose among infants within 3 days of birth

|      | Percentage of infants receiving |                               |                                | Rank among other states according to |                               |                               |
|------|---------------------------------|-------------------------------|--------------------------------|--------------------------------------|-------------------------------|-------------------------------|
|      | 1 dose within 1 day of birth*   | 1 dose within 2 days of birth | 1 dose within 3 days of birth* | 1 dose within 1 day of birth         | 1 dose within 2 days of birth | 1 dose within 3 days of birth |
| 2003 |                                 | 21.6 ± 6.0%                   |                                | N/A                                  | 46                            | N/A                           |
| 2004 |                                 | 21.9 ± 6.7%                   |                                | N/A                                  | 47                            | N/A                           |
| 2005 |                                 | 24.7 ± 7.1%                   |                                | N/A                                  | 46                            | N/A                           |
| 2006 | 20.2 ± 6.8%                     | 22.1 ± 6.9%                   | 23.1 ± 7.0%                    | 47                                   | 47                            | 48                            |
| 2007 | 19.5 ± 5.7%                     | 23.1 ± 6.1%                   | 23.7 ± 6.1%                    | 48                                   | 49                            | 49                            |
| 2008 | 20.8 ± 5.3%                     | 27.9 ± 5.8%                   | 31.4 ± 6.1%                    | 49                                   | 49                            | 48                            |
| 2009 | 36.4 ± 7.1%                     | 46.1 ± 7.2%                   | 46.7 ± 7.2%                    | 46                                   | 46                            | 46                            |
| 2010 | 44.3 ± 7.2%                     | 50.5 ± 7.2%                   | 52.3 ± 7.2%                    | 43                                   | 46                            | 47                            |
| 2011 | 57.1 ± 7.2%                     | 68.1 ± 6.6%                   | 69.4 ± 6.6%                    | 35                                   | 31                            | 33                            |
| 2012 | 56.2 ± 7.5%                     | 67.0 ± 7.5%                   | 68.3 ± 7.5%                    | 39                                   | 37                            | 38                            |
| 2013 | 65.0 ± 8.4%                     | 76.4 ± 7.6%                   | 79.5 ± 7.2%                    | 24                                   | 30                            | 15                            |
| 2014 | 59.3 ± 8.9%                     | 67.5 ± 8.5%                   | 68.2 ± 8.5%                    | 38                                   | 41                            | 41                            |
| 2015 | 67.1 ± 6.1%                     | 75.2 ± 5.6%                   | 78.2 ± 5.3%                    | 22                                   | 19                            | 14                            |
| 2016 | 63.7 ± 6.3%                     | 69.9 ± 6.2%                   | 71.4 ± 6.1%                    | 28                                   | 32                            | 34                            |
| 2017 | 74.3 ± 6.7%                     | 77.9 ± 6.2%                   | 78.0 ± 6.2%                    | 7                                    | 4                             | 4                             |

\*No data available 2003-2005

### 2017 U.S. NATIONAL AVERAGE

Day 1: 65.7 ± 1.6%  
Day 2: 72.0 ± 1.6%  
Day 3: 73.6 ± 1.6%

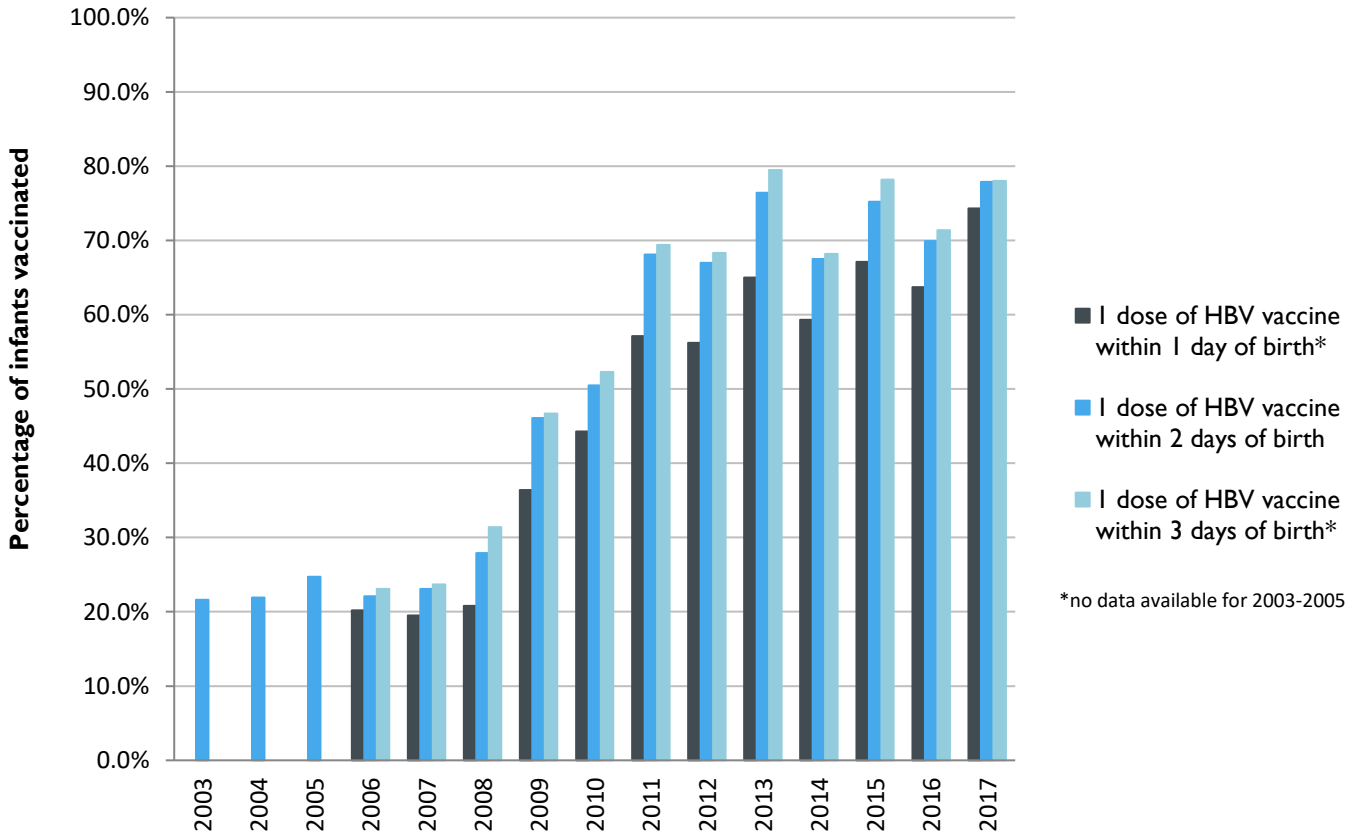
### 2017 HIGHEST BIRTH DOSE COVERAGE

Day 1: 82.0 ± 5.7% (Kentucky)  
Day 2: 84.1 ± 5.6% (Kentucky)  
Day 3: 84.1 ± 5.6% (Kentucky)

Data compiled by the ALC from National Immunization Surveys, 1995-2017<sup>1</sup>,  
<https://www.cdc.gov/vaccines/imz-managers/coverage/childvaxview/data-reports/hepb/index.html>

## GRAPH:

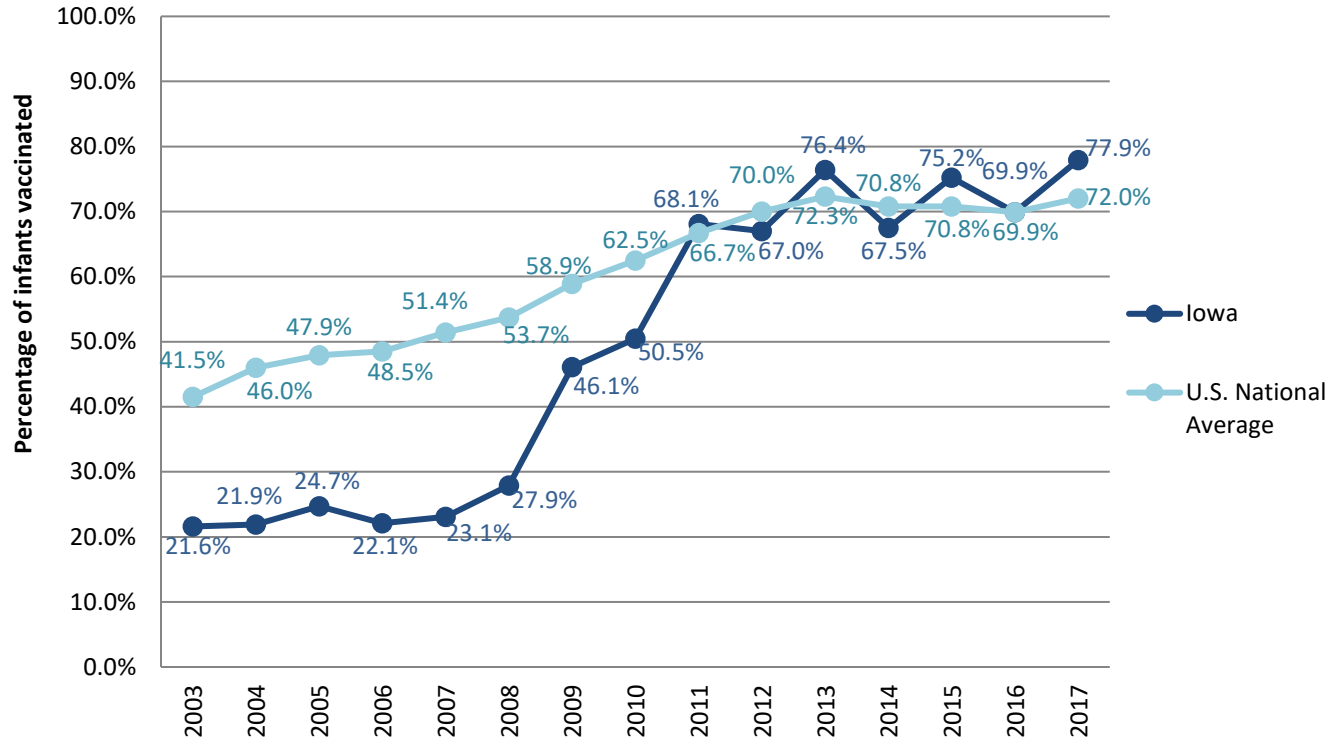
Estimated Vaccination Coverage for Hepatitis B Vaccine among Children from Birth to 3 Days of Age in Iowa



Data compiled by the ALC from National Immunization Surveys, 1995-2017<sup>1</sup>,  
<https://www.cdc.gov/vaccines/imz-managers/coverage/childvaxview/data-reports/hepb/index.html>

## GRAPH:

### Percentage of Infants Receiving 1 Dose of Hepatitis B Vaccine within 2 Days of Birth



Data compiled by the ALC from National Immunization Surveys, 1995-2017<sup>1</sup>,  
<https://www.cdc.gov/vaccines/imz-managers/coverage/childvaxview/data-reports/hepb/index.html>

<sup>1</sup> The data from the National Immunization Surveys constitute a composite of data from children who were 19-35 months of age at the time of the survey. Therefore, the data might reflect a different estimate from the states' own birth cohort data.