

WASHINGTON

CONTACT THE STAFF

COORDINATOR:

Tawney Harper (acting)
Email: tawney.harper@doh.wa.gov
Fax: 360-236-3590

ADDRESS:

Washington State Department of Health
PO Box 47843
Olympia, WA 98504

SCREENING REQUIREMENTS

Does the jurisdiction require screening of pregnant women for hepatitis B infection or hepatitis B surface antigen (HBsAg)?

No

Does the jurisdiction specifically require reporting of positive HBsAg status in pregnant women?

Yes - Wash. Admin. Code § 246-101-101, and Wash. Admin. Code § 246-101-301

COMPLETION OF HEPATITIS B VACCINATION SERIES

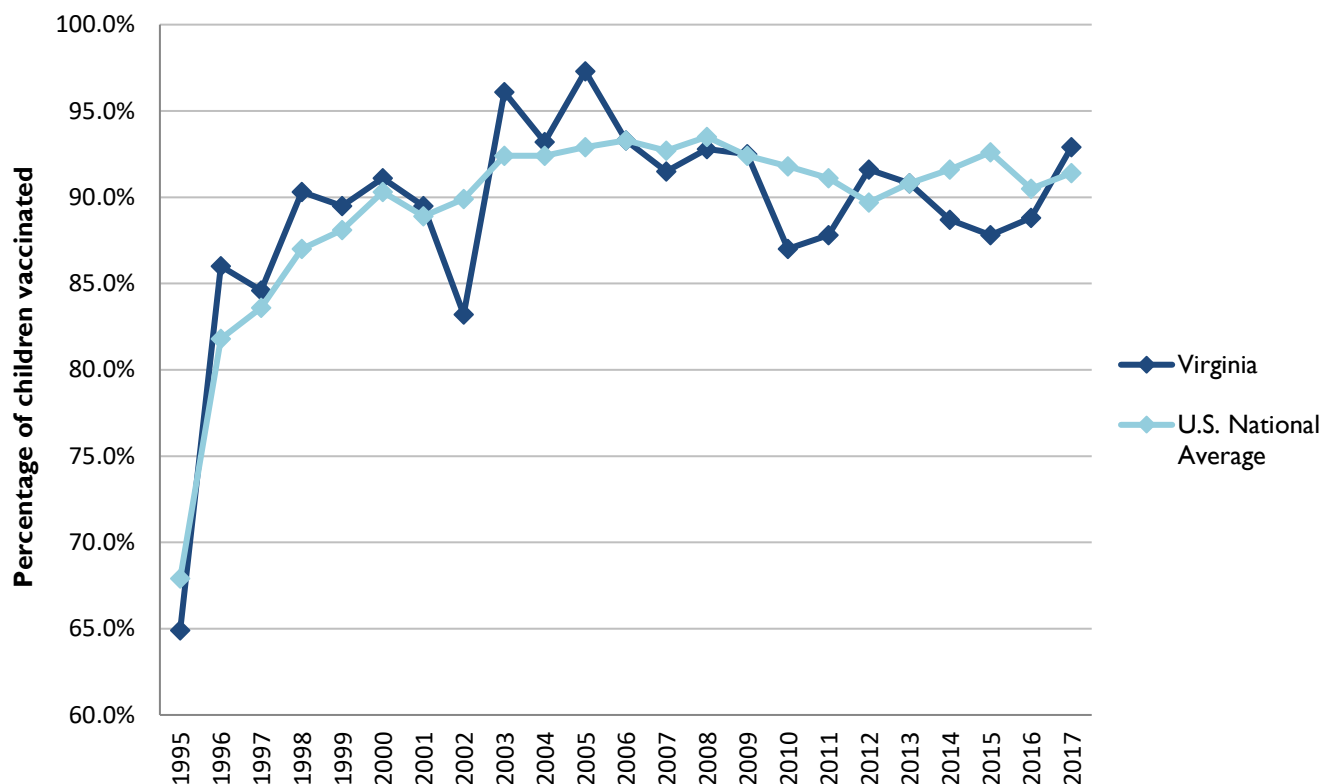
3 or more doses among children 19-35 months of age

	Percentage of children 19-35 months of age receiving 3 or more doses	Rank among other states	U.S. National Average	#1 ranked state and coverage
1995	66.1 ± 5.4%	27	67.9 ± 1.3%	88.5 ± 5.4% (South Carolina)
1996	80.6 ± 4.1%	27	81.8 ± 0.9%	95.8 ± 2.2% (South Carolina)
1997	78.3 ± 3.9%	48	83.6 ± 0.8%	91.6 ± 4.2% (New Jersey)
1998	81.3 ± 3.7%	48	87.0 ± 0.7%	94.1 ± 2.7% (South Carolina)
1999	85.5 ± 3.4%	41	88.1 ± 0.7%	94.0 ± 3.1% (Rhode Island)
2000	89.5 ± 2.8%	32	90.3 ± 0.6%	96.4 ± 1.9% (Rhode Island)
2001	86.0 ± 3.4%	40	88.9 ± 0.7%	95.8 ± 2.2% (Rhode Island)
2002	84.9 ± 4.0%	49	89.9 ± 0.7%	97.0 ± 2.0% (Rhode Island)
2003	91.2 ± 2.8%	34	92.4 ± 0.6%	98.2 ± 1.4% (Connecticut)
2004	88.7 ± 3.3%	47	92.4 ± 0.6%	96.8 ± 1.7% (Florida)
2005	87.4 ± 3.7%	46	92.9 ± 0.6%	97.9 ± 2.0% (Massachusetts)
2006	86.7 ± 3.5%	50	93.3 ± 0.6%	97.8 ± 1.6% (Rhode Island)
2007	85.0 ± 4.7%	50	92.7 ± 0.7%	98.6 ± 1.5% (New Hampshire)
2008	88.8 ± 3.9%	49	93.5 ± 0.7%	98.1 ± 1.6% (Connecticut)
2009	88.6 ± 3.6%	45	92.4 ± 0.7%	98.8 ± 1.5% (Rhode Island)
2010	90.8 ± 3.3%	36	91.8 ± 0.7%	98.3 ± 1.5% (North Dakota)
2011	86.1 ± 5.2%	48	91.1 ± 0.7%	97.1 ± 1.7% (Louisiana)
2012	86.3 ± 5.2%	46	89.7 ± 0.9%	96.3 ± 3.0% (Georgia)
2013	89.0 ± 5.9%	37	90.8 ± 1.0%	96.7 ± 2.3% (Rhode Island)
2014	85.8 ± 6.3%	49	91.6 ± 0.9%	97.6 ± 1.8% (Louisiana)
2015	91.4 ± 3.5%	37	92.6 ± 0.7%	97.3 ± 2.3% (Connecticut)
2016	89.5 ± 4.1%	38	90.5 ± 1.1%	97.4 ± 1.9% (Iowa)
2017	88.3 ± 4.8%	49	91.4 ± 0.9%	97.7 ± 1.6% (North Dakota)

Data compiled by the ALC from National Immunization Surveys, 1995-2017¹,
<https://www.cdc.gov/vaccines/imz-managers/coverage/childvaxview/data-reports/hepb/index.html>

GRAPH:

Percentage of Children 19-35 Months of Age Receiving 3 or More Doses of Hepatitis B Vaccine



Data compiled by the ALC from National Immunization Surveys, 1995-2017¹,
<https://www.cdc.gov/vaccines/imz-managers/coverage/childvaxview/data-reports/hepb/index.html>

HEPATITIS B BIRTH DOSE VACCINATION COVERAGE

1 or more dose among infants within 3 days of birth

	Percentage of infants receiving			Rank among other states according to		
	1 dose within 1 day of birth*	1 dose within 2 days of birth	1 dose within 3 days of birth*	1 dose within 1 day of birth	1 dose within 2 days of birth	1 dose within 3 days of birth
2003		57.0 ± 5.1%		N/A	18	N/A
2004		64.6 ± 4.8%		N/A	14	N/A
2005		66.4 ± 5.7%		N/A	11	N/A
2006	57.4 ± 5.0%	67.9 ± 4.6%	70.4 ± 4.6%	12	10	9
2007	66.0 ± 6.1%	72.7 ± 5.7%	75.0 ± 5.6%	7	7	9
2008	63.0 ± 5.9%	69.2 ± 5.7%	72.6 ± 5.3%	11	7	6
2009	61.4 ± 5.8%	68.9 ± 5.5%	70.1 ± 5.4%	15	13	13
2010	70.3 ± 5.2%	76.0 ± 5.0%	77.3 ± 4.9%	7	8	9
2011	63.9 ± 7.0%	71.0 ± 6.5%	71.7 ± 6.5%	23	21	24
2012	64.9 ± 7.1%	73.0 ± 6.5%	73.2 ± 6.5%	25	21	28
2013	62.2 ± 8.2%	71.4 ± 7.7%	75.0 ± 7.1%	31	35	30
2014	73.6 ± 7.0%	79.3 ± 6.2%	79.5 ± 6.2%	14	12	13
2015	64.4 ± 6.7%	70.5 ± 6.2%	71.2 ± 6.2%	28	28	35
2016	70.4 ± 6.0%	76.4 ± 5.5%	77.5 ± 5.4%	14	10	9
2017	63.5 ± 7.4%	66.9 ± 7.2%	67.4 ± 7.2%	38	43	43

*No data available 2003-2005

2017 U.S. NATIONAL AVERAGE

Day 1: 65.7 ± 1.6%
Day 2: 72.0 ± 1.6%
Day 3: 73.6 ± 1.6%

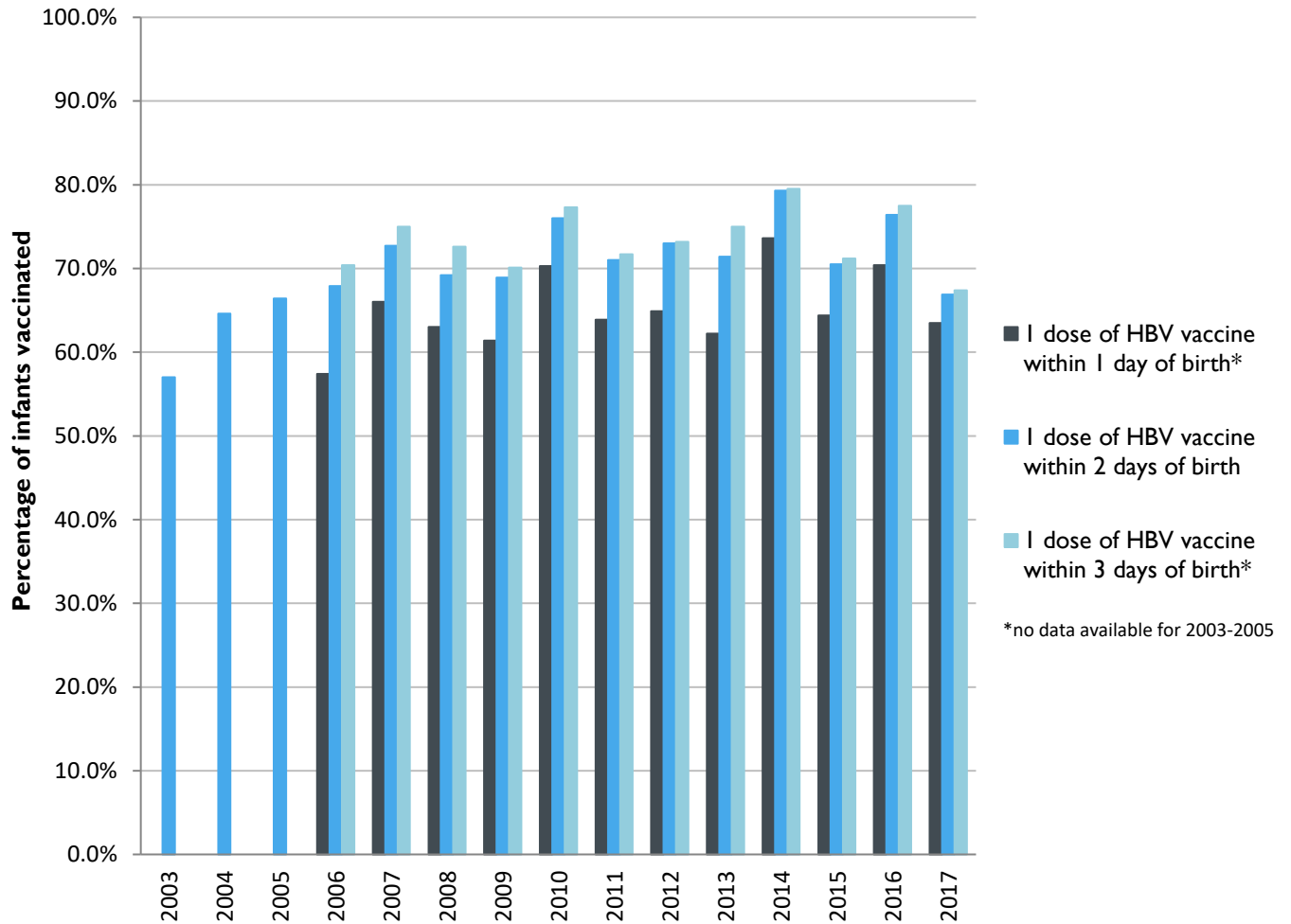
2017 HIGHEST BIRTH DOSE COVERAGE

Day 1: 82.0 ± 5.7% (Kentucky)
Day 2: 84.1 ± 5.6% (Kentucky)
Day 3: 84.1 ± 5.6% (Kentucky)

Data compiled by the ALC from National Immunization Surveys, 1995-2017¹,
<https://www.cdc.gov/vaccines/imz-managers/coverage/childvaxview/data-reports/hepb/index.html>

GRAPH:

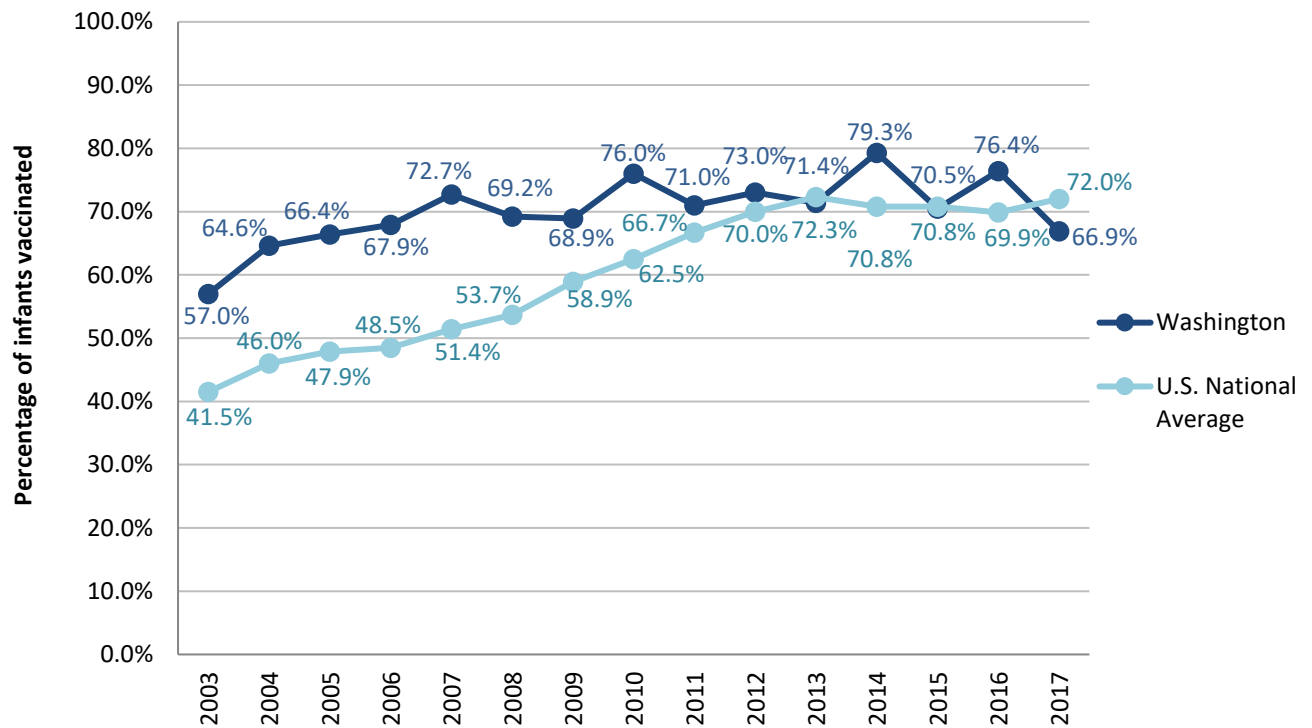
Estimated Vaccination Coverage for Hepatitis B Vaccine among Children from Birth to 3 Days of Age in Washington



Data compiled by the ALC from National Immunization Surveys, 1995-2017¹,
<https://www.cdc.gov/vaccines/imz-managers/coverage/childvaxview/data-reports/hepb/index.html>

GRAPH:

Percentage of Infants Receiving 1 Dose of Hepatitis B Vaccine within 2 Days of Birth



Data compiled by the ALC from National Immunization Surveys, 1995-2017¹,
<https://www.cdc.gov/vaccines/imz-managers/coverage/childvaxview/data-reports/hepb/index.html>

¹ The data from the National Immunization Surveys constitute a composite of data from children who were 19-35 months of age at the time of the survey. Therefore, the data might reflect a different estimate from the states' own birth cohort data.