

ARKANSAS

CONTACT THE STAFF

COORDINATOR:

Becky Snodgrass, RN
Email: Becky.Snodgrass@arkansas.gov
Phone: 501- 614-5300
Fax: 501-661-2300

ADDRESS:

AR Department of Health
4815 W. Markham St., Slot 48
Little Rock, AR 72205

SCREENING REQUIREMENTS

Does the jurisdiction require screening of pregnant women for hepatitis B infection or hepatitis B surface antigen (HBsAg)?

Yes - Ark. Code Ann. § 20-16-507, 007 26 CARR 001, and 016 24 CARR 006

Does the jurisdiction specifically require reporting of positive HBsAg status in pregnant women?

Yes - 007 26 CARR 001

COMPLETION OF HEPATITIS B VACCINATION SERIES

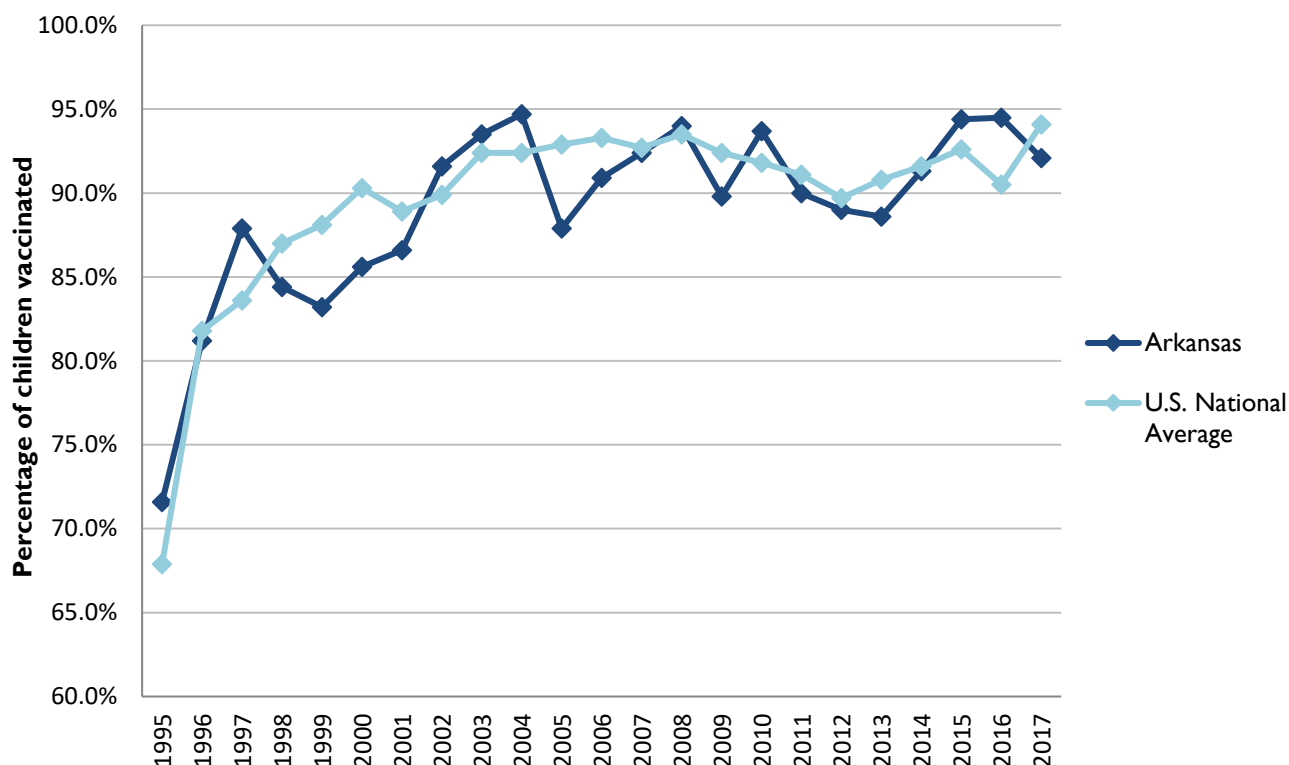
3 or more doses among children 19-35 months of age

	Percentage of children 19-35 months of age receiving 3 or more doses	Rank among other states	U.S. National Average	#1 ranked state and coverage
1995	71.6 ± 6.4%	17	67.9 ± 1.3%	88.5 ± 5.4% (South Carolina)
1996	81.2 ± 6.3%	25	81.8 ± 0.9%	95.8 ± 2.2% (South Carolina)
1997	87.9 ± 3.9%	8	83.6 ± 0.8%	91.6 ± 4.2% (New Jersey)
1998	84.4 ± 4.3%	38	87.0 ± 0.7%	94.1 ± 2.7% (South Carolina)
1999	83.2 ± 5.1%	46	88.1 ± 0.7%	94.0 ± 3.1% (Rhode Island)
2000	85.6 ± 4.3%	47	90.3 ± 0.6%	96.4 ± 1.9% (Rhode Island)
2001	86.6 ± 3.6%	38	88.9 ± 0.7%	95.8 ± 2.2% (Rhode Island)
2002	91.6 ± 3.0%	20	89.9 ± 0.7%	97.0 ± 2.0% (Rhode Island)
2003	93.5 ± 3.5%	19	92.4 ± 0.6%	98.2 ± 1.4% (Connecticut)
2004	94.7 ± 3.5%	13	92.4 ± 0.6%	96.8 ± 1.7% (Florida)
2005	87.9 ± 6.4%	45	92.9 ± 0.6%	97.9 ± 2.0% (Massachusetts)
2006	90.9 ± 5.6%	41	93.3 ± 0.6%	97.8 ± 1.6% (Rhode Island)
2007	92.4 ± 3.9%	32	92.7 ± 0.7%	98.6 ± 1.5% (New Hampshire)
2008	94.3 ± 3.1%	20	93.5 ± 0.7%	98.1 ± 1.6% (Connecticut)
2009	89.8 ± 3.9%	39	92.4 ± 0.7%	98.8 ± 1.5% (Rhode Island)
2010	93.7 ± 3.5%	18	91.8 ± 1.5%	98.3 ± 1.5% (North Dakota)
2011	90.0 ± 4.3%	35	91.1 ± 0.7%	97.1 ± 1.7% (Louisiana)
2012	89.0 ± 4.8%	34	89.7 ± 0.9%	96.3 ± 3.0% (Georgia)
2013	88.6 ± 6.2%	34	90.8 ± 1.0%	96.7 ± 2.3% (Rhode Island)
2014	91.3 ± 4.3%	35	91.6 ± 0.9%	97.6 ± 1.8% (Louisiana)
2015	94.4 ± 3.1%	12	92.6 ± 0.7%	97.3 ± 2.3% (Connecticut)
2016	94.5 ± 2.9%	9	90.5 ± 1.1%	97.4 ± 1.9% (Iowa)
2017	92.1 ± 4.4%	23	91.4 ± 0.9%	97.7 ± 1.6% (North Dakota)

Data compiled by the ALC from National Immunization Surveys, 1995-2017¹,
<https://www.cdc.gov/vaccines/imz-managers/coverage/childvaxview/data-reports/hepb/index.html>

GRAPH:

Percentage of Children 19-35 Months of Age Receiving 3 or More Doses of Hepatitis B Vaccine



Data compiled by the ALC from National Immunization Surveys, 1995-2017¹, <https://www.cdc.gov/vaccines/imz-managers/coverage/childvaxview/data-reports/hepb/index.html>

HEPATITIS B BIRTH DOSE VACCINATION COVERAGE

1 or more dose among infants within 3 days of birth

	Percentage of infants receiving			Rank among other states according to		
	1 dose within 1 day of birth*	1 dose within 2 days of birth	1 dose within 3 days of birth*	1 dose within 1 day of birth	1 dose within 2 days of birth	1 dose within 3 days of birth
2003		70.5 ± 7.8%		N/A	5	N/A
2004		82.6 ± 6.5%		N/A	1	N/A
2005		77.4 ± 7.4%		N/A	4	N/A
2006	65.0 ± 9.3%	71.6 ± 8.8%	72.5 ± 8.8%	6	7	8
2007	73.0 ± 6.0%	75.9 ± 5.6%	76.3 ± 5.6%	2	4	5
2008	69.2 ± 6.6%	73.1 ± 6.6%	73.8 ± 6.6%	3	5	5
2009	69.8 ± 6.7%	70.4 ± 6.7%	70.7 ± 6.7%	6	10	11
2010	76.5 ± 7.8%	81.9 ± 6.9%	81.9 ± 6.9%	3	2	5
2011	80.1 ± 5.2%	81.9 ± 5.0%	82.4 ± 5.0%	1	2	2
2012	78.5 ± 6.8%	81.2 ± 6.5%	81.7 ± 6.5%	1	6	7
2013	74.4 ± 7.9%	79.2 ± 7.4%	79.7 ± 7.3%	7	13	14
2014	73.8 ± 7.8%	76.4 ± 7.5%	76.4 ± 7.5%	13	21	23
2015	79.0 ± 6.4%	80.6 ± 6.2%	80.6 ± 6.2%	2	4	8
2016	72.5 ± 6.9%	75.2 ± 6.6%	75.2 ± 6.6%	5	14	18
2017	79.4 ± 6.1	79.8 ± 6.1%	80.2 ± 6%	3	6	9

*No data available 2003-2005

2017 U.S. NATIONAL AVERAGE

Day 1: 65.7 ± 1.6%
Day 2: 72.0 ± 1.6%
Day 3: 73.6 ± 1.6%

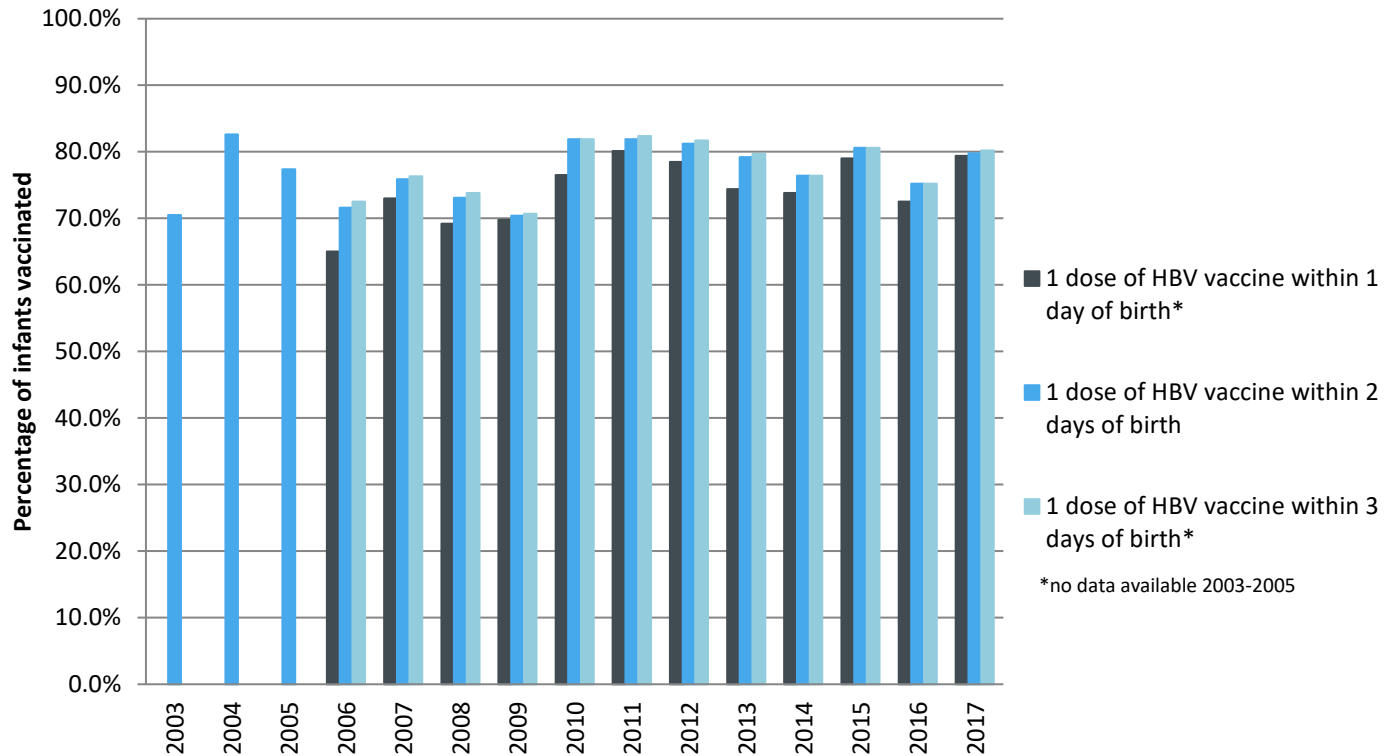
2017 HIGHEST BIRTH DOSE COVERAGE

Day 1: 82.0 ± 5.7% (Kentucky)
Day 2: 84.1 ± 5.6% (Kentucky)
Day 3: 84.1 ± 5.6% (Kentucky)

Data compiled by the ALC from National Immunization Surveys, 1995-2017¹,
<https://www.cdc.gov/vaccines/imz-managers/coverage/childvaxview/data-reports/hepb/index.html>

GRAPH:

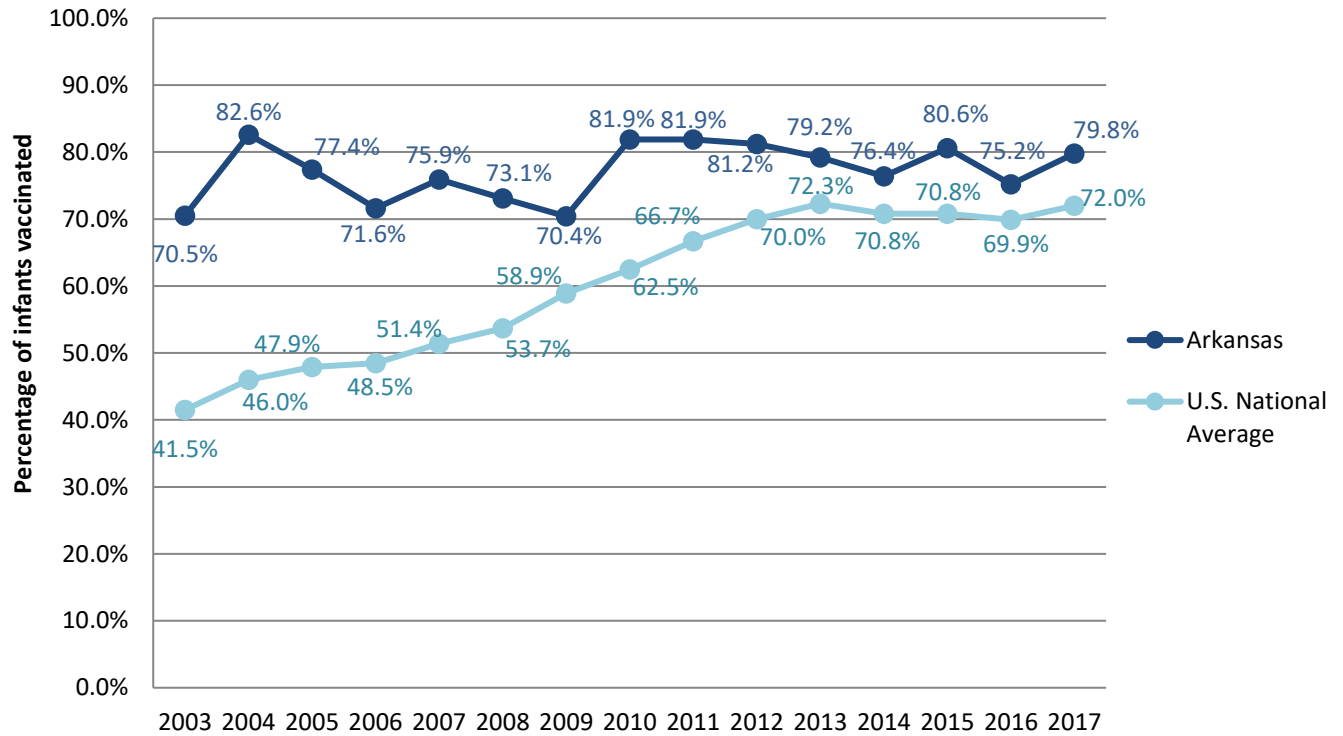
Estimated Vaccination Coverage for Hepatitis B Vaccine among Children from Birth to 3 Days of Age in Arkansas



Data compiled by the ALC from National Immunization Surveys, 1995-2017¹,
<https://www.cdc.gov/vaccines/imz-managers/coverage/childvaxview/data-reports/hepb/index.html>

GRAPH:

Percentage of Infants Receiving 1 Dose of Hepatitis B Vaccine within 2 Days of Birth



Data compiled by the ALC from National Immunization Surveys, 1995-2017¹,
<https://www.cdc.gov/vaccines/imz-managers/coverage/childvaxview/data-reports/hepb/index.html>

¹ The data from the National Immunization Surveys constitute a composite of data from children who were 19-35 months of age at the time of the survey. Therefore, the data might reflect a different estimate from the states' own birth cohort data.