

COLORADO

CONTACT THE STAFF

COORDINATOR:

Briana Sprague
Email: briana.sprague@state.co.us
Phone: 303-692-2761
Fax: 303-759-5257

ADDRESS:

Colorado Dept. of Public Health & Environ.
Immunization Program
4300 Cherry Creek Drive
Denver, CO 80246-1530

SCREENING REQUIREMENTS

Does the jurisdiction require screening of pregnant women for hepatitis B infection or hepatitis B surface antigen (HBsAg)?

Yes - 4 CCR 739-1(5)(B)(3) (2007)

Does the jurisdiction specifically require reporting of positive HBsAg status in pregnant women?

No

COMPLETION OF HEPATITIS B VACCINATION SERIES

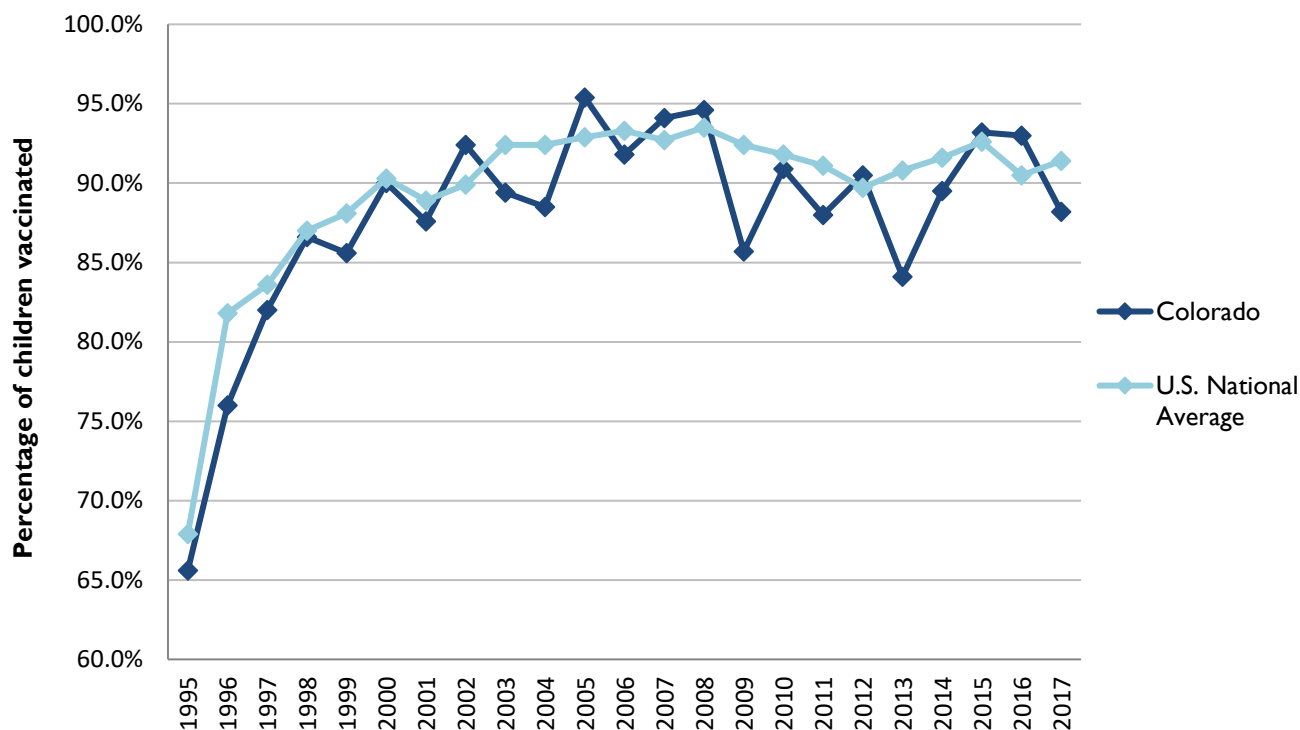
3 or more doses among children 19-35 months of age

	Percentage of children 19-35 months of age receiving 3 or more doses	Rank among other states	U.S. National Average	#1 ranked state and coverage
1995	65.6 ± 7.5%	28	67.9 ± 1.3%	88.5 ± 5.4% (South Carolina)
1996	76.0 ± 5.5%	41	81.8 ± 0.9%	95.8 ± 2.2% (South Carolina)
1997	82.0 ± 4.8%	37	83.6 ± 0.8%	91.6 ± 4.2% (New Jersey)
1998	86.6 ± 4.5%	29	87.0 ± 0.7%	94.1 ± 2.7% (South Carolina)
1999	85.6 ± 4.5%	40	88.1 ± 0.7%	94.0 ± 3.1% (Rhode Island)
2000	90.0 ± 3.8%	29	90.3 ± 0.6%	96.4 ± 1.9% (Rhode Island)
2001	87.6 ± 3.6%	32	88.9 ± 0.7%	95.8 ± 2.2% (Rhode Island)
2002	92.4 ± 3.3%	14	89.9 ± 0.7%	97.0 ± 2.0% (Rhode Island)
2003	89.4 ± 4.1%	44	92.4 ± 0.6%	98.2 ± 1.4% (Connecticut)
2004	88.5 ± 4.5%	48	92.4 ± 0.6%	96.8 ± 1.7% (Florida)
2005	95.4 ± 2.2%	7	92.9 ± 0.6%	97.9 ± 2.0% (Massachusetts)
2006	91.8 ± 5.3%	37	93.3 ± 0.6%	97.8 ± 1.6% (Rhode Island)
2007	94.1 ± 4.7%	21	92.7 ± 0.7%	98.6 ± 1.5% (New Hampshire)
2008	94.6 ± 3.2%	17	93.5 ± 0.7%	98.1 ± 1.6% (Connecticut)
2009	85.7 ± 6.3%	49	92.4 ± 0.7%	98.8 ± 1.5% (Rhode Island)
2010	90.9 ± 3.4%	34	91.8 ± 1.5%	98.3 ± 1.5% (North Dakota)
2011	89.4 ± 4.7%	37	91.1 ± 0.7%	97.1 ± 1.7% (Louisiana)
2012	90.5 ± 4.5%	20	89.7 ± 0.9%	96.3 ± 3.0% (Georgia)
2013	84.1 ± 5.6%	24	90.8 ± 1.0%	96.7 ± 2.3% (Rhode Island)
2014	89.5 ± 4.9%	26	91.6 ± 0.9%	97.6 ± 1.8% (Louisiana)
2015	93.2 ± 3.3%	42	92.6 ± 0.7%	97.3 ± 2.3% (Connecticut)
2016	93.0 ± 4.2%	21	90.5 ± 1.1%	97.4 ± 1.9% (Iowa)
2017	88.2 ± 4.7%	50	91.4 ± 0.9%	97.7 ± 1.6% (North Dakota)

Data compiled by the ALC from National Immunization Surveys, 1995-2017¹,
<https://www.cdc.gov/vaccines/imz-managers/coverage/childvaxview/data-reports/hepb/index.html>

GRAPH:

Percentage of Children 19-35 Months of Age Receiving 3 or More Doses of Hepatitis B Vaccine



Data compiled by the ALC from National Immunization Surveys, 1995-2017¹,
<https://www.cdc.gov/vaccines/imz-managers/coverage/childvaxview/data-reports/hepb/index.html>

HEPATITIS B BIRTH DOSE VACCINATION COVERAGE

1 or more dose among infants within 3 days of birth

	Percentage of infants receiving			Rank among other states according to		
	1 dose within 1 day of birth*	1 dose within 2 days of birth	1 dose within 3 days of birth*	1 dose within 1 day of birth	1 dose within 2 days of birth	1 dose within 3 days of birth
2003		16.0 ± 5.1%		N/A	48	N/A
2004		20.9 ± 6.3%		N/A	48	N/A
2005		32.3 ± 5.9 %		N/A	41	N/A
2006	37.0 ± 9.2%	40.1 ± 9.0%	42.6 ± 9.1%	34	38	38
2007	41.3 ± 9.1%	46.6 ± 9.3%	48.9 ± 9.3%	35	37	37
2008	43.4 ± 8.8%	47.5 ± 8.9%	48.7 ± 8.9%	34	39	39
2009	44.8 ± 8.6%	51.3 ± 8.8%	52.5 ± 8.8%	38	39	39
2010	52.6 ± 7.2%	57.0 ± 7.0%	57.6 ± 7.0%	34	41	43
2011	51.6 ± 8.5%	57.2 ± 8.4%	57.8 ± 8.4%	42	44	46
2012	58.0 ± 8.8%	63.2 ± 8.4%	64.0 ± 8.4%	37	42	44
2013	57.7 ± 7.4%	59.0 ± 7.4%	60.2 ± 7.3%	40	47	45
2014	64.9 ± 6.7%	67.3 ± 6.6%	68.2 ± 6.6%	31	41	41
2015	70.8 ± 6.5%	72.0 ± 6.4%	73.1 ± 6.4%	15	25	29
2016	66.2 ± 8.6%	69.7 ± 8.3%	69.8 ± 8.3%	22	33	36
2017	71.5 ± 6.6%	73.5 ± 6.5%	73.9 ± 6.5%	17	28	29

*No data available 2003-2005

2017 U.S. NATIONAL AVERAGE

Day 1: 65.7 ± 1.6%
Day 2: 72.0 ± 1.6%
Day 3: 73.6 ± 1.6%

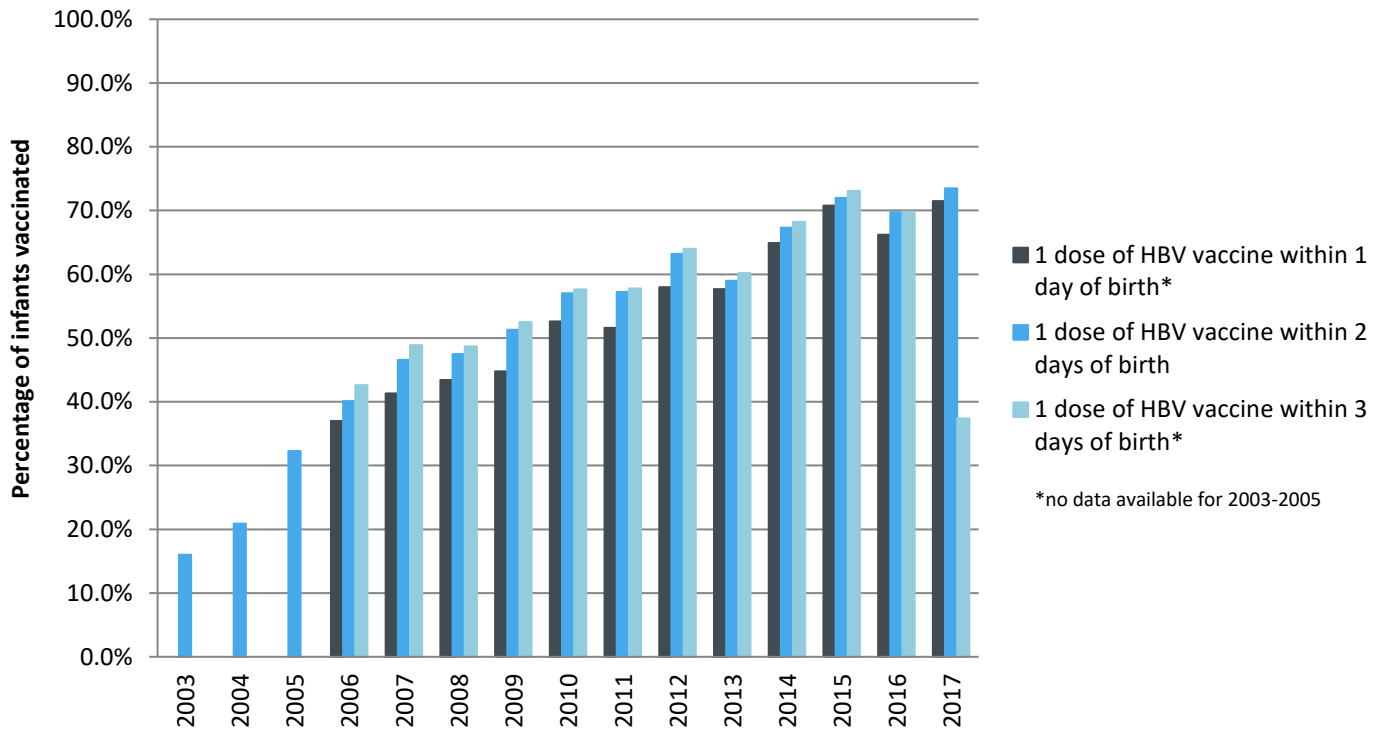
2017 HIGHEST BIRTH DOSE COVERAGE

Day 1: 82.0 ± 5.7% (Kentucky)
Day 2: 84.1 ± 5.6% (Kentucky)
Day 3: 84.1 ± 5.6% (Kentucky)

Data compiled by the ALC from National Immunization Surveys, 1995-2017¹,
<https://www.cdc.gov/vaccines/imz-managers/coverage/childvaxview/data-reports/hepb/index.html>

GRAPH:

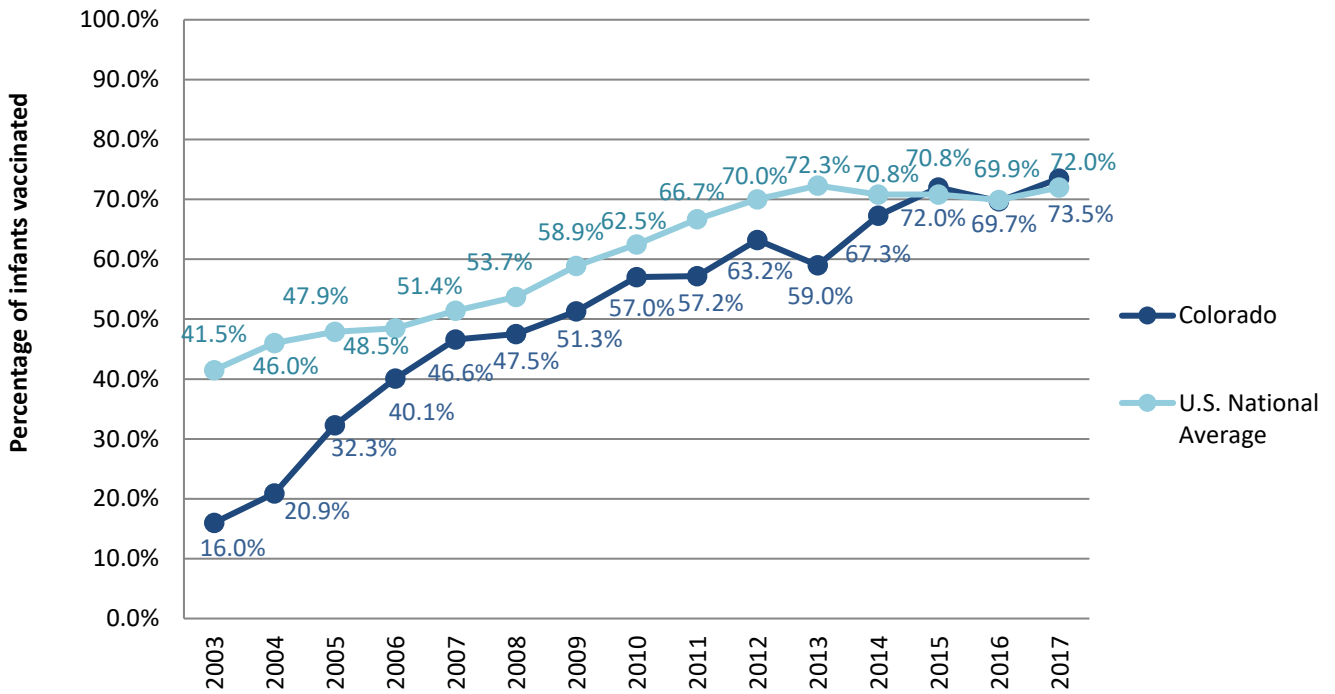
Estimated Vaccination Coverage for Hepatitis B Vaccine among Children from Birth to 3 Days of Age in Colorado



Data compiled by the ALC from National Immunization Surveys, 1995-2017¹,
<https://www.cdc.gov/vaccines/imz-managers/coverage/childvaxview/data-reports/hepb/index.html>

GRAPH:

Percentage of Infants Receiving 1 Dose of Hepatitis B Vaccine within 2 Days of Birth



Data compiled by the ALC from National Immunization Surveys, 1995-2017¹,
<https://www.cdc.gov/vaccines/imz-managers/coverage/childvaxview/data-reports/hepb/index.html>

¹ The data from the National Immunization Surveys constitute a composite of data from children who were 19-35 months of age at the time of the survey. Therefore, the data might reflect a different estimate from the states' own birth cohort data.