

# NORTH CAROLINA

## CONTACT THE STAFF

### COORDINATOR:

Mary J. Stanley, RN  
Email: mary.stanley@dhhs.nc.gov  
Phone: 919-707-5573  
Fax: 919-676-6147

Jenny Myers, MPH

Email: jenny.myers@dhhs.nc.gov  
Phone: 919-707-5558  
Fax: 919-676-6147

### ADDRESS:

North Carolina Department of Health and Human  
Services  
1917 Mail Service Center  
Raleigh, NC 27699-1917

## SCREENING REQUIREMENTS

Does the jurisdiction require screening of pregnant women for hepatitis B infection or hepatitis B surface antigen (HBsAg)?

**Yes** - N.C. Admin. Code tit. 10A, r. 41A.0203

Does the jurisdiction specifically require reporting of positive HBsAg status in pregnant women?

**Yes** - N.C. Admin. Code tit. 10, r. 41A.0101

## COMPLETION OF HEPATITIS B VACCINATION SERIES

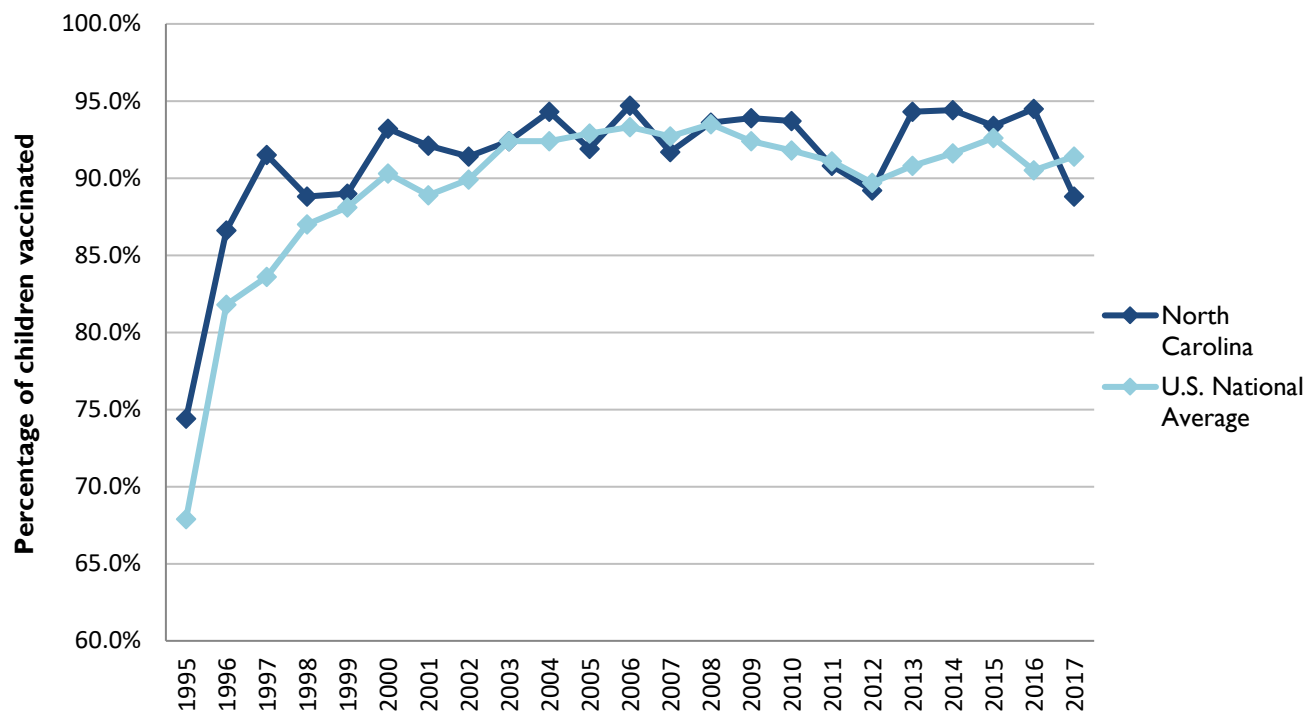
3 or more doses among children 19-35 months of age

	Percentage of children 19-35 months of age receiving 3 or more doses	Rank among other states	U.S. National Average	#1 ranked state and coverage
1995	74.4 ± 6.8%	11	67.9 ± 1.3%	88.5 ± 5.4% (South Carolina)
1996	86.6 ± 4.6%	9	81.8 ± 0.9%	95.8 ± 2.2% (South Carolina)
1997	91.5 ± 3.6%	2	83.6 ± 0.8%	91.6 ± 4.2% (New Jersey)
1998	88.8 ± 4.0%	18	87.0 ± 0.7%	94.1 ± 2.7% (South Carolina)
1999	89.0 ± 3.9%	27	88.1 ± 0.7%	94.0 ± 3.1% (Rhode Island)
2000	93.2 ± 2.9%	10	90.3 ± 0.6%	96.4 ± 1.9% (Rhode Island)
2001	92.1 ± 3.5%	6	88.9 ± 0.7%	95.8 ± 2.2% (Rhode Island)
2002	91.4 ± 4.1%	21	89.9 ± 0.7%	97.0 ± 2.0% (Rhode Island)
2003	92.4 ± 3.7%	24	92.4 ± 0.6%	98.2 ± 1.4% (Connecticut)
2004	94.3 ± 4.1%	15	92.4 ± 0.6%	96.8 ± 1.7% (Florida)
2005	91.9 ± 4.3%	29	92.9 ± 0.6%	97.9 ± 2.0% (Massachusetts)
2006	94.7 ± 3.4%	18	93.3 ± 0.6%	97.8 ± 1.6% (Rhode Island)
2007	91.7 ± 4.5%	39	92.7 ± 0.7%	98.6 ± 1.5% (New Hampshire)
2008	93.6 ± 3.8%	23	93.5 ± 0.7%	98.1 ± 1.6% (Connecticut)
2009	93.9 ± 3.5%	20	92.4 ± 0.7%	98.8 ± 1.5% (Rhode Island)
2010	93.7 ± 3.2%	19	91.8 ± 0.7%	98.3 ± 1.5% (North Dakota)
2011	90.8 ± 5.3%	27	91.1 ± 0.7%	97.1 ± 1.7% (Louisiana)
2012	89.2 ± 4.7%	31	89.7 ± 0.9%	96.3 ± 3.0% (Georgia)
2013	94.3 ± 3.6%	8	90.8 ± 1.0%	96.7 ± 2.3% (Rhode Island)
2014	94.4 ± 3.7%	13	91.6 ± 0.9%	97.6 ± 1.8% (Louisiana)
2015	93.4 ± 4.0%	24	92.6 ± 0.7%	97.3 ± 2.3% (Connecticut)
2016	94.5 ± 3.8%	9	90.5 ± 1.1%	97.4 ± 1.9% (Connecticut)
2017	88.8 ± 5.1%	48	91.4 ± 0.9%	97.7 ± 1.6% (North Carolina)

Data compiled by the ALC from National Immunization Surveys, 1995-2017<sup>1</sup>,  
<https://www.cdc.gov/vaccines/imz-managers/coverage/childvaxview/data-reports/hepb/index.html>

## GRAPH:

### Percentage of Children 19-35 Months of Age Receiving 3 or More Doses of Hepatitis B Vaccine



Data compiled by the ALC from National Immunization Surveys, 1995-2017<sup>1</sup>,  
<https://www.cdc.gov/vaccines/imz-managers/coverage/childvaxview/data-reports/hepb/index.html>

## HEPATITIS B BIRTH DOSE VACCINATION COVERAGE

1 or more dose among infants within 3 days of birth

	Percentage of infants receiving			Rank among other states according to		
	1 dose within 1 day of birth*	1 dose within 2 days of birth	1 dose within 3 days of birth*	1 dose within 1 day of birth	1 dose within 2 days of birth	1 dose within 3 days of birth
2003		75.1 ± 5.7%		N/A	2	N/A
2004		81.8 ± 5.3%		N/A	2	N/A
2005		80.3 ± 6.3%		N/A	2	N/A
2006	68.0 ± 6.9%	79.0 ± 6.1%	80.4 ± 6.1%	2	2	2
2007	70.2 ± 7.0%	79.1 ± 6.0%	81.9 ± 5.7%	4	1	1
2008	63.0 ± 6.6%	70.9 ± 6.3%	72.2 ± 6.3%	9	6	7
2009	65.9 ± 7.4%	75.1 ± 6.8%	76.6 ± 6.7%	9	6	5
2010	65.3 ± 6.3%	72.1 ± 6.0%	75.0 ± 5.8%	10	12	10
2011	69.4 ± 7.2%	74.5 ± 6.8%	75.0 ± 6.7%	14	15	16
2012	72.2 ± 6.3%	77.6 ± 6.0%	78.2 ± 5.9%	11	12	17
2013	77.0 ± 6.6%	81.5 ± 6.3%	82.1 ± 6.1%	3	4	6
2014	74.0 ± 8.0%	78.2 ± 7.3%	79.1 ± 7.2%	12	17	11
2015	74.0 ± 8.0%	78.2 ± 7.3%	81.3 ± 6.0%	12	17	5
2016	69.1 ± 7.6%	72.8 ± 7.4%	72.8 ± 7.4%	18	19	27
2017	74.9 ± 6.7%	77.5 ± 6.6%	77.7 ± 6.6%	9	13	18

\*No data available 2003-2005

### 2017 U.S. NATIONAL AVERAGE

Day 1: 65.7 ± 1.6%  
Day 2: 72.0 ± 1.6%  
Day 3: 73.6 ± 1.6%

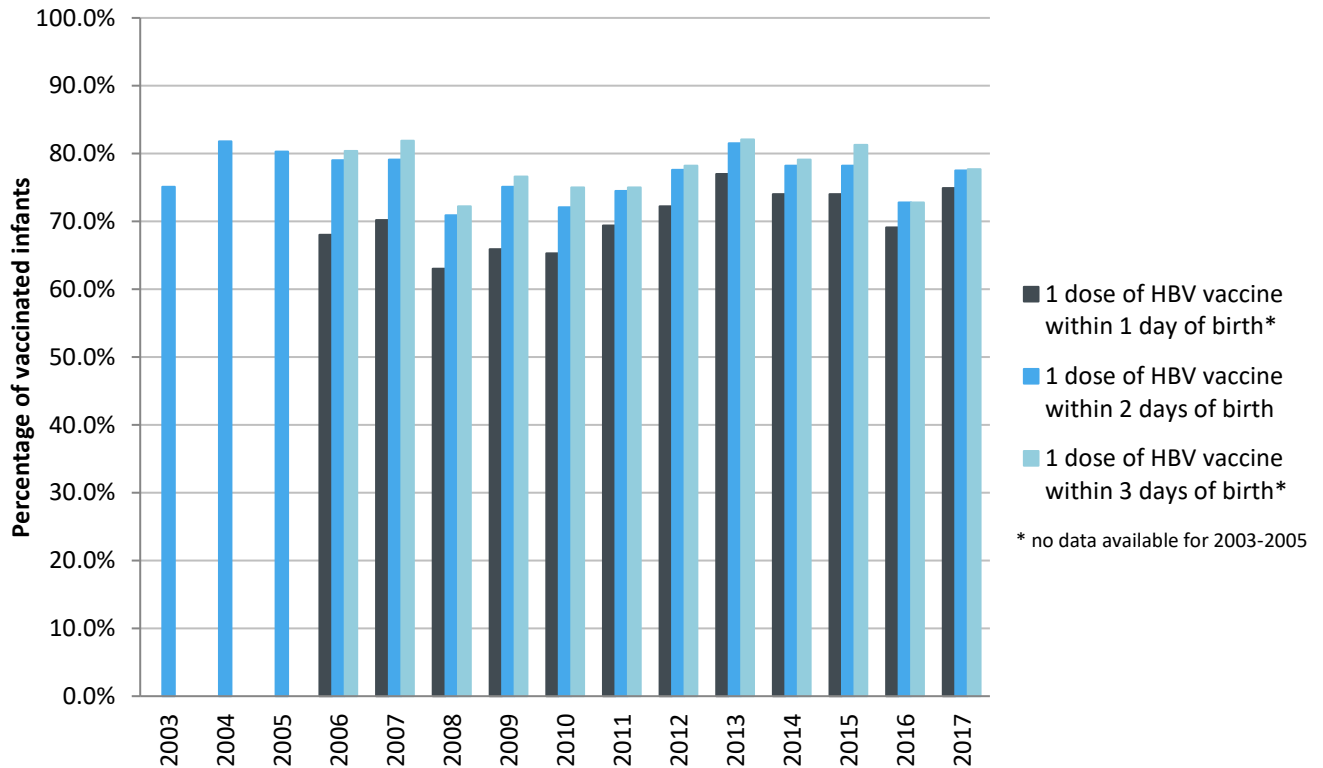
### 2017 HIGHEST BIRTH DOSE COVERAGE

Day 1: 82.0 ± 5.7% (Kentucky)  
Day 2: 84.1 ± 5.6% (Kentucky)  
Day 3: 84.1 ± 5.6% (Kentucky)

Data compiled by the ALC from National Immunization Surveys, 1995-2017<sup>1</sup>,  
<https://www.cdc.gov/vaccines/imz-managers/coverage/childvaxview/data-reports/hepb/index.html>

## GRAPH:

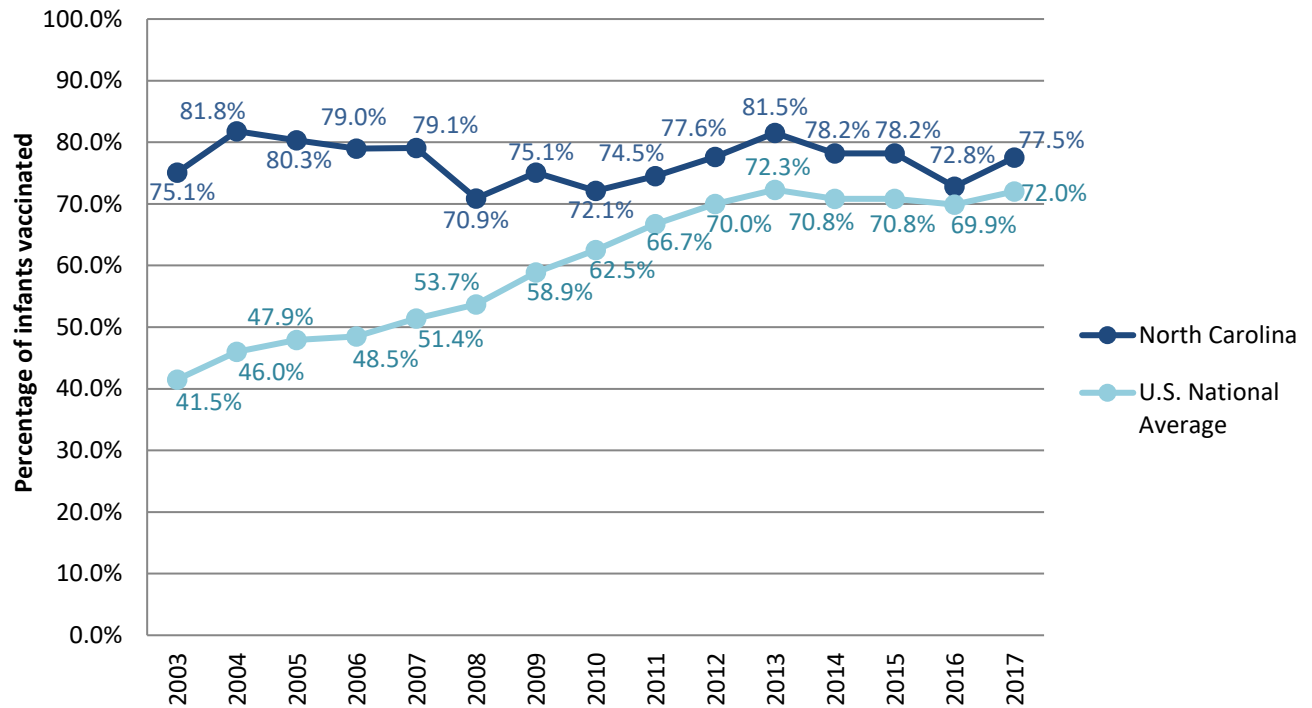
Estimated Vaccination Coverage for Hepatitis B Vaccine among Children from Birth to 3 Days of Age in North Carolina



Data compiled by the ALC from National Immunization Surveys, 1995-2017<sup>1</sup>,  
<https://www.cdc.gov/vaccines/imz-managers/coverage/childvaxview/data-reports/hepb/index.html>

## GRAPH:

### Percentage of Infants Receiving 1 Dose of Hepatitis B Vaccine within 2 Days of Birth



Data compiled by the ALC from National Immunization Surveys, 1995-2017<sup>1</sup>,  
<https://www.cdc.gov/vaccines/imz-managers/coverage/childvaxview/data-reports/hepb/index.html>

<sup>1</sup> The data from the National Immunization Surveys constitute a composite of data from children who were 19-35 months of age at the time of the survey. Therefore, the data might reflect a different estimate from the states' own birth cohort data.