

# MARYLAND

## CONTACT THE STAFF

### COORDINATOR:

Kali K. Neil, MPH  
Email: [kali.neil@maryland.gov](mailto:kali.neil@maryland.gov)  
Phone: 410-767-5716  
Fax: 410-333-5893

### ADDRESS:

Maryland Dept. of Health & Mental Hygiene  
Immunization Branch  
201 W. Preston St., Room 318  
Baltimore, MD 21201

## SCREENING REQUIREMENTS

Does the jurisdiction require screening of pregnant women for hepatitis B infection or hepatitis B surface antigen (HBsAg)?

No

Does the jurisdiction specifically require reporting of positive HBsAg status in pregnant women?

No

## COMPLETION OF HEPATITIS B VACCINATION SERIES

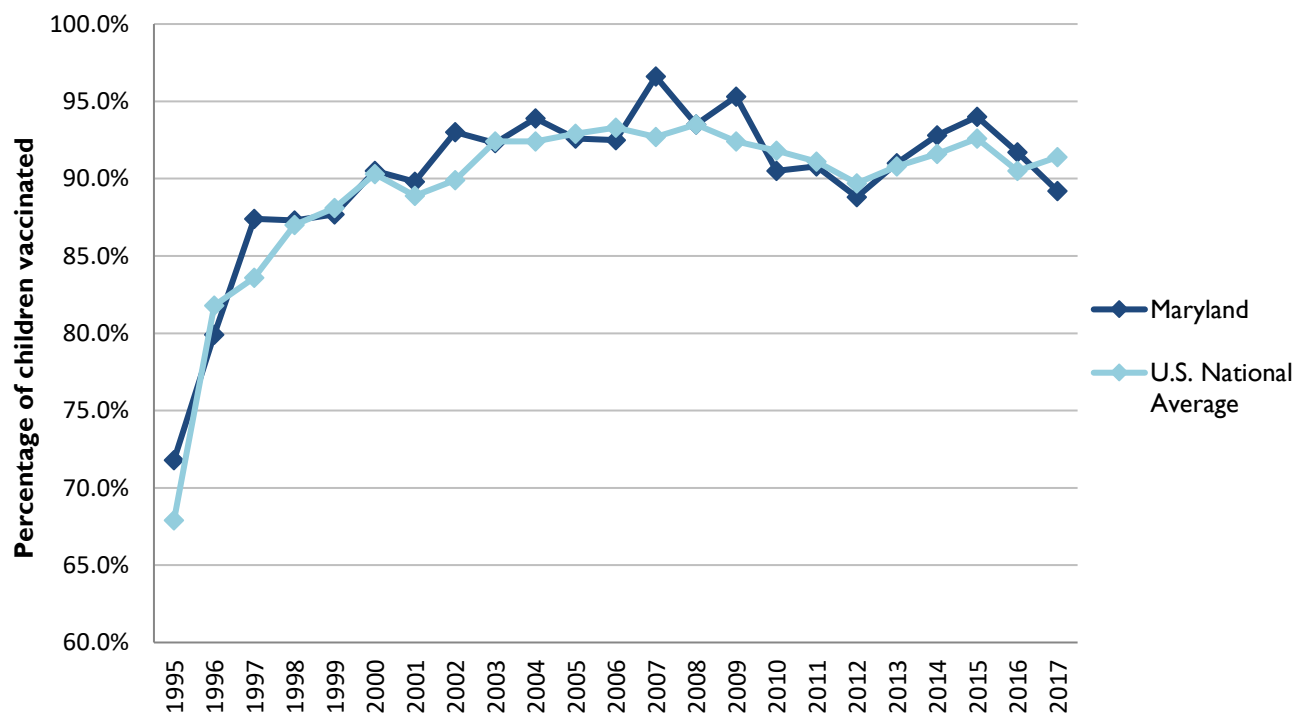
3 or more doses among children 19-35 months of age

	Percentage of children 19-35 months of age receiving 3 or more doses	Rank among other states	U.S. National Average	#1 ranked state and coverage
1995	71.8 ± 6.7%	16	67.9 ± 1.3%	88.5 ± 5.4% (South Carolina)
1996	79.9 ± 4.6%	32	81.8 ± 0.9%	95.8 ± 2.2% (South Carolina)
1997	87.4 ± 3.6%	13	83.6 ± 0.8%	91.6 ± 4.2% (New Jersey)
1998	87.3 ± 4.1%	24	87.0 ± 0.7%	94.1 ± 2.7% (South Carolina)
1999	87.7 ± 3.5%	33	88.1 ± 0.7%	94.0 ± 3.1% (Rhode Island)
2000	90.5 ± 3.4%	25	90.3 ± 0.6%	96.4 ± 1.9% (Rhode Island)
2001	89.8 ± 3.0%	20	88.9 ± 0.7%	95.8 ± 2.2% (Rhode Island)
2002	93.0 ± 2.8%	10	89.9 ± 0.7%	97.0 ± 2.0% (Rhode Island)
2003	92.3 ± 4.2%	25	92.4 ± 0.6%	98.2 ± 1.4% (Connecticut)
2004	93.9 ± 3.4%	20	92.4 ± 0.6%	96.8 ± 1.7% (Florida)
2005	92.6 ± 4.2%	25	92.9 ± 0.6%	97.9 ± 2.0% (Massachusetts)
2006	92.5 ± 4.1%	33	93.3 ± 0.6%	97.8 ± 1.6% (Rhode Island)
2007	96.6 ± 1.9%	7	92.7 ± 0.7%	98.6 ± 1.5% (New Hampshire)
2008	93.5 ± 3.2%	26	93.5 ± 0.7%	98.1 ± 1.6% (Connecticut)
2009	95.3 ± 3.1%	9	92.4 ± 0.7%	98.8 ± 1.5% (Rhode Island)
2010	90.5 ± 4.3%	37	91.8 ± 0.7%	98.3 ± 1.5% (North Dakota)
2011	90.8 ± 3.5%	30	91.1 ± 0.7%	97.1 ± 1.7% (Louisiana)
2012	88.8 ± 5.4%	36	89.7 ± 0.9%	96.3 ± 3.0% (Georgia)
2013	91.0 ± 5.5%	25	90.8 ± 1.0%	96.7 ± 2.3% (Rhode Island)
2014	92.8 ± 4.0%	19	91.6 ± 0.9%	97.6 ± 1.8% (Louisiana)
2015	94.0 ± 3.4%	16	92.6 ± 0.7%	97.3 ± 2.3% (Connecticut)
2016	91.7 ± 3.9%	26	90.5 ± 1.1%	97.4 ± 1.9% (Iowa)
2017	89.2 ± 6.2%	43	91.4 ± 0.9%	97.7 ± 1.6% (North Dakota)

Data compiled by the ALC from National Immunization Surveys, 1995-2017<sup>1</sup>, <https://www.cdc.gov/vaccines/imz-managers/coverage/childvaxview/data-reports/hepb/index.html>

## GRAPH:

### Percentage of Children 19-35 Months of Age Receiving 3 or More Doses of Hepatitis B Vaccine



Data compiled by the ALC from National Immunization Surveys, 1995-2017<sup>1</sup>,  
<https://www.cdc.gov/vaccines/imz-managers/coverage/childvaxview/data-reports/hepb/index.html>

## HEPATITIS B BIRTH DOSE VACCINATION COVERAGE

1 or more dose among infants within 3 days of birth

	Percentage of infants receiving			Rank among other states according to		
	1 dose within 1 day of birth*	1 dose within 2 days of birth	1 dose within 3 days of birth*	1 dose within 1 day of birth	1 dose within 2 days of birth	1 dose within 3 days of birth
2003		64.8 ± 6.5%		N/A	10	N/A
2004		63.0 ± 6.2%		N/A	18	N/A
2005		57.2 ± 7.5%		N/A	20	N/A
2006	48.4 ± 6.4%	64.8 ± 6.2%	68.7 ± 6.0%	24	14	13
2007	54.3 ± 7.1%	70.0 ± 6.2%	75.9 ± 5.6%	21	11	6
2008	43.4 ± 6.1%	62.4 ± 5.9%	67.8 ± 5.7%	35	25	13
2009	51.9 ± 8.1%	63.1 ± 8.0%	67.6 ± 7.8%	28	24	21
2010	55.8 ± 7.4%	67.5 ± 7.0%	69.0 ± 7.0%	27	18	22
2011	62.6 ± 5.9%	73.1 ± 5.5%	75.1 ± 5.5%	27	17	15
2012	63.6 ± 7.0%	71.1 ± 6.7%	73.3 ± 6.6%	28	25	27
2013	63.4 ± 8.7%	72.8 ± 8.1%	75.4 ± 7.7%	27	28	27
2014	66.5 ± 8.0%	80.6 ± 6.8%	83.5 ± 6.4%	28	8	4
2015	68.5 ± 8.0%	77.1 ± 6.6%	79.0 ± 6.6%	20	12	12
2016	64.9 ± 6.8%	72.1 ± 6.5%	74.0 ± 6.4%	26	21	22
2017	69.6 ± 8.1%	74.6 ± 7.8%	76.0 ± 7.7%	23	24	24

\*No data available 2003-2005

### 2017 U.S. NATIONAL AVERAGE

Day 1: 65.7 ± 1.6%  
Day 2: 72.0 ± 1.6%  
Day 3: 73.6 ± 1.6%

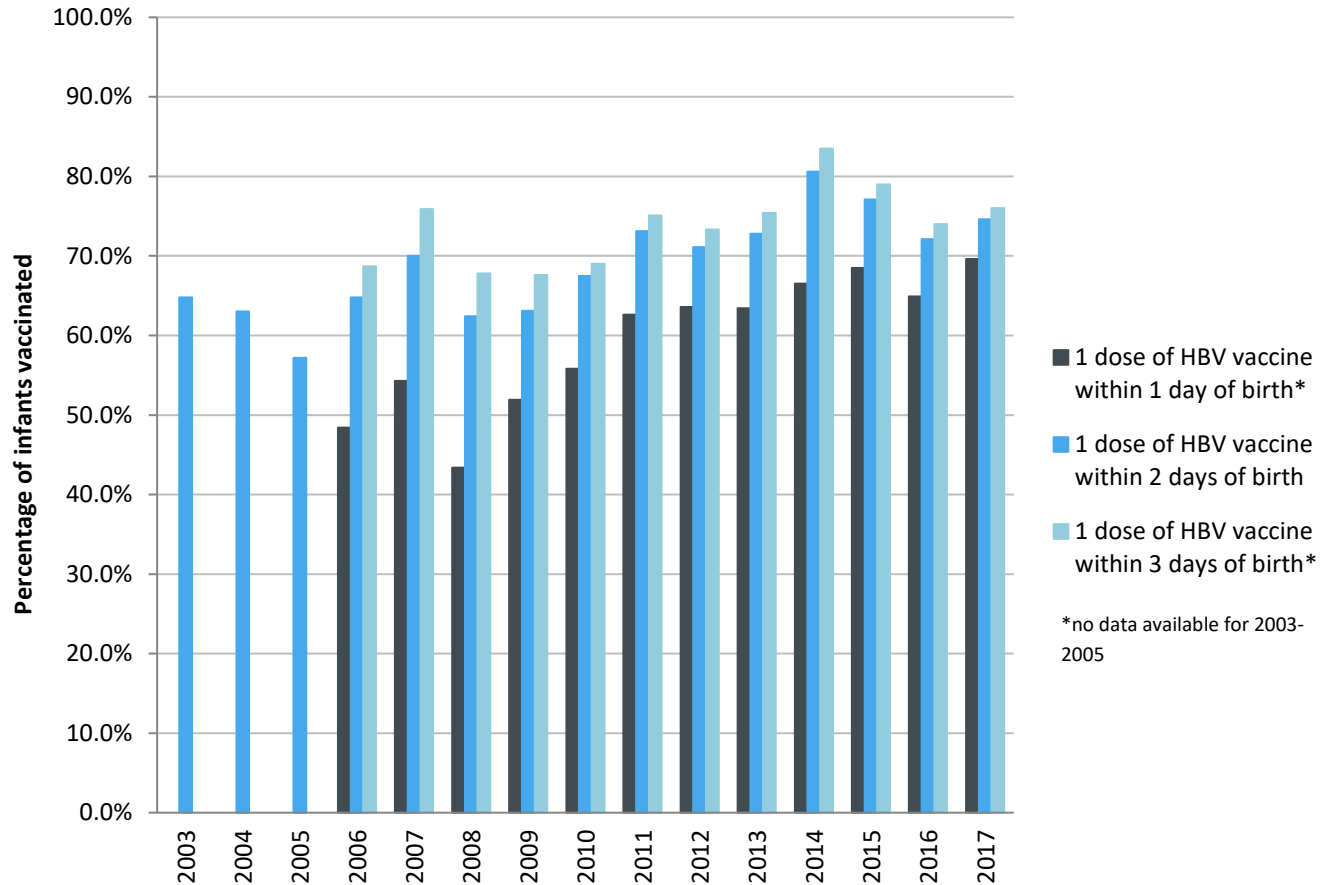
### 2017 HIGHEST BIRTH DOSE COVERAGE

Day 1: 82.0 ± 5.7% (Kentucky)  
Day 2: 84.1 ± 5.6% (Kentucky)  
Day 3: 84.1 ± 5.6% (Kentucky)

Data compiled by the ALC from National Immunization Surveys, 1995-2017<sup>1</sup>,  
<https://www.cdc.gov/vaccines/imz-managers/coverage/childvaxview/data-reports/hepb/index.html>

## GRAPH:

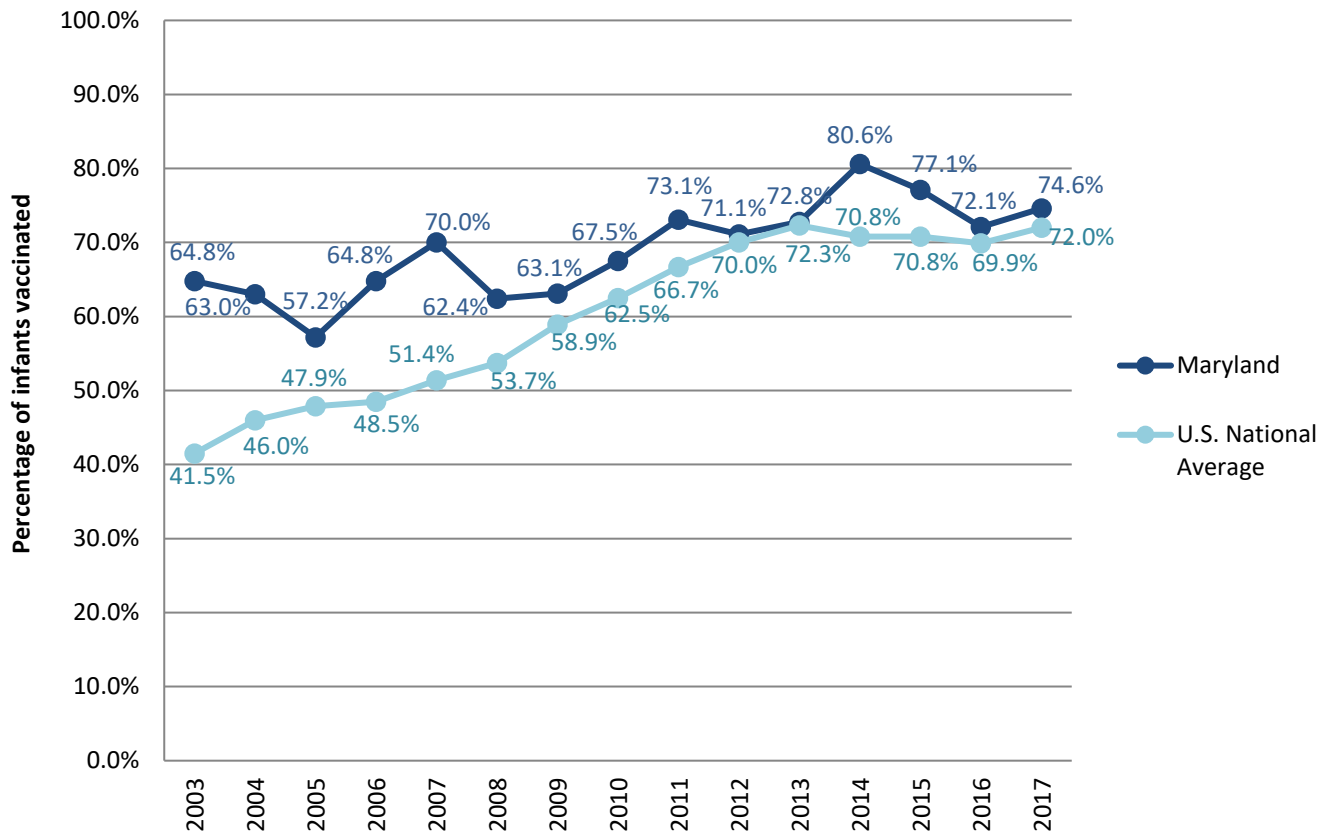
Estimated Vaccination Coverage for Hepatitis B Vaccine among Children from Birth to 3 Days of Age in Maryland



Data compiled by the ALC from National Immunization Surveys, 1995-2017<sup>1</sup>,  
<https://www.cdc.gov/vaccines/imz-managers/coverage/childvaxview/data-reports/hepb/index.html>

## GRAPH:

### Percentage of Infants Receiving 1 Dose of Hepatitis B Vaccine within 2 Days of Birth



Data compiled by the ALC from National Immunization Surveys, 1995-2017<sup>1</sup>, <https://www.cdc.gov/vaccines/imz-managers/coverage/childvaxview/data-reports/hepb/index.html>

<sup>1</sup> The data from the National Immunization Surveys constitute a composite of data from children who were 19-35 months of age at the time of the survey. Therefore, the data might reflect a different estimate from the states' own birth cohort data.