

DELAWARE

CONTACT THE STAFF

COORDINATOR:

Laura Gannon
Email: laura.gannon@state.de.us
Phone: 302-744-1159
Fax: 302-739-2555

ADDRESS:

Delaware Division of Public Health
Thomas Collins Building, Suite 314
Dover, DE 19901

SCREENING REQUIREMENTS

Does the jurisdiction require screening of pregnant women for hepatitis B infection or hepatitis B surface antigen (HBsAg)?

No

Does the jurisdiction specifically require reporting of positive HBsAg status in pregnant women?

No

COMPLETION OF HEPATITIS B VACCINATION SERIES

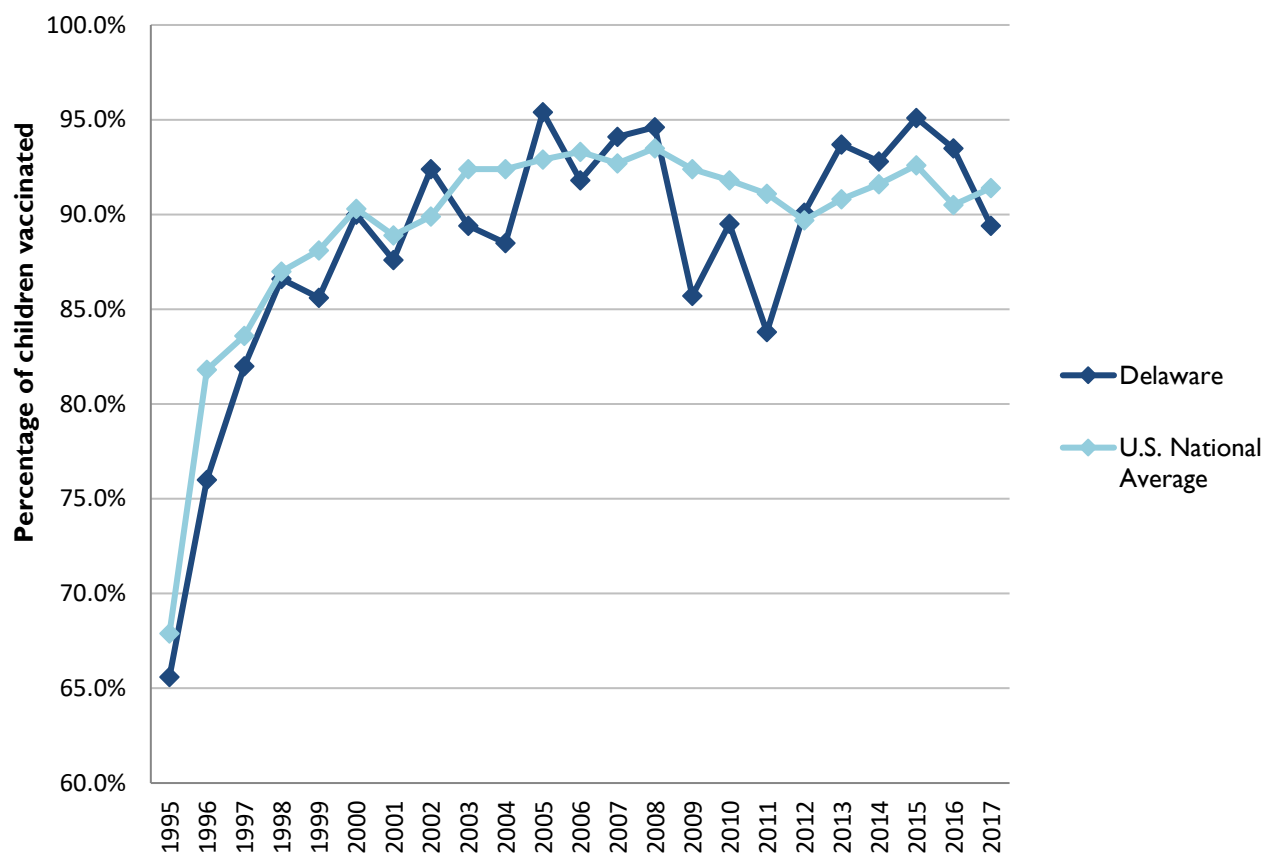
3 or more doses among children 19-35 months of age

	Percentage of children 19-35 months of age receiving 3 or more doses	Rank among other states	U.S. National Average	#1 ranked state and coverage
1995	76.7 ± 7.1%	8	67.9 ± 1.3%	88.5 ± 5.4% (South Carolina)
1996	84.8 ± 5.1%	18	81.8 ± 0.9%	95.8 ± 2.2% (South Carolina)
1997	82.7 ± 4.7%	33	83.6 ± 0.8%	91.6 ± 4.2% (New Jersey)
1998	83.5 ± 4.7%	42	87.0 ± 0.7%	94.1 ± 2.7% (South Carolina)
1999	87.7 ± 4.0%	32	88.1 ± 0.7%	94.0 ± 3.1% (Rhode Island)
2000	88.6 ± 4.1%	36	90.3 ± 0.6%	96.4 ± 1.9% (Rhode Island)
2001	89.9 ± 3.9%	19	88.9 ± 0.7%	95.8 ± 2.2% (Rhode Island)
2002	92.4 ± 4.1%	13	89.9 ± 0.7%	97.0 ± 2.0% (Rhode Island)
2003	90.3 ± 4.9%	37	92.4 ± 0.6%	98.2 ± 1.4% (Connecticut)
2004	94.7 ± 3.6%	12	92.4 ± 0.6%	96.8 ± 1.7% (Florida)
2005	91.2 ± 4.5%	36	92.9 ± 0.6%	97.9 ± 2.0% (Massachusetts)
2006	96.3 ± 2.6%	6	93.3 ± 0.6%	97.8 ± 1.6% (Rhode Island)
2007	95.7 ± 2.5%	9	92.7 ± 0.7%	98.6 ± 1.5% (New Hampshire)
2008	96.0 ± 2.7%	5	93.5 ± 0.7%	98.1 ± 1.6% (Connecticut)
2009	89.4 ± 4.8%	41	92.4 ± 0.7%	98.8 ± 1.5% (Rhode Island)
2010	89.5 ± 4.0%	42	91.8 ± 1.5%	98.3 ± 1.5% (North Dakota)
2011	83.8 ± 6.3%	50	91.1 ± 0.7%	97.1 ± 1.7% (Louisiana)
2012	90.1 ± 4.2%	27	89.7 ± 0.9%	96.3 ± 3.0% (Georgia)
2013	93.7 ± 3.1%	10	90.8 ± 1.0%	96.7 ± 2.3% (Rhode Island)
2014	91.8 ± 4.6%	30	91.6 ± 0.9%	97.6 ± 1.8% (Louisiana)
2015	95.1 ± 3.4%	9	92.6 ± 0.7%	97.3 ± 2.3% (Connecticut)
2016	93.5 ± 3.6%	19	90.5 ± 1.1%	97.4 ± 1.9% (Iowa)
2017	89.4 ± 4.9%	42	91.4 ± 0.9%	97.7 ± 1.6% (North Dakota)

Data compiled by the ALC from National Immunization Surveys, 1995-2017¹, <https://www.cdc.gov/vaccines/imz-managers/coverage/childvaxview/data-reports/hepb/index.html>

GRAPH:

Percentage of Children 19-35 Months of Age Receiving 3 or More Doses of Hepatitis B Vaccine



Data compiled by the ALC from National Immunization Surveys, 1995-2017¹,
<https://www.cdc.gov/vaccines/imz-managers/coverage/childvaxview/data-reports/hepb/index.html>

HEPATITIS B BIRTH DOSE VACCINATION COVERAGE

1 or more dose among infants within 3 days of birth

	Percentage of infants receiving			Rank among other states according to		
	1 dose within 1 day of birth*	1 dose within 2 days of birth	1 dose within 3 days of birth*	1 dose within 1 day of birth	1 dose within 2 days of birth	1 dose within 3 days of birth
2003		60.5 ± 6.8%		N/A	14	N/A
2004		58.3 ± 7.4%		N/A	24	N/A
2005		61.1 ± 8.6%		N/A	15	N/A
2006	55.1 ± 8.1%	61.2 ± 8.0%	61.8 ± 8.0%	16	18	20
2007	58.6 ± 7.2%	62.2 ± 7.1%	62.7 ± 7.1%	16	20	23
2008	50.2 ± 7.1%	58.2 ± 7.2%	58.6 ± 7.2%	26	32	33
2009	58.5 ± 7.4%	62.1 ± 7.4%	62.8 ± 7.4%	21	25	30
2010	60.4 ± 6.1%	67.5 ± 5.8%	69.3 ± 5.7%	22	19	20
2011	58.1 ± 7.0%	67.0 ± 6.8%	68.4 ± 6.7%	33	34	37
2012	66.7 ± 7.0%	70.8 ± 6.8%	72.3 ± 6.7%	12	26	29
2013	73.7 ± 6.4%	82.1 ± 5.4%	83.6 ± 5.3%	12	3	2
2014	66.7 ± 7.0%	70.8 ± 6.8%	72.3 ± 6.7%	22	26	29
2015	62.7 ± 7.7%	70.5 ± 7.4%	76.0 ± 6.7%	33	29	20
2016	65.0 ± 7.9%	70.9 ± 7.5%	72.5 ± 7.3%	24	26	30
2017	66.8 ± 7.1%	71.4 ± 6.8%	72.9 ± 6.8%	30	36	32

*No data available 2003-2005

2017 U.S. NATIONAL AVERAGE

Day 1: 65.7 ± 1.6%
Day 2: 72.0 ± 1.6%
Day 3: 73.6 ± 1.6%

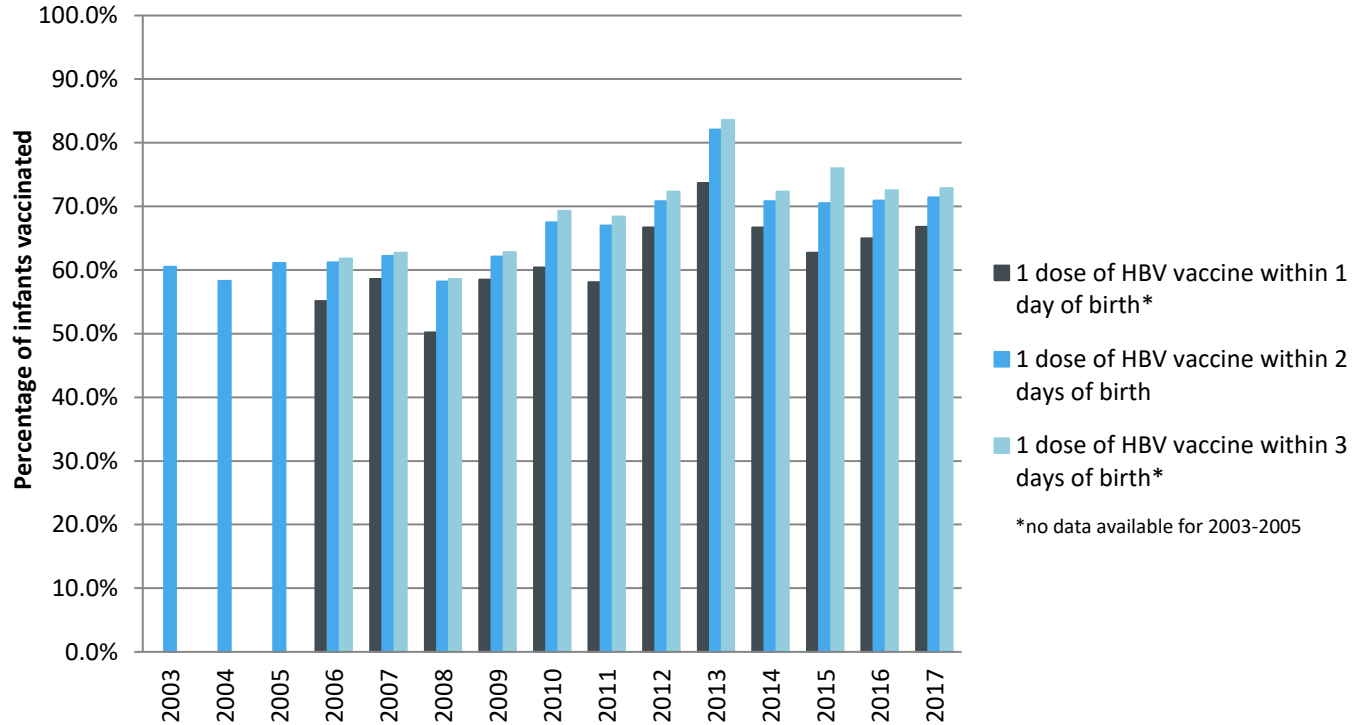
2017 HIGHEST BIRTH DOSE COVERAGE

Day 1: 82.0 ± 5.7% (Kentucky)
Day 2: 84.1 ± 5.6% (Kentucky)
Day 3: 84.1 ± 5.6% (Kentucky)

Data compiled by the ALC from National Immunization Surveys, 1995-2017¹,
<https://www.cdc.gov/vaccines/imz-managers/coverage/childvaxview/data-reports/hepb/index.html>

GRAPH:

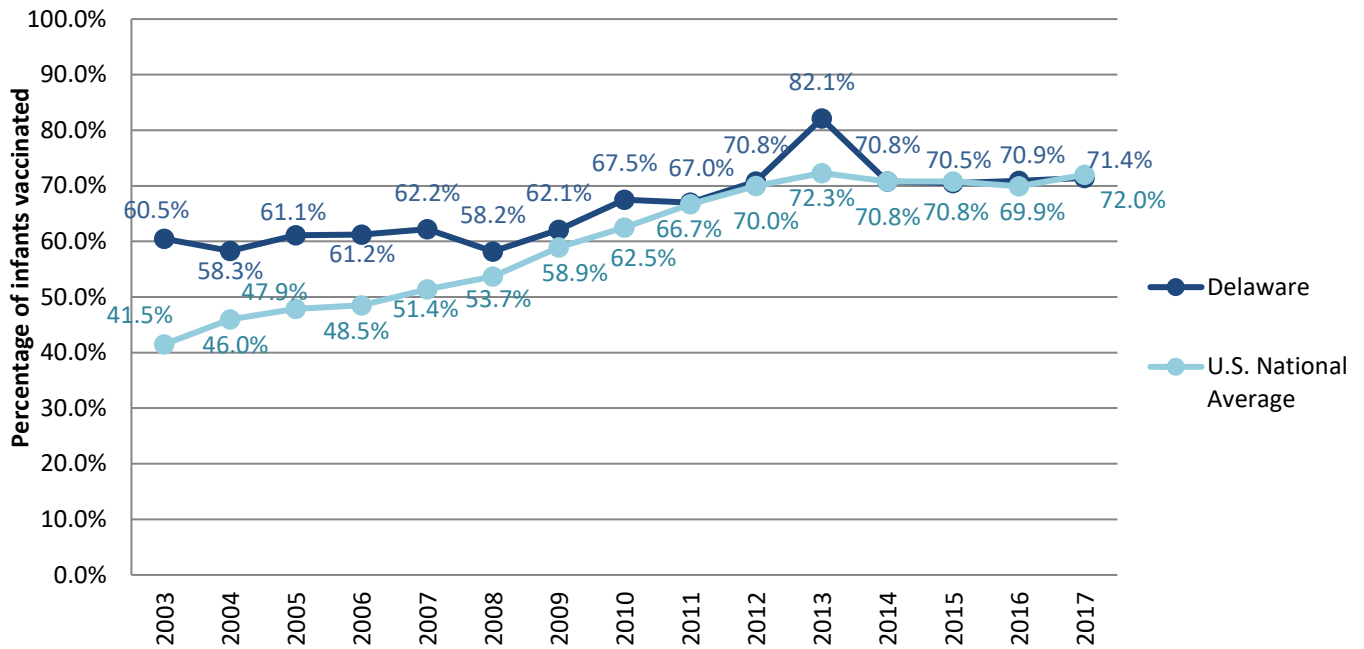
Estimated Vaccination Coverage for Hepatitis B Vaccine among Children from Birth to 3 Days of Age in Delaware



Data compiled by the ALC from National Immunization Surveys, 1995-2017¹,
<https://www.cdc.gov/vaccines/imz-managers/coverage/childvaxview/data-reports/hepb/index.html>

GRAPH:

Percentage of Infants Receiving 1 Dose of Hepatitis B Vaccine within 2 Days of Birth



Data compiled by the ALC from National Immunization Surveys, 1995-2017¹, <https://www.cdc.gov/vaccines/imz-managers/coverage/childvaxview/data-reports/hepb/index.html>

¹ The data from the National Immunization Surveys constitute a composite of data from children who were 19-35 months of age at the time of the survey. Therefore, the data might reflect a different estimate from the states' own birth cohort data.